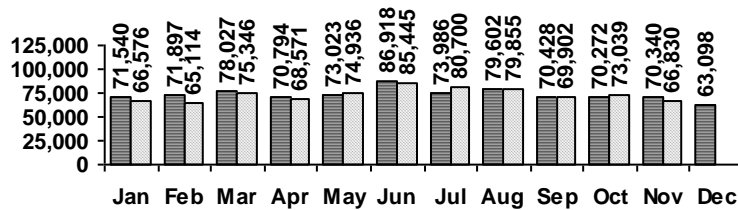


Logan Library Monthly Report November 2017

CIRCULATION

Total Circulation

■ 2016 □ 2017



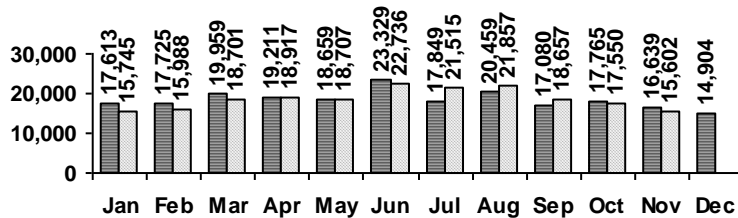
Average Physical Circulation: 2,891
Highest day: 3,833 on Mon, Nov 13

Physical Circulation: 60,721
Online Circulation: 6,109

VISITS

Patron Exit Count

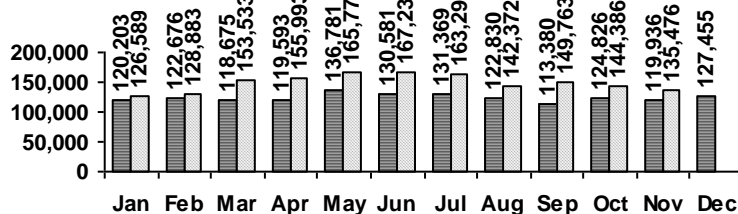
■ 2016 □ 2017



Average visits per day: 742.95
Physical circulations per visit: 3.9
Total library card holders: 24,523
New cards this month: 189

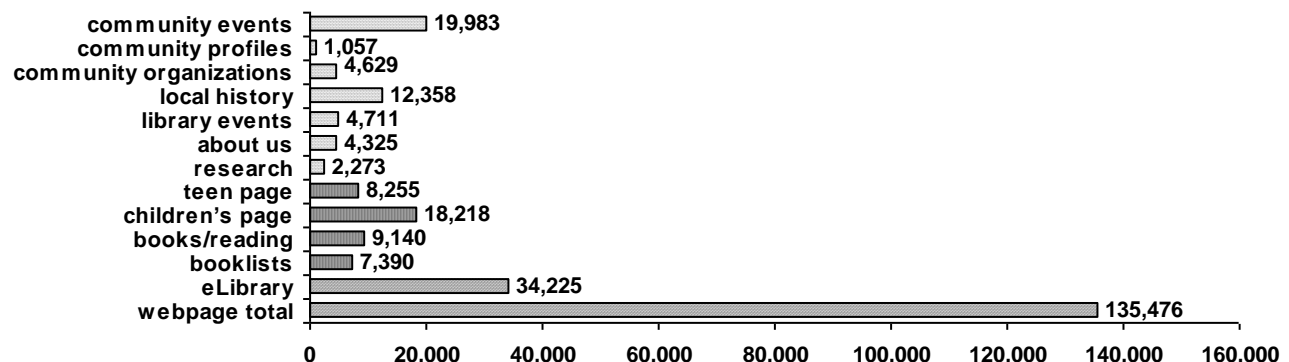
Online Visits

■ 2016 □ 2017



Average online visits per day: 4,515
Average visit length: 10:34

Webpage Visits



PROGRAMS

	events	attendance
Preschool Storytime	13	357
Toddler Storytime	8	211
Spanish Storytime	7	131
After School Programs	4	102

	events	attendance
Teen Tuesdays	4	50
Movie Nights	4	98
Other Programs and Events	9	310
Book A Librarian requests		0

HOLDINGS

	Fiction	Nonfiction	Audiovisual	eResources	Total
Donations	5	0	0	0	5
Purchases	443	172	317	0	932
Withdrawals	497	120	162	0	779

Items in collection: 246,338
 Titles in collection: 198,588
 eResources in collection: 41,545

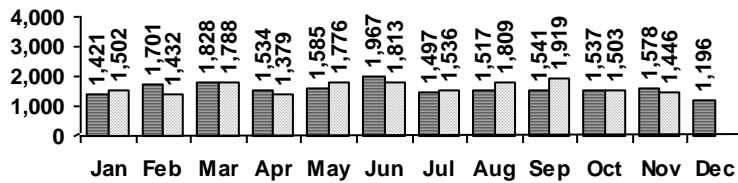
SERVICES

Scheduled Meeting Room Usage

Current Month: 81 groups, 124 meetings
 Year to Date: 883 groups, 1,393 meetings

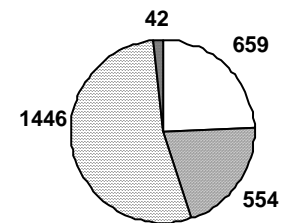
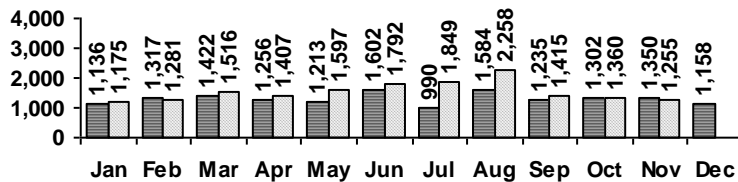
Reference Transactions

■ 2016 □ 2017



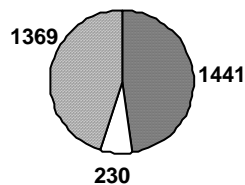
Other Service Transactions

■ 2016 □ 2017



□ computer/printing □ directional/policy
 □ reference □ other

Computer Sessions



■ children □ teen ■ adult

■ 2016 □ 2017

