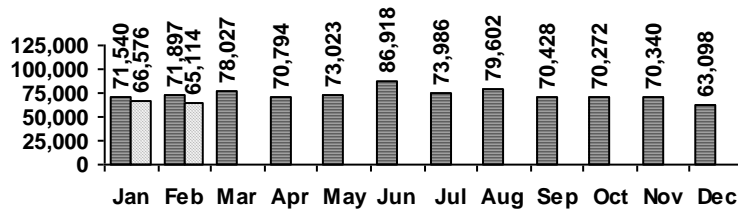


Logan Library Monthly Report February 2017

CIRCULATION

Total Circulation

■ 2016 □ 2017



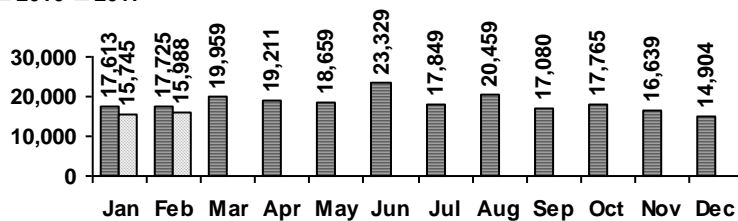
Average Physical Circulation: 2,591
Highest day: 3,288 on Tue, Feb 21

Physical Circulation: 59,592
Online Circulation: 5,522

VISITS

Patron Exit Count

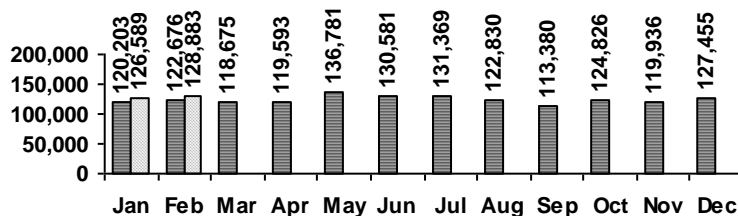
■ 2016 □ 2017



Average visits per day: 695.13
Physical circulations per visit: 3.7
Total library card holders: 24,138
New cards this month: 251

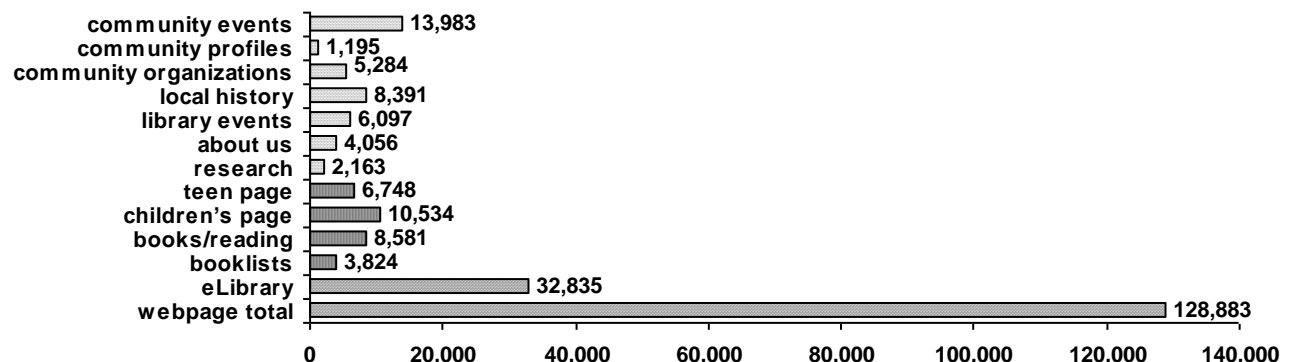
Online Visits

■ 2016 □ 2017



Average online visits per day: 4,601
Average visit length: 6:29

Webpage Visits



PROGRAMS

	events	attendance
Preschool Storytime	8	185
Toddler Storytime	6	126
Spanish Storytime	8	116
After School Programs	7	292

	events	attendance
Teen Tuesdays	4	38
Movie Nights	3	78
Other Programs and Events	10	474
Book A Librarian requests	6	

HOLDINGS

	Fiction	Nonfiction	Audiovisual	E-Resources	Total
Donations	7	1	1	444	453
Purchases	574	184	239	111	1,108
Withdrawals	1,081	134	301	0	1,516

Items in collection: 243,157
Titles in collection: 196,598

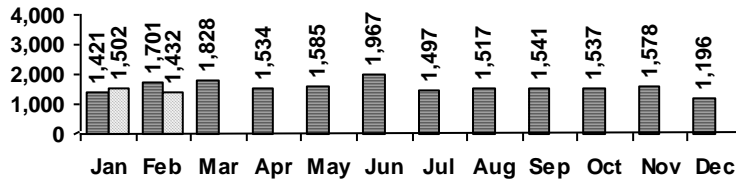
SERVICES

Scheduled Meeting Room Usage

Current Month: 86 groups, 129 meetings
Year to Date: 181 groups, 268 meetings

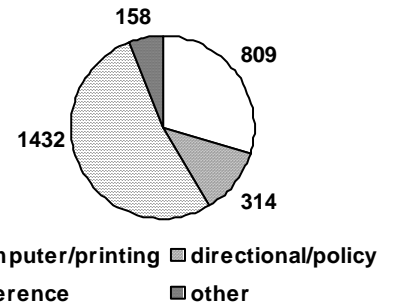
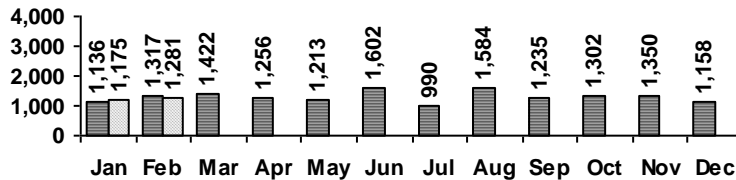
Reference Transactions

■ 2016 □ 2017

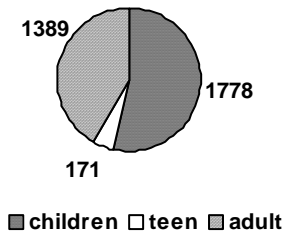


Other Service Transactions

■ 2016 □ 2017



Computer Sessions



■ 2016 □ 2017

