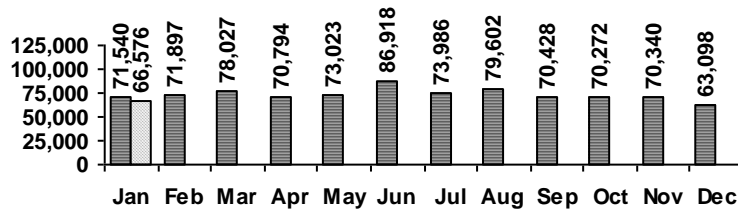


## Logan Library Monthly Report January 2017

### CIRCULATION

#### Total Circulation

■ 2016 □ 2017



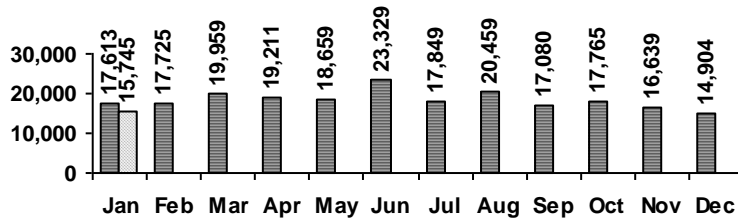
Average Physical Circulation: 2,631  
Highest day: 3,839 on Tue, Jan 17

Physical Circulation: 60,519  
Online Circulation: 6,057

### VISITS

#### Patron Exit Count

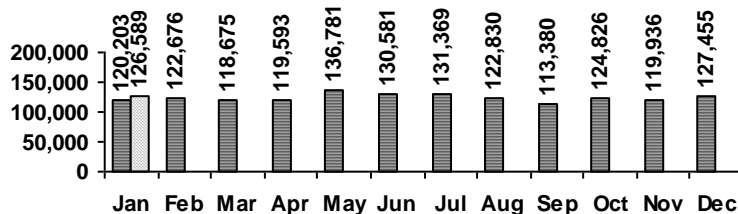
■ 2016 □ 2017



Average visits per day: 684.57  
Physical circulations per visit: 3.8  
Total library card holders: 23,896  
New cards this month: 265

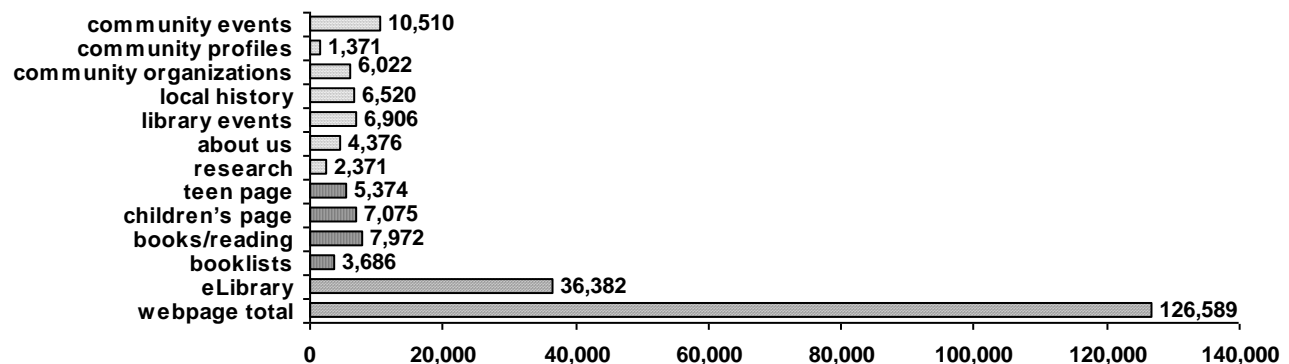
#### Online Visits

■ 2016 □ 2017



Average online visits per day: 4,083  
Average visit length: 6:19

#### Webpage Visits



## PROGRAMS

	events	attendance
Preschool Storytime	19	396
Toddler Storytime	10	204
Spanish Storytime	9	124
After School Programs	5	111

	events	attendance
Teen Tuesdays	5	41
Movie Nights	3	69
Other Programs and Events	11	321
Book A Librarian requests		1

## HOLDINGS

	Fiction	Nonfiction	Audiovisual	E-Resources	Total
Donations	20	8	3	0	31
Purchases	238	86	337	0	661
Withdrawals	1,005	214	136	0	1,355

Items in collection: 243,491  
Titles in collection: 196,466

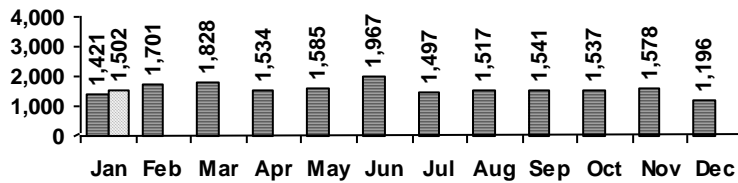
## SERVICES

### Scheduled Meeting Room Usage

Current Month: 95 groups, 139 meetings  
Year to Date: 95 groups, 139 meetings

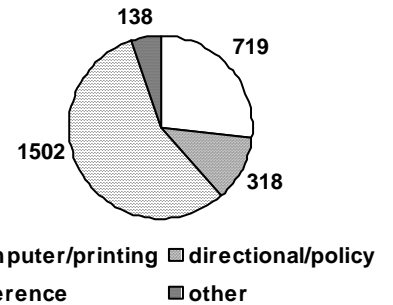
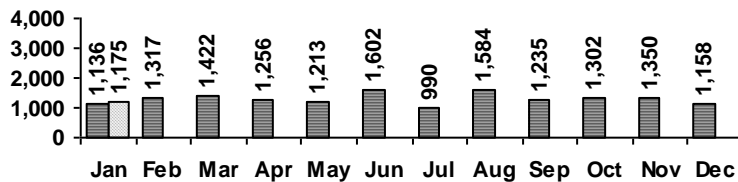
### Reference Transactions

■ 2016 □ 2017

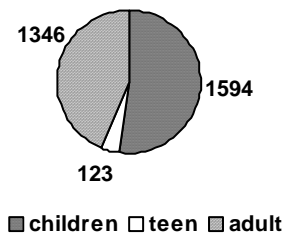


### Other Service Transactions

■ 2016 □ 2017



### Computer Sessions



■ 2016 □ 2017

