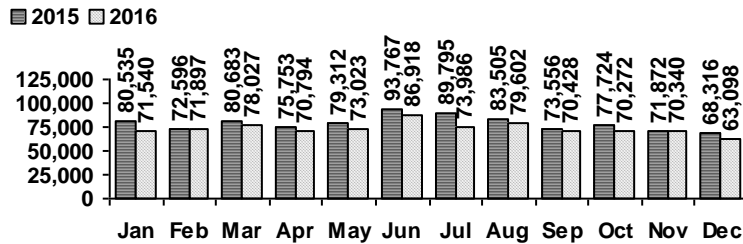


Logan Library Monthly Report December 2016

CIRCULATION

Total Circulation

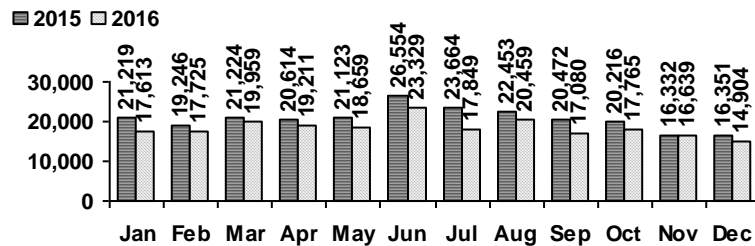


Average Physical Circulation: 2,319
Highest day: 3,049 on Tue, Dec 27

Physical Circulation: 57,971
Online Circulation: 5,127

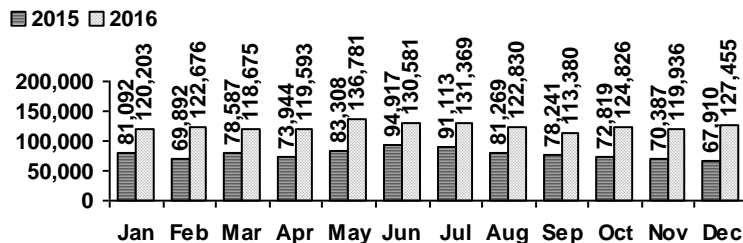
VISITS

Patron Exit Count



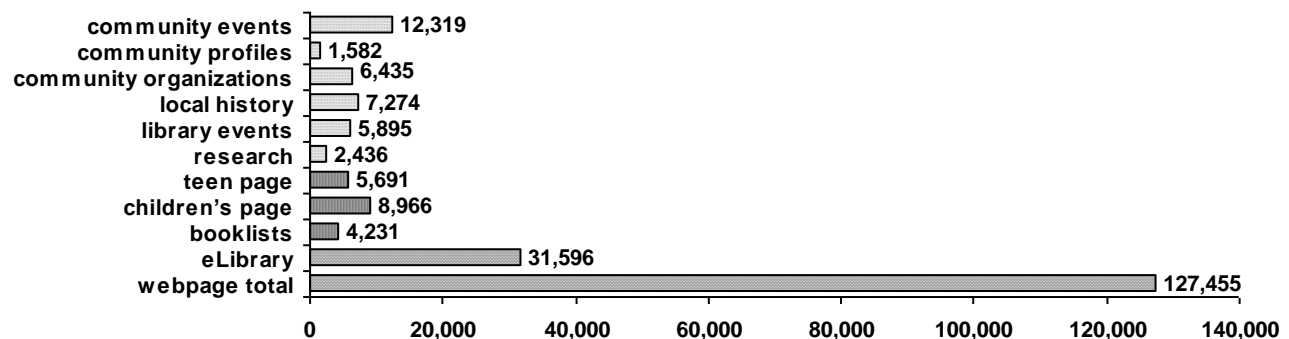
Average visits per day: 596.16
Physical circulations per visit: 3.9
Total library card holders: 23,837
New cards this month: 171

Online Visits



Average online visits per day: 4,111
Average visit length: 4:38

Webpage Visits



PROGRAMS

	events	attendance
Preschool Storytime	0	0
Toddler Storytime	0	0
Spanish Storytime	2	34
After School Programs	4	114

	events	attendance
Teen Tuesdays	4	38
Movie Nights	3	103
Other Programs and Events	13	553
Book A Librarian requests	5	

HOLDINGS

	Fiction	Nonfiction	Audiovisual	E-Resources	Total
Donations	20	8	3	0	31
Purchases	647	86	337	0	1,070
Withdrawals	1,134	741	281	0	2,156

Items in collection: 245,439

Titles in collection: 197,441

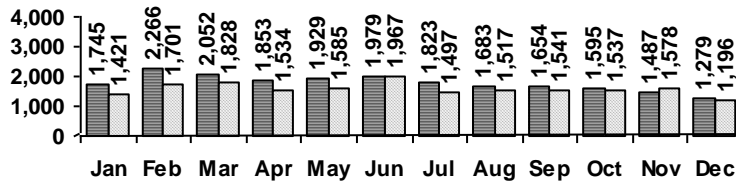
SERVICES

Scheduled Meeting Room Usage

Current Month: 58 groups, 97 meetings
 Year to Date: 826 groups, 1,390 meetings

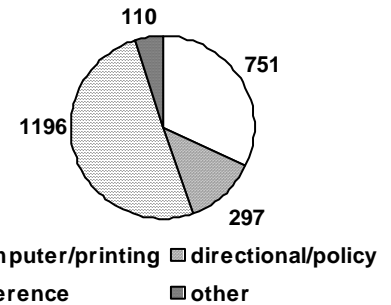
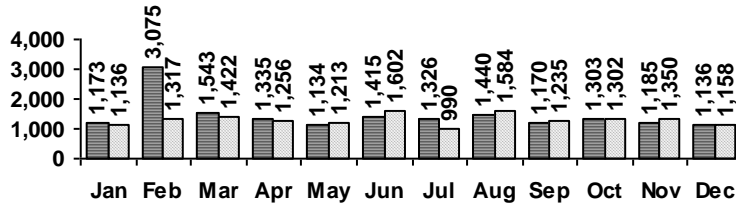
Reference Transactions

■ 2015 □ 2016

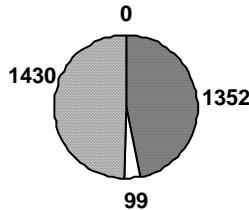


Other Service Transactions

■ 2015 □ 2016

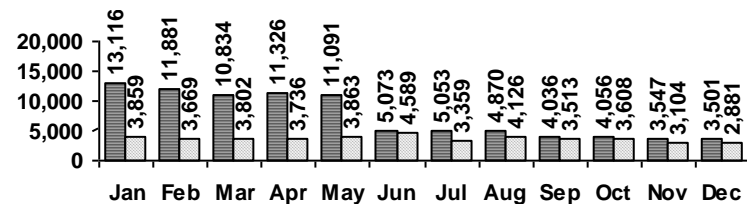


Computer Sessions



■ children □ teen ■ adult □ wifi

■ 2015 □ 2016



(WiFi usage data unavailable beginning June 2015)