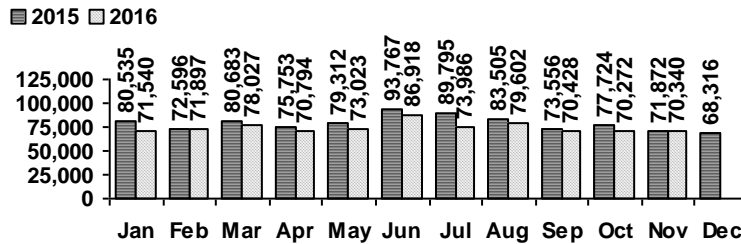


Logan Library Monthly Report November 2016

CIRCULATION

Total Circulation

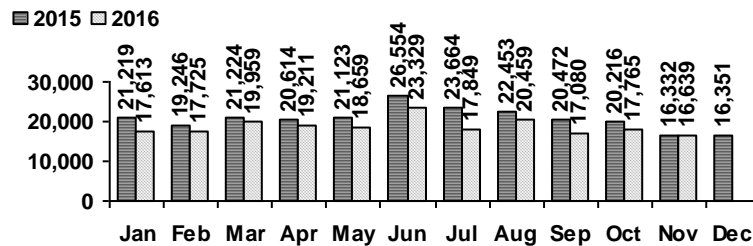


Average Physical Circulation: 2,844
Highest day: 3,333 on Mon, Nov 28

Physical Circulation: 65,406
Online Circulation: 4,934

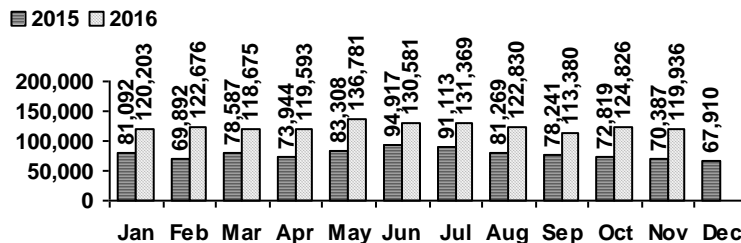
VISITS

Patron Exit Count



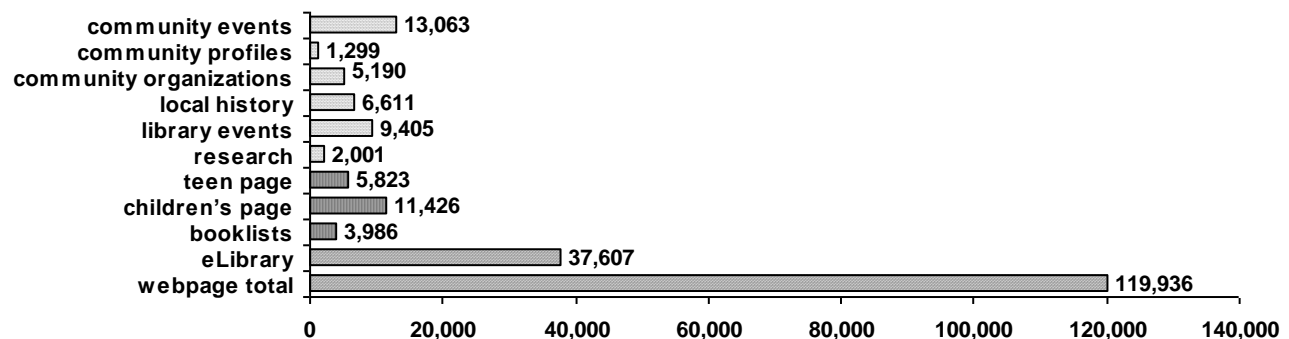
Average visits per day: 723.43
Physical circulations per visit: 3.9
Total library card holders: 24,435
New cards this month: 209

Online Visits



Average online visits per day: 3,997
Average visit length: 7:00

Webpage Visits



PROGRAMS

	events	attendance
Preschool Storytime	15	323
Toddler Storytime	9	189
Spanish Storytime	8	150
After School Programs	4	120

	events	attendance
Teen Tuesdays	5	59
Movie Nights	4	93
Other Programs and Events	13	304
Book A Librarian requests	0	

HOLDINGS

	Fiction	Nonfiction	Audiovisual	E-Resources	Total
Donations	19	8	4	16,207	16,238
Purchases	571	307	279	0	1,157
Withdrawals	357	40	142	0	539

Items in collection: 244,216

Titles in collection: 196,777

(e-resources added: 12596 e-books, 3490 e-audio, 121 e-video)

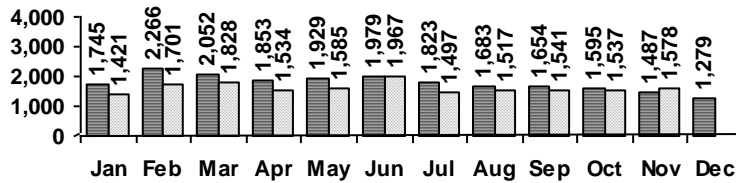
SERVICES

Scheduled Meeting Room Usage

Current Month: 75 groups, 119 meetings
 Year to Date: 768 groups, 1,293 meetings

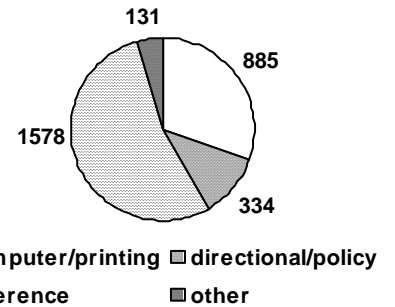
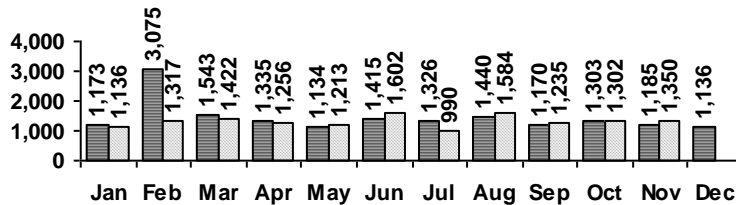
Reference Transactions

■ 2015 □ 2016

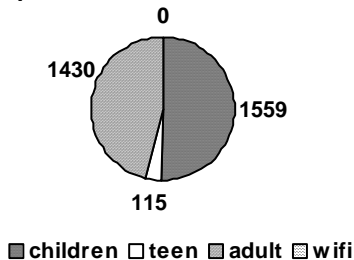


Other Service Transactions

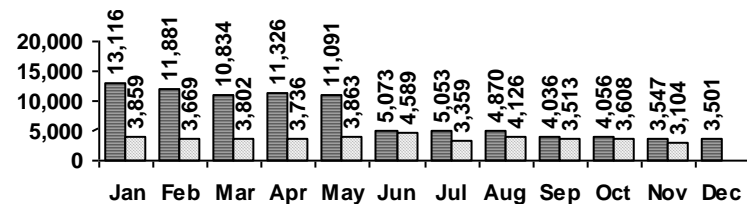
■ 2015 □ 2016



Computer Sessions



■ 2015 □ 2016



(WiFi usage data unavailable beginning June 2015)