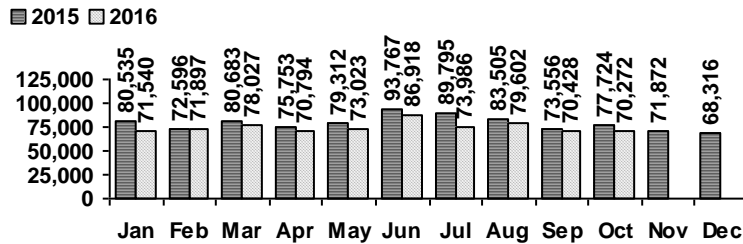


Logan Library Monthly Report October 2016

CIRCULATION

Total Circulation

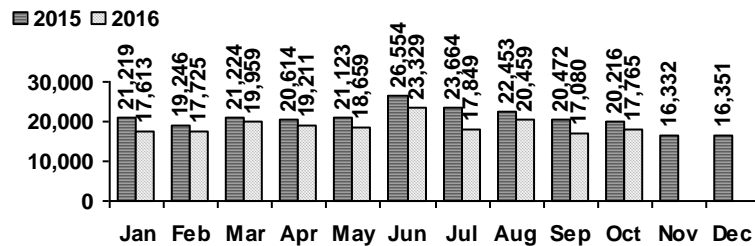


Average Physical Circulation: 2,612
Highest day: 4,030 on Tue, Oct 11

Physical Circulation: 65,300
Online Circulation: 4,972

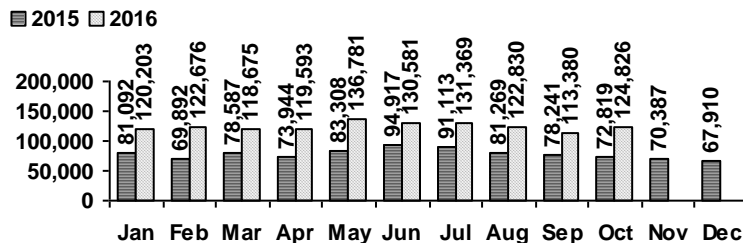
VISITS

Patron Exit Count



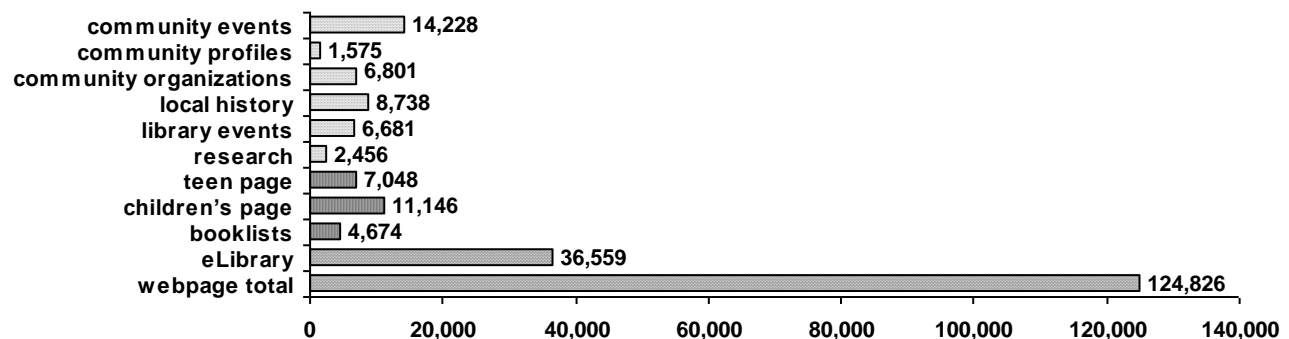
Average visits per day: 710.60
Physical circulations per visit: 3.7
Total library card holders: 24,232
New cards this month: 298

Online Visits



Average online visits per day: 4,026
Average visit length: 7:14

Webpage Visits



PROGRAMS

	events	attendance
Preschool Storytime	15	323
Toddler Storytime	9	223
Spanish Storytime	7	102
After School Programs	5	106

	events	attendance
Teen Tuesdays	4	39
Movie Nights	3	74
Other Programs and Events	12	1,865
Book A Librarian requests	1	

HOLDINGS

	Fiction	Nonfiction	Audiovisual	E-Resources	Total
Donations	95	25	3	0	123
Purchases	750	380	380	0	1,510
Withdrawals	597	20	149	0	766

Items in collection: 227,595
Titles in collection: 180,144

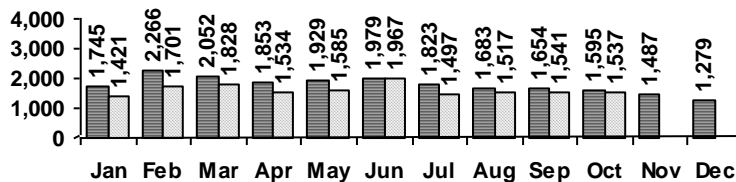
SERVICES

Scheduled Meeting Room Usage

Current Month: 84 groups, 127 meetings
Year to Date: 693 groups, 1,174 meetings

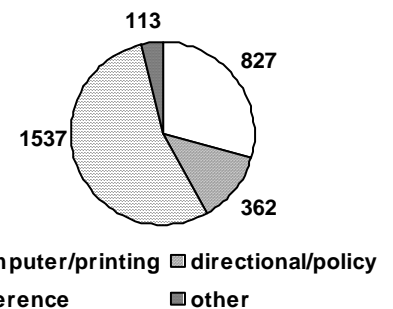
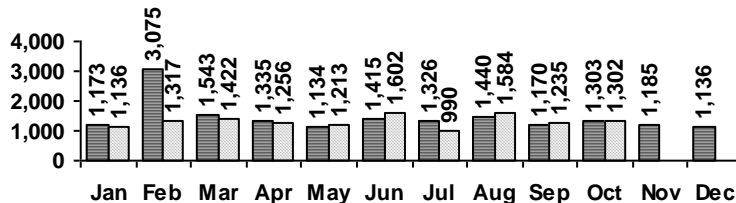
Reference Transactions

■ 2015 □ 2016

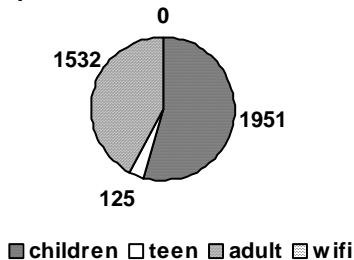


Other Service Transactions

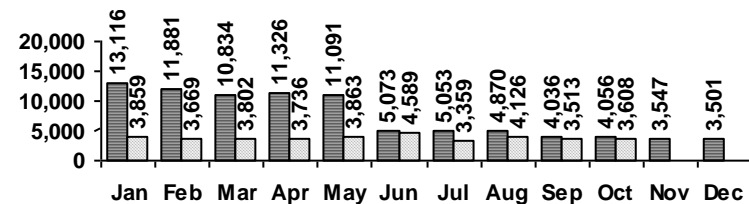
■ 2015 □ 2016



Computer Sessions



■ 2015 □ 2016



(WiFi usage data unavailable beginning June 2015)