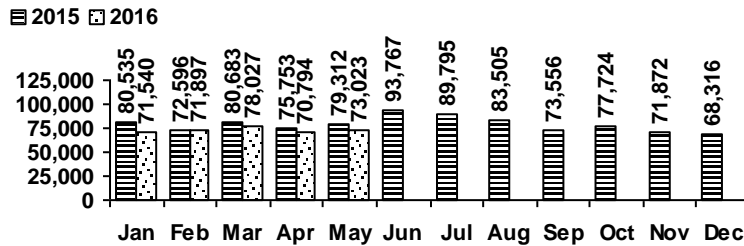


## Logan Library Monthly Report May 2016

### CIRCULATION

#### Total Circulation

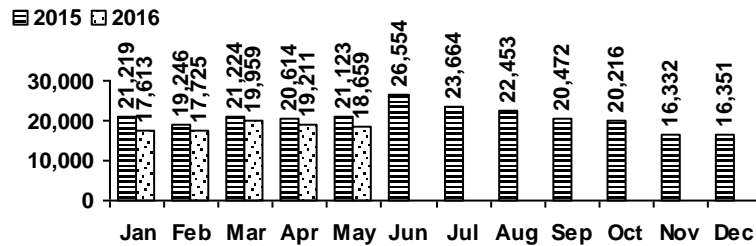


Average Physical Circulation: 2,756  
Highest day: 4,661 on Tue, May 31

Physical Circulation: 68,888  
Online Circulation: 4,135

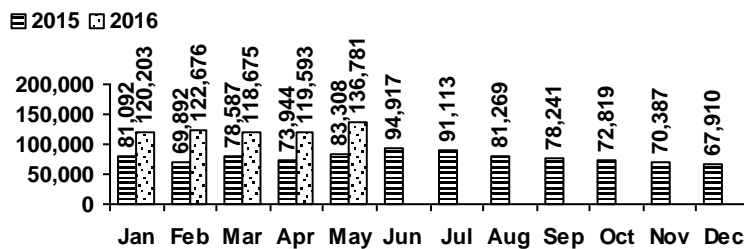
### VISITS

#### Patron Exit Count



Average visits per day: 746.36  
Physical circulations per visit: 3.7  
Total library card holders: 24,055  
New cards this month: 356

#### Online Visits



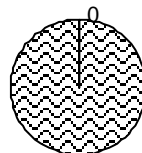
Average online visits per day: 57,396  
Average visit length: 5:48

### HOLDINGS

	Donations	Purchases	Withdrawals
Fiction	1	716	1,244
Nonfiction	65	245	204
Audiovisual	6	189	216
E-Resources	289	58	2
<b>Total</b>	<b>361</b>	<b>1,208</b>	<b>1,666</b>

#### New E-Resources

ebook  evideo  eaudio



347

Items in collection: 227,433  
Titles in collection: 179,493

## PROGRAMS

	events	attendance
Preschool Storytime	15	315
Toddler Storytime	9	195
Spanish Storytime	5	79
After School Programs	5	143

	events	attendance
Teen Tuesdays	5	70
Movie Nights	4	109
Learning @ the Library	0	0
Other Programs and Events	20	892

## SERVICES

Scheduled Meeting Room Usage (this month / year to date)

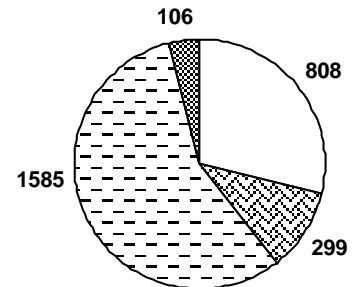
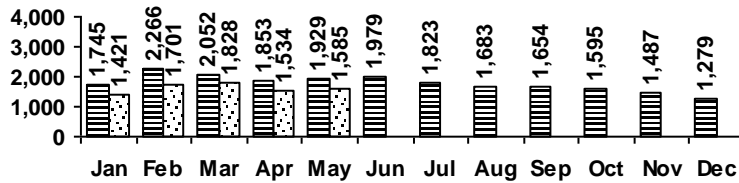
	groups	meetings
Lake Bonneville Room	18 / 94	30 / 158
Jim Bridger Room	18 / 92	29 / 142
Logan History Room	7 / 36	8 / 41

	groups	meetings
Old Ephraim Room	11 / 52	15 / 89
Old Juniper Room	10 / 38	12 / 50
Temple Fork Room	6 / 42	18 / 89

**Total Groups: 70 / 354 Total Meetings: 112 / 569**

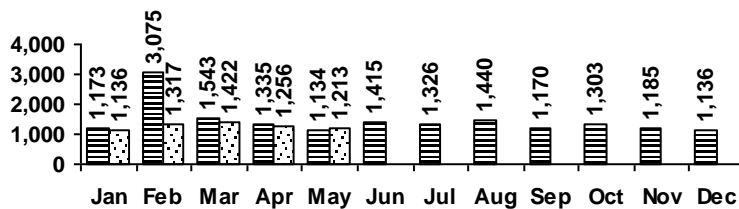
### Reference Transactions

2015 2016



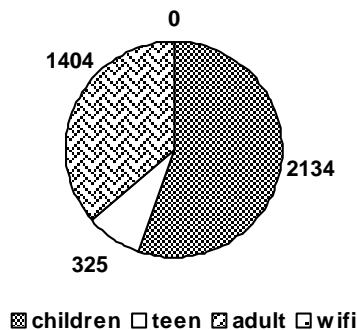
### Other Service Transactions

2015 2016



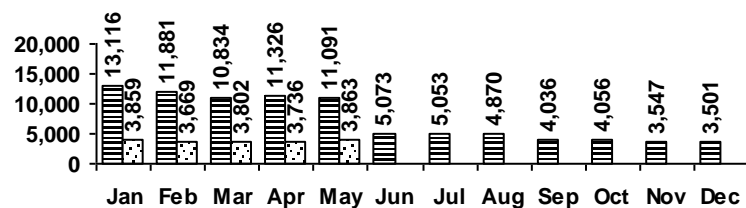
computer/printing directional/policy  
reference other

### Computer Sessions



children teen adult wifi

2015 2016



(WiFi usage data temporarily unavailable beginning June 2015)