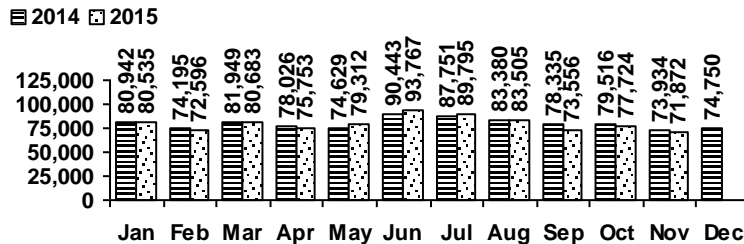


## Logan Library Monthly Report November 2015

### CIRCULATION

#### Total Circulation

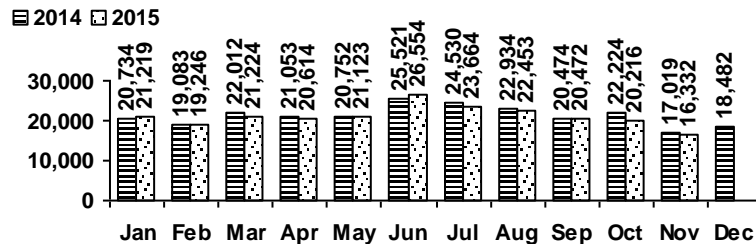


Average Physical Circulation: 3,115  
Highest day: 4,086 on Mon, Nov 30

Physical Circulation: 68,534  
Online Circulation: 3,338

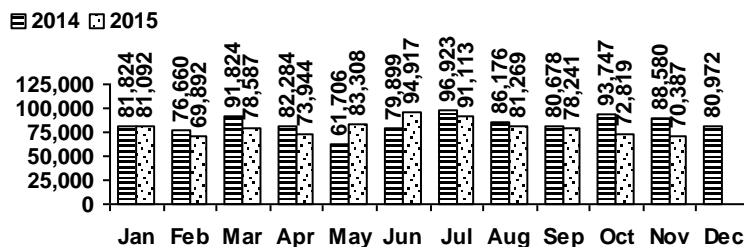
### VISITS

#### Patron Exit Count



Average visits per day: 742.36  
Physical circulations per visit: 4.2  
Total library card holders: 24,549  
New cards this month: 217

#### Online Visits



Average online visits per day: 2,346  
Average visit length: 13:06

### HOLDINGS

	Donations	Purchases	Withdrawals
Fiction	16	411	766
Nonfiction	1	270	1,197
Audiovisual	8	294	1,231
E-Resources	0	0	0
<b>Total</b>	<b>25</b>	<b>975</b>	<b>3,194</b>

**(No New E-Resources  
downloaded this month)**

Items in collection: 224,938  
Titles in collection: 176,006

## PROGRAMS

	events	attendance
Preschool Storytime	15	216
Toddler Storytime	6	157
Spanish Storytime	2	43
After School Programs	4	108

	events	attendance
Teen Tuesdays	4	52
Movie Nights	5	171
Learning @ the Library	6	8
Other Programs and Events	8	160

## SERVICES

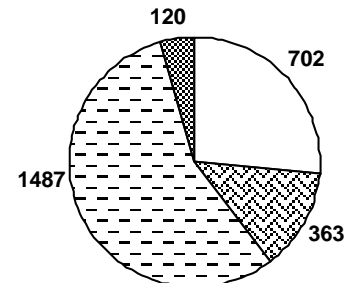
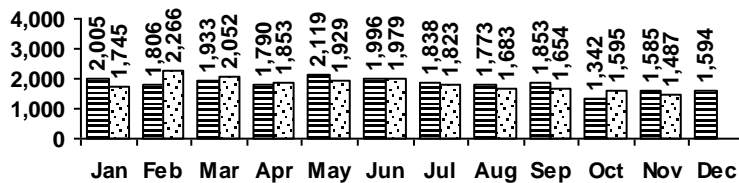
Scheduled Meeting Room Usage (this month / year to date)

	groups	meetings		groups	meetings
Lake Bonneville Room	16 / 231	22 / 368	Old Ephraim Room	10 / 132	17 / 262
Jim Bridger Room	18 / 196	29 / 327	Old Juniper Room	4 / 91	14 / 233
Logan History Room	8 / 68	9 / 82	Temple Fork Room	7 / 108	17 / 343

**Total Groups: 63 / 826 Total Meetings: 108 / 1615**

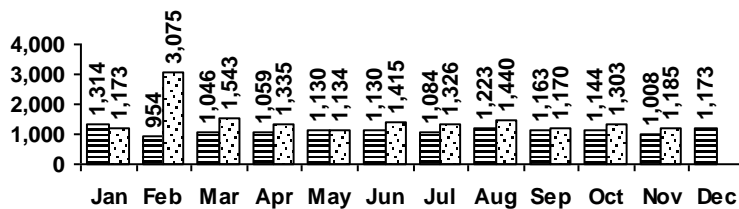
### Reference Transactions

2014 2015



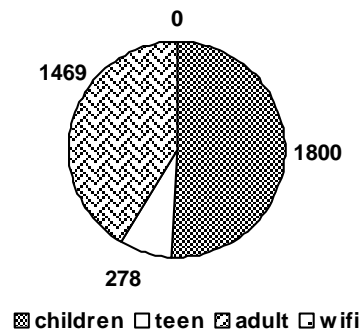
### Other Service Transactions

2014 2015

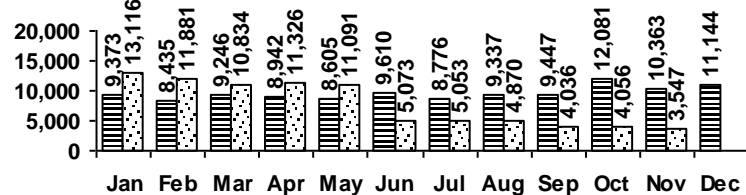


computer/printing directional/policy  
reference other

### Computer Sessions



2014 2015



(WiFi usage data temporarily unavailable beginning June 2015)