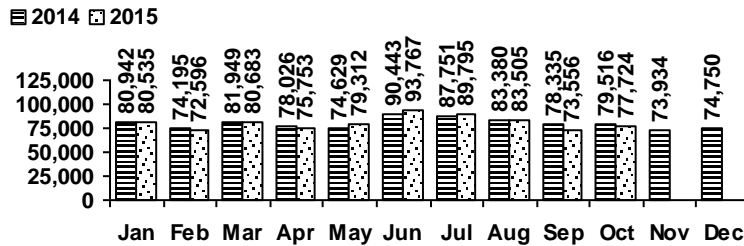


## Logan Library Monthly Report October 2015

### CIRCULATION

#### Total Circulation

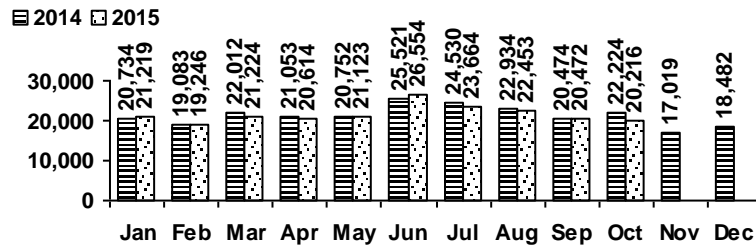


Average Physical Circulation: 2,859  
Highest day: 4,818 on Tue, Oct 13

Physical Circulation: 74,334  
Online Circulation: 3,390

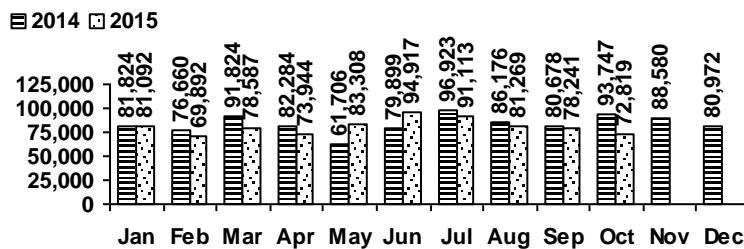
### VISITS

#### Patron Exit Count



Average visits per day: 777.54  
Physical circulations per visit: 3.7  
Total library card holders: 24,339  
New cards this month: 252

#### Online Visits



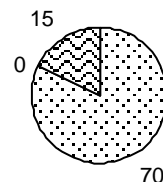
Average online visits per day: 2,349  
Average visit length: 13:06

### HOLDINGS

	Donations	Purchases	Withdrawals
Fiction	19	977	800
Nonfiction	17	325	1,047
Audiovisual	11	222	226
E-Resources	0	85	0
<b>Total</b>	<b>47</b>	<b>1,609</b>	<b>2,073</b>

#### New E-Resources

Legend:  ebook  evideo  eaudio



Items in collection: 227,491  
Titles in collection: 177,670

## PROGRAMS

	events	attendance
Preschool Storytime	16	379
Toddler Storytime	10	317
Spanish Storytime	4	79
After School Programs	6	203

	events	attendance
Teen Tuesdays	4	48
Movie Nights	3	55
Learning @ the Library	6	5
Other Programs and Events	13	4,725

## SERVICES

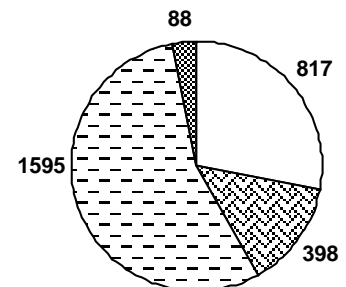
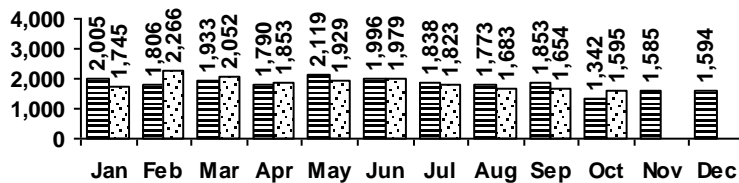
Scheduled Meeting Room Usage (this month / year to date)

	groups	meetings		groups	meetings
Lake Bonneville Room	23 / 215	35 / 346	Old Ephraim Room	16 / 122	24 / 245
Jim Bridger Room	22 / 178	36 / 298	Old Juniper Room	7 / 87	19 / 219
Logan History Room	6 / 60	7 / 73	Temple Fork Room	9 / 101	25 / 326

**Total Groups: 83 / 763    Total Meetings: 146 / 1507**

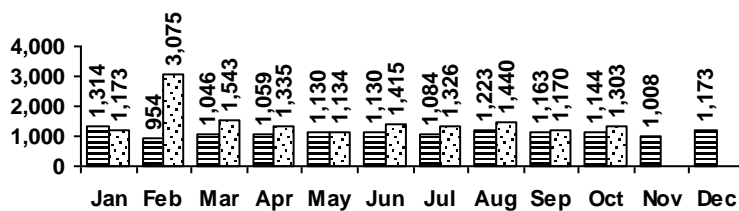
### Reference Transactions

2014 2015



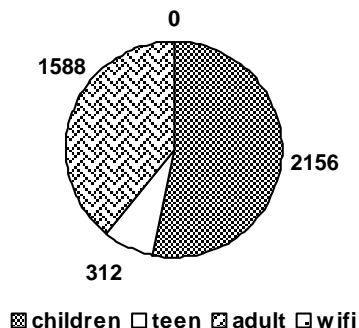
### Other Service Transactions

2014 2015

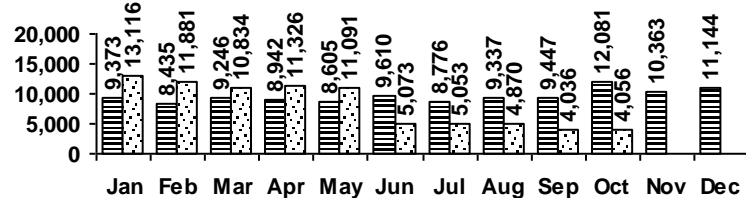


computer/printing    directional/policy  
reference    other

### Computer Sessions



2014 2015



(WiFi usage data temporarily unavailable beginning June 2015)