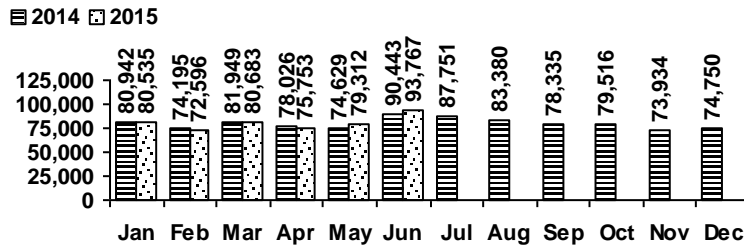


## Logan Library Monthly Report June 2015

### CIRCULATION

#### Total Circulation

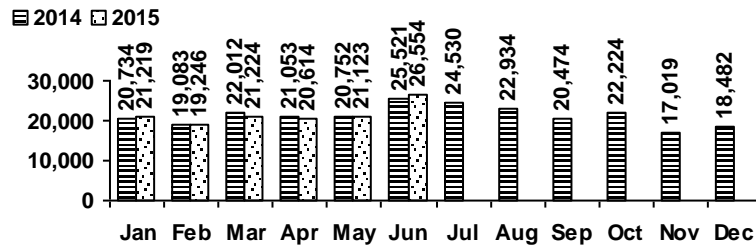


Average Physical Circulation: 3,479  
Highest day: 4,807 on Mon, Jun 15

Physical Circulation: 90,449  
Online Circulation: 3,318

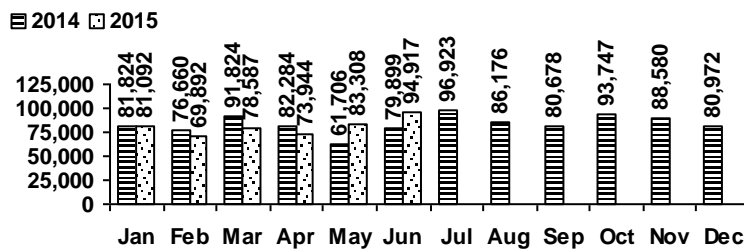
### VISITS

#### Patron Exit Count



Average visits per day: 1,021.31  
Physical circulations per visit: 3.4  
Total library card holders: 25,802  
New cards this month: 477

#### Online Visits



Average online visits per day: 3,163  
Average visit length: 10:40

### HOLDINGS

	Donations	Purchases	Withdrawals
Fiction	7	491	498
Nonfiction	75	169	244
Audiovisual	7	165	172
E-Resources	0	0	0
<b>Total</b>	<b>89</b>	<b>825</b>	<b>914</b>

**(No New E-Resources  
downloaded this month)**

Items in collection: 223,415  
Titles in collection: 172,578

## PROGRAMS

	events	attendance
Teen Tuesdays	5	70
Movie Nights	5	229
Learning @ the Library	11	29
Other Programs and Events	8	297

	events	attendance
Spanish Storytime	4	165
Summer Storytime	9	761
Children's Activities	8	595

**Summer Reading Program Participation:**  
 children - 1247, teen - 338, adult - 113

## SERVICES

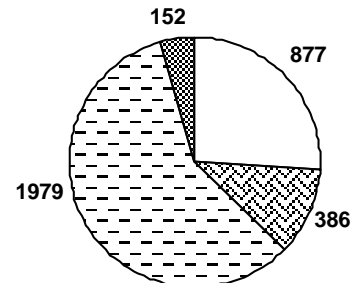
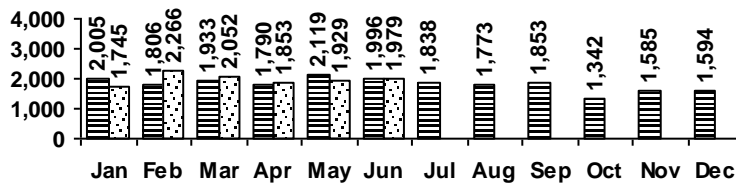
Scheduled Meeting Room Usage (this month / year to date)

	groups	meetings		groups	meetings
Lake Bonneville Room	17 / 135	31 / 212	Old Ephraim Room	11 / 74	23 / 156
Jim Bridger Room	16 / 108	40 / 172	Old Juniper Room	8 / 52	25 / 137
Logan History Room	4 / 38	5 / 46	Temple Fork Room	11 / 68	36 / 209

**Total Groups: 67 / 475 Total Meetings: 160 / 932**

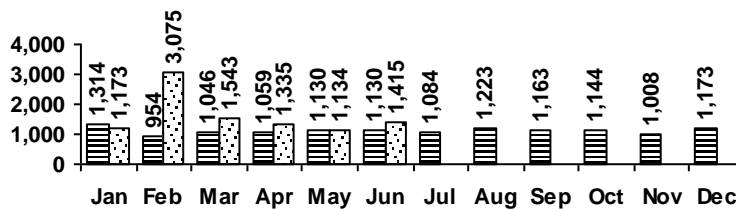
### Reference Transactions

2014 2015



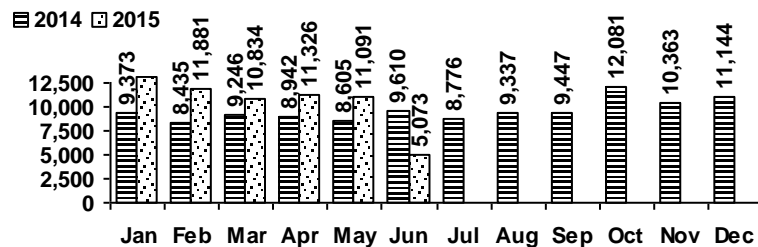
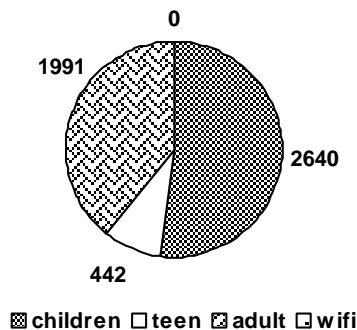
### Other Transactions

2014 2015



computer/printing directional/policy  
 reference other

### Computer Sessions



(WiFi usage data temporarily unavailable beginning June 2015)