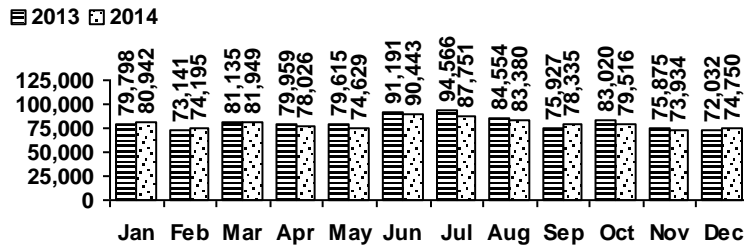


Logan Library Monthly Report December 2014

CIRCULATION

Total Circulation

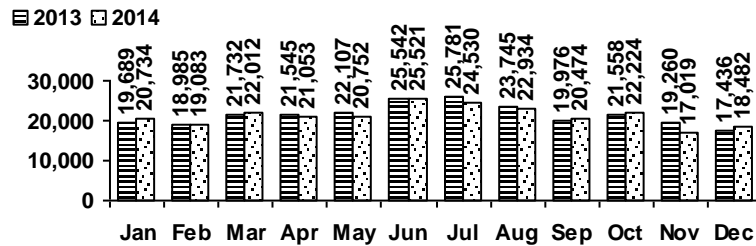


Average Physical Circulation: 2,774
Highest day: 3,661 on Mon, Dec 29

Physical Circulation: 72,125
Online Circulation: 2,625

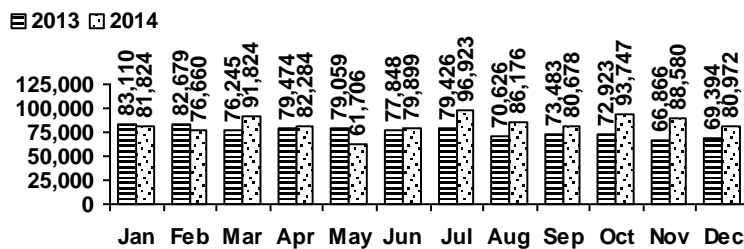
VISITS

Patron Exit Count



Average visits per day: 710.85
Physical circulations per visit: 3.9
Library card holders: 24,891

Online Visits



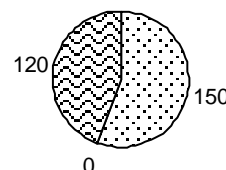
Average online visits per day: 2,612
Average visit length: 15:51

HOLDINGS

	Donations	Purchases	Withdrawals
Fiction	14	579	1,396
Nonfiction	15	296	147
Audiovisual	6	202	55
E-Resources	270	0	0
Total	305	1,077	1,598

New E-Resources

ebook
 evideo
 eaudio



Items in collection: 234,122
Titles in collection: 183,929

PROGRAMS

	events	attendance
Preschool Storytime	6	105
Toddler Storytime	3	97
Spanish Storytime	1	21
After School Programs	3	139

	events	attendance
Teen Tuesdays	5	65
Movie Nights	5	79
Learning @ the Library	0	0
Other Programs and Events	4	113

SERVICES

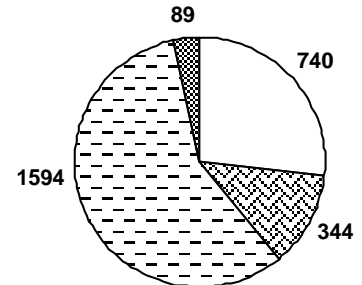
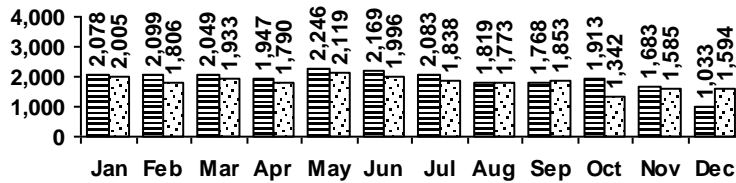
Scheduled Meeting Room Usage (this month / year to date)

	groups	meetings		groups	meetings
Lake Bonneville Room	21 / 236	28 / 337	Old Ephraim Room	12 / 122	29 / 268
Jim Bridger Room	15 / 201	26 / 343	Old Juniper Room	6 / 84	9 / 153
Logan History Room	7 / 71	11 / 92	Temple Fork Room	8 / 84	21 / 231

Total Groups: 69 / 798 Total Meetings: 124 / 1424

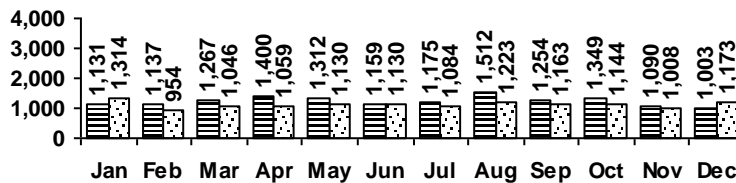
Reference Transactions

2013 2014



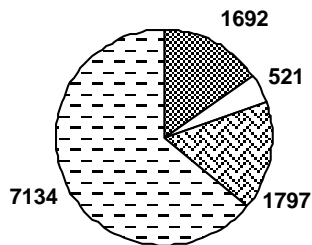
Other Transactions

2013 2014



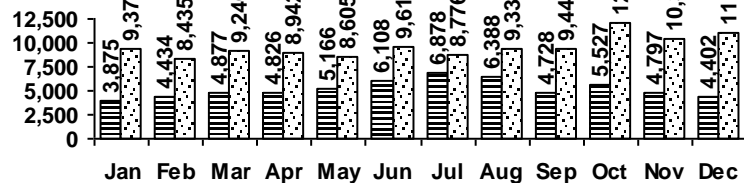
reference computer/printing directional/policy other

Computer Sessions



children teen adult wifi

2013 2014



(The totals for 2013 do not include the wifi usage)