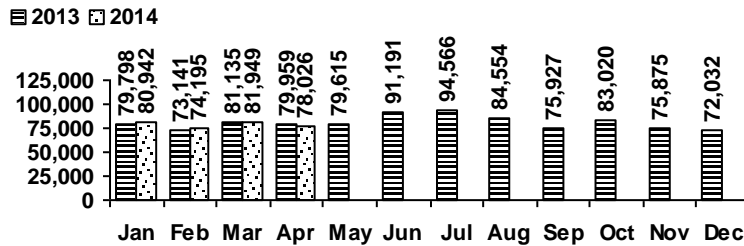


Logan Library Monthly Report April 2014

CIRCULATION

Total Circulation

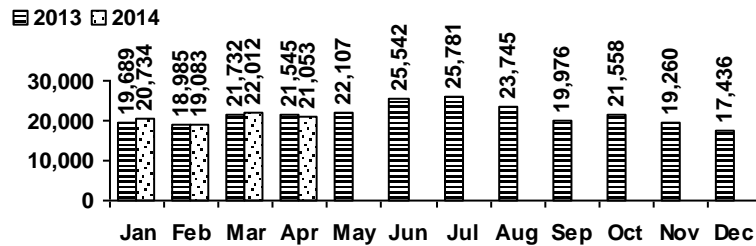


Average Physical Circulation: 2,923
Highest day: 3,789 on Wed, Apr 02

Physical Circulation: 75,992
Online Circulation: 2,034

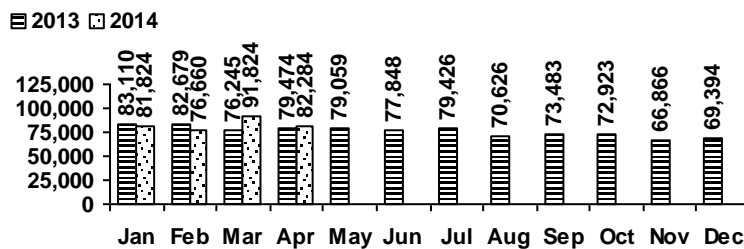
VISITS

Patron Exit Count



Average visits per day: 809.73
Physical circulations per visit: 3.6
Library card holders: 24,372

Online Visits



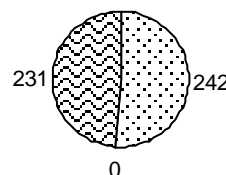
Average online visits per day: 2,742
Average visit length: 12:57

HOLDINGS

	Donations	Purchases	Withdrawals
Fiction	21	1,059	1,202
Nonfiction	236	388	284
Audiovisual	14	192	149
E-Resources	473	0	0
Total	744	1,639	1,635

New E-Resources

ebook
 evideo
 eaudio



Items in collection: 230,653
Titles in collection: 179,531

PROGRAMS

	events	attendance
Preschool Storytime	22	428
Toddler Storytime	11	292
Spanish Storytime	5	158
After School Programs	3	110

	events	attendance
Teen Tuesdays	5	37
Movie Nights	5	130
Learning @ the Library	8	16
Other Programs and Events	7	628

SERVICES

Scheduled Meeting Room Usage (this month / year to date)

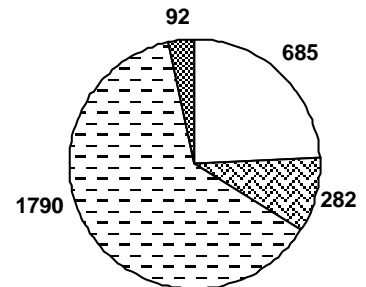
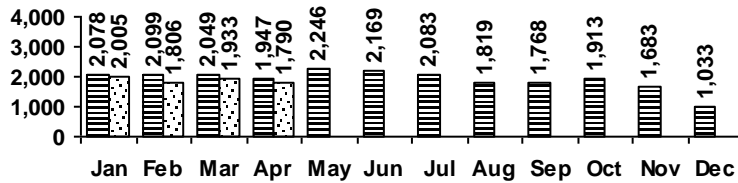
	groups	meetings
Lake Bonneville Room	23 / 85	29 / 110
Jim Bridger Room	22 / 74	38 / 118
Logan History Room	6 / 24	7 / 29

	groups	meetings
Old Ephraim Room	14 / 47	32 / 115
Old Juniper Room	11 / 39	17 / 68
Temple Fork Room	8 / 27	29 / 99

Total Groups: 84 / 296 Total Meetings: 152 / 539

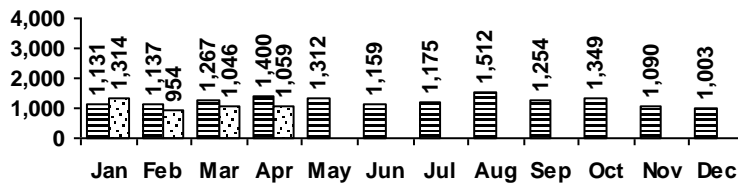
Reference Transactions

2013 2014



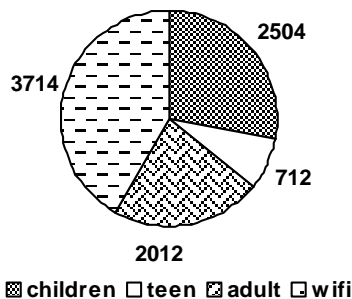
Other Transactions

2013 2014

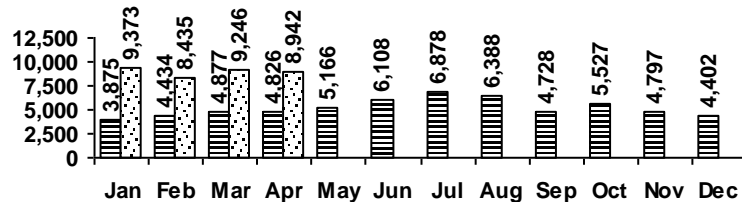


computer/printing directional/policy
reference other

Computer Sessions



2013 2014



(The totals for 2013 do not include the wifi usage)