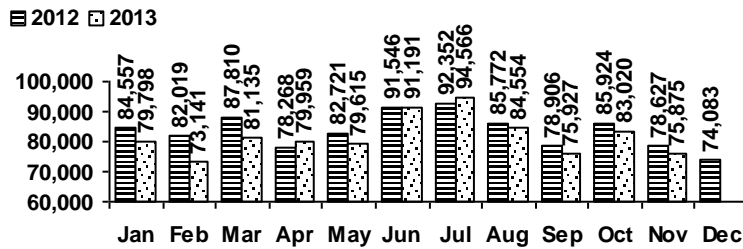


Logan Library Monthly Report November 2013

CIRCULATION

Total Circulation

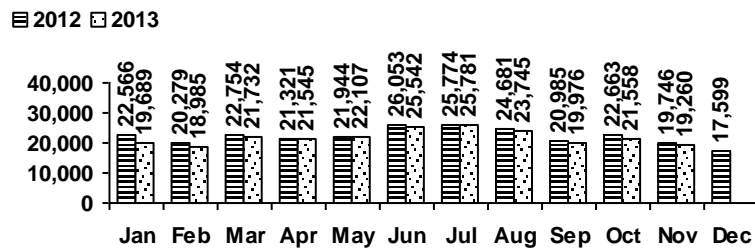


Average Physical Circulation: 3,233
Highest day: 4,317 on Tue, Nov 12

Physical Circulation: 74,359
Online Circulation: 1,516

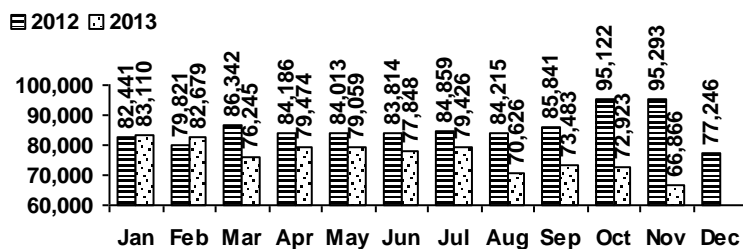
VISITS

Patron Exit Count



Average visits per day: 837.39
Physical circulations per visit: 3.9
Library card holders: 24,422

Online Visits



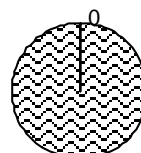
Average online visits per day: 2,228
Average visit length: 12:45

HOLDINGS

	Donations	Purchases	Withdrawals
Fiction	4	465	1,215
Nonfiction	117	225	701
Audiovisual	14	227	563
E-Resources	73	0	0
Total	208	917	2,479

New E-Resources

☐ ebook ▨ evideo ☑ eaudio



73

Items in collection: 232,299
Titles in collection: 179,142

PROGRAMS

Preschool Storytime

Number of Sessions: 18
 Total Attendance (Children): 362
 Adult Visitors: 21

Toddler Storytime

Number of Sessions: 9
 Children: 150
 Adults: 138

Other Programs and Events

Number held: 17
 Attendance: 351

SERVICES

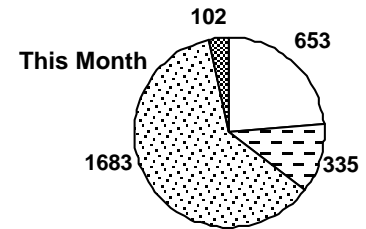
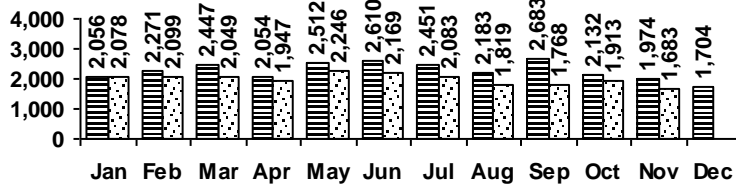
Scheduled Meeting Room Usage (this month / year to date)

	groups	meetings		groups	meetings
Lake Bonneville Room	22 / 168	28 / 241	Old Ephraim Room	13 / 104	29 / 242
Jim Bridger Room	12 / 109	18 / 174	Old Juniper Room	10 / 91	13 / 151
Logan History Room	9 / 65	11 / 77	Temple Fork Room	6 / 64	14 / 156

Total Groups: 72 / 601 Total Meetings: 113 / 1041

Reference Transactions

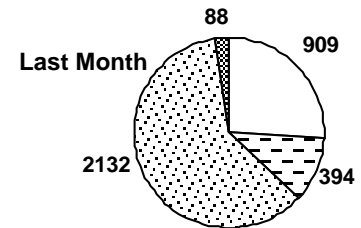
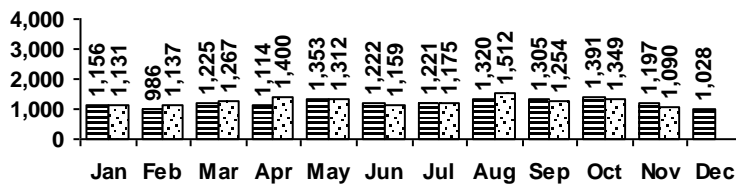
2012 2013



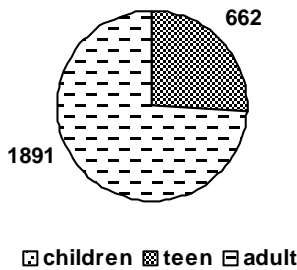
computer/printing directional/policy
 reference other

Other Transactions

2012 2013



Computer Sessions



children teen adult

2012 2013

