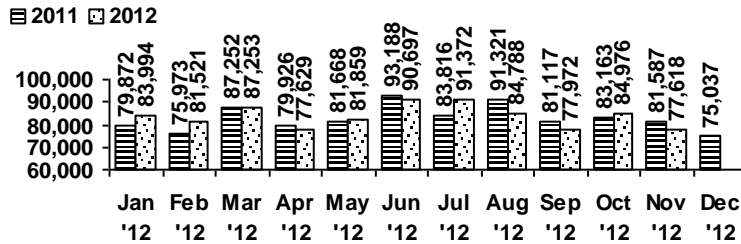


## Logan Library Monthly Report November 2012

### CIRCULATION

#### Total Circulation



Average Daily Circulation: 3,375  
Highest day: 5,161 on Tue, Nov 13

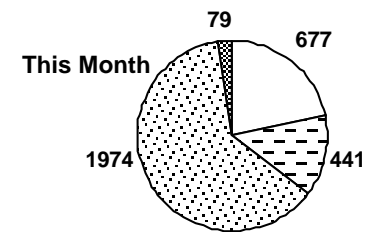
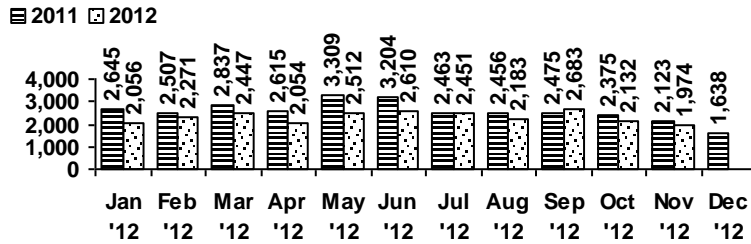
### SERVICES

#### Scheduled Meeting Room Usage (this month / year to date)

	groups	meetings		groups	meetings
Lake Bonneville Room	19 / 148	24 / 203	Old Ephraim Room	8 / 76	11 / 121
Jim Bridger Room	11 / 119	16 / 199	Old Juniper Room	4 / 48	12 / 148
Logan History Room	5 / 39	6 / 41	Temple Fork Room	5 / 50	11 / 97

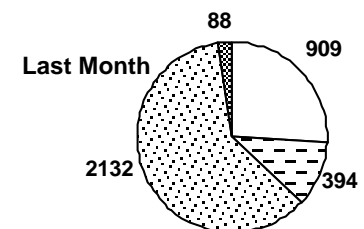
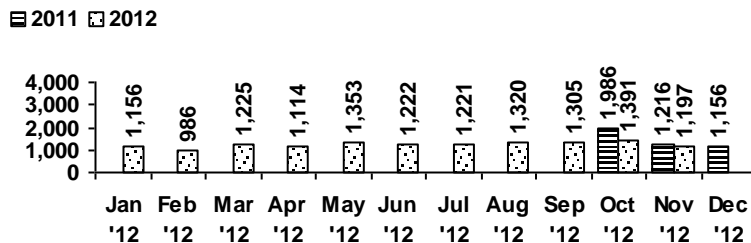
**Total Groups: 52 / 480    Total Meetings: 80 / 809**

#### Reference Transactions



computer/printing     directional/policy  
 reference     other

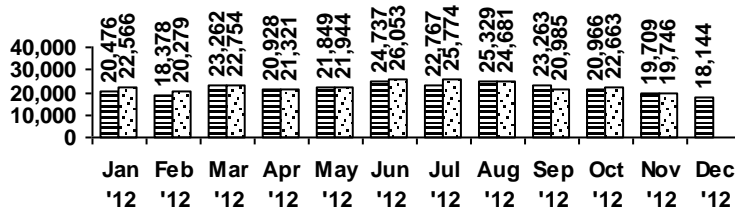
#### Other Transactions



## VISITS

### Patron Exit Count

■ 2011 □ 2012



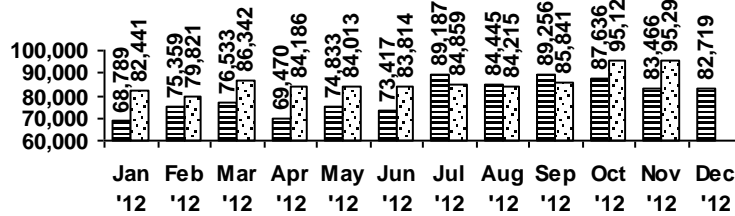
Average visits per day: 858.52

Circulations per visit: 3.9

Library card holders: 25,001

### Online Visits

■ 2011 □ 2012



Average online visits per day: 3,176

Average visit length: 6:13

## HOLDINGS

	Donations	Purchases	Withdrawals
Fiction	13	531	329
Nonfiction	291	211	182
Audiovisual	23	258	26
E-Resources	0	0	0
<b>Total</b>	<b>327</b>	<b>1,000</b>	<b>537</b>

Items in collection: 226,101

Titles in collection: 172,496

## PROGRAMS / PROJECTS

### Preschool Storytime

Number of Sessions: 20  
 Total Attendance (Children): 373  
 Adult Visitors: 9

### Toddler Storytime

Number of Sessions: 12  
 Children: 140  
 Adults: 126

### Tours / Programs/ Special Storyhours

Number held: 11  
 Attendance: 138