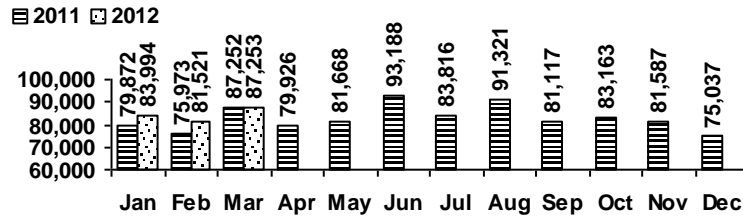


Logan Library Monthly Report March 2012

CIRCULATION

Total Circulation



Average Daily Circulation: 3,232
Highest day: 3,882 on Wed, Mar 07

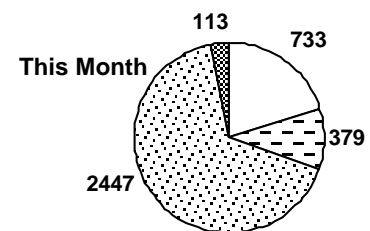
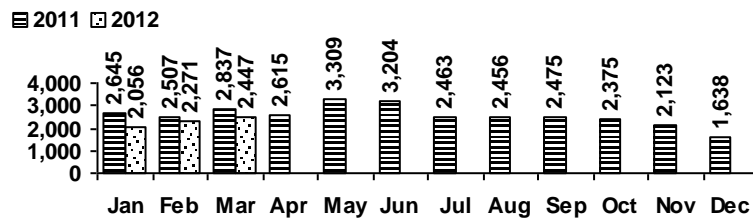
SERVICES

Scheduled Meeting Room Usage (this month / year to date)

	groups	meetings		groups	meetings
Lake Bonneville Room	10 / 33	13 / 47	Old Ephraim Room	8 / 24	11 / 35
Jim Bridger Room	13 / 36	21 / 57	Old Juniper Room	7 / 19	18 / 58
Logan History Room	2 / 6	2 / 6	Temple Fork Room	6 / 16	7 / 21

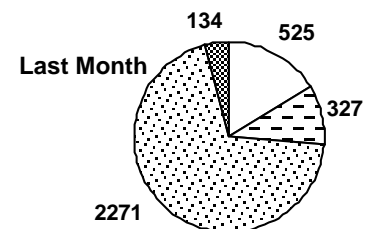
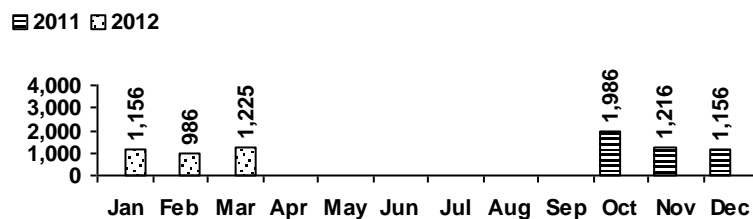
Total Groups: 46 / 134 Total Meetings: 72 / 224

Reference Transactions



computer/printing directional/policy
 reference other

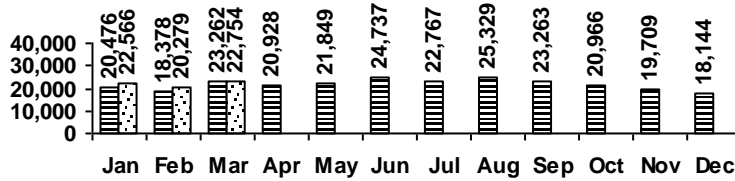
Other Transactions



VISITS

Patron Exit Count

■ 2011 □ 2012



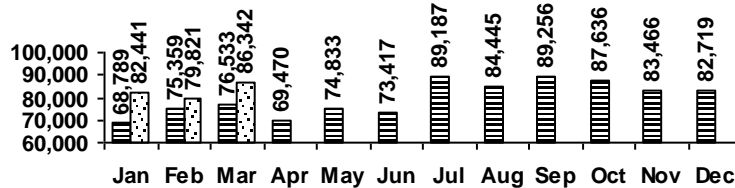
Average visits per day: 842.74

Circulations per visit: 3.8

Library card holders: 24,570

Online Visits

■ 2011 □ 2012



Average online visits per day: 2,785

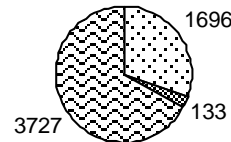
Average visit length: 8:02

HOLDINGS

	Donations	Purchases	Withdrawals
Fiction	24	566	548
Nonfiction	402	291	115
Audiovisual	51	327	56
E-Resources	5,556	0	0
Total	6,033	1,184	719

New E-Resources

■ ebook ■ evideo ■ eaudio



Items in collection: 213,698

Titles in collection: 161,217

PROGRAMS / PROJECTS

Preschool Storytime

Number of Sessions: 26
 Total Attendance (Children): 536
 Adult Visitors: 12

Toddler Storytime

Number of Sessions: 13
 Children: 135
 Adults: 110

Tours / Special Storyhours

Number held: 11
 Attendance: 113