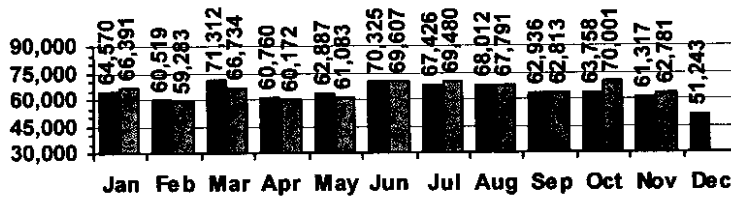


Logan Library Monthly Report November 2007

CIRCULATION

Total Circulation

■ 2006 ■ 2007



Average Daily Circulation: 2,729
Highest day: 4,110 on Mon, Nov 12

HOLDINGS

	Donations	Purchases	Discards
Fiction	130	546	281
Nonfiction	40	325	50
Audiovisual	46	184	421
Total	216	1,055	752

Items in collection: 180,267
Titles in collection: 137,417

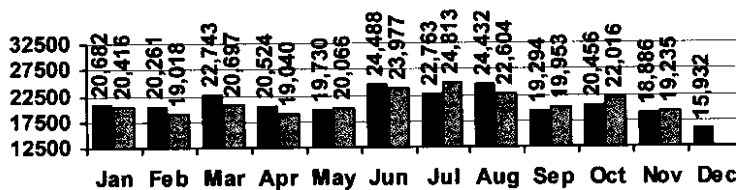
E-Resources			
Total	Added*	Overlays	Discarded
12,986	46	0	0

*e-audio books added: 46 *e-books added: 0

VISITS

Patron Exit Count

■ 2006 ■ 2007



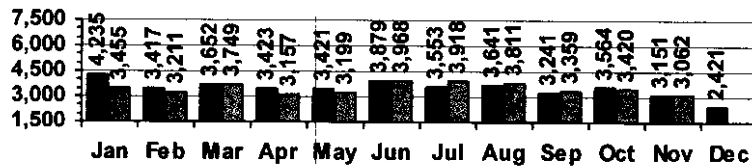
Average visits per day: 836.3
Circulations per visit: 3.3

Total number of library card holders: 25,652

SERVICES

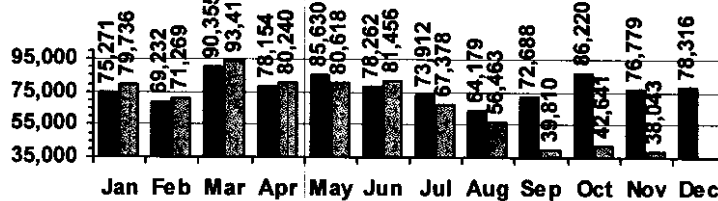
Total Number of Reference Questions Answered

■ 2006 ■ 2007



Number of Online Visits

■ 2006 ■ 2007



PROGRAMS / PROJECTS

1. **Storytime:** Number of Sessions: 20
 Average Attendance: 18.6
 Total Attendance: 372
 Adult Visitors: 3

2. Ongoing Projects:

A. Unique Management

In November, 28 new accounts were reported, \$50 in fines/fees was paid, and items valued at a total of \$277.80 were returned. Since August, approximately 50% of the accounts reported have responded. \$1,492 in fines/fees has been paid and items valued at a total of \$8,975 have been returned.