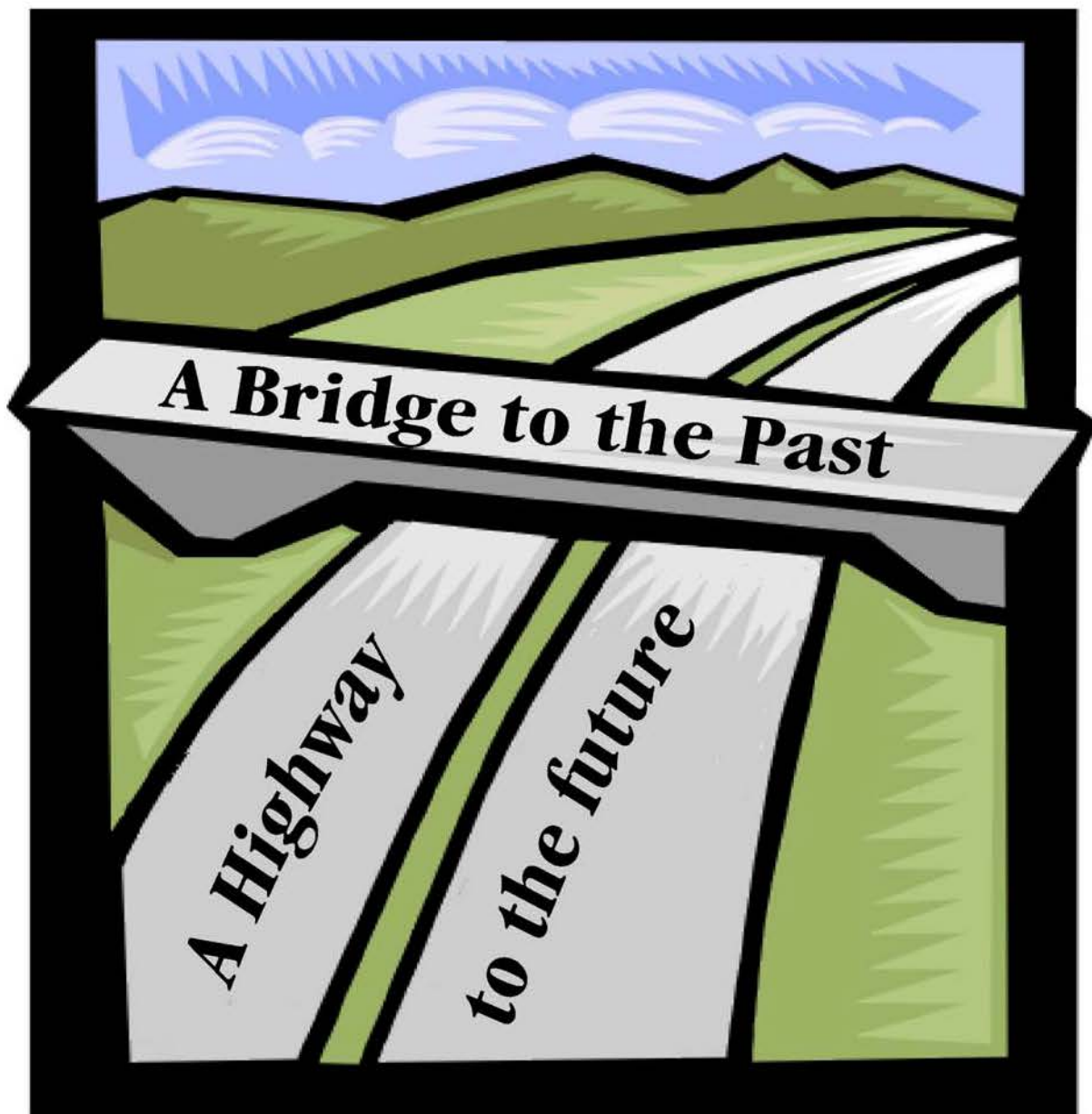


# The Logan Library Annual Report



2005



# **Logan Library Annual Report 2005**

It has been an effective year – one of continuing improvement and steady growth.

The addition of e-mail notification has improved service to the public and reduced the cost of this service. The migration to the new OCLC collection analysis software has provided a clearer view of the library's collections making it possible to better meet the needs of the public. The on-going refinement of the library's home page and online resources are making it possible for the public to search and retrieve information they need quickly and easily.

Growth has been continual in all areas of the library. Circulation rose by 2%. Reference services increased by 22%. Online visits to the library's home page grew by 47%. Visits to the community calendar were up 71%; the community organizations page 67%; the Cache almanac 43%; and the teen page 27%.

Planning, including long-range planning, is a continuing process for the library board and the library staff as we review what has been done and project the forthcoming informational needs of the citizenry. A citywide survey is planned for 2006 to help determine the effectiveness of the library in the eyes of the public.

During 2005 the library staff created a new database making it possible for us to analyze usage of the library in each of the city-identified neighborhoods. The collection and analysis of the information we obtain from various sources is very helpful to the library board and the library staff as we determine the needs for the library for the coming year and for the next 5 to 10 years.

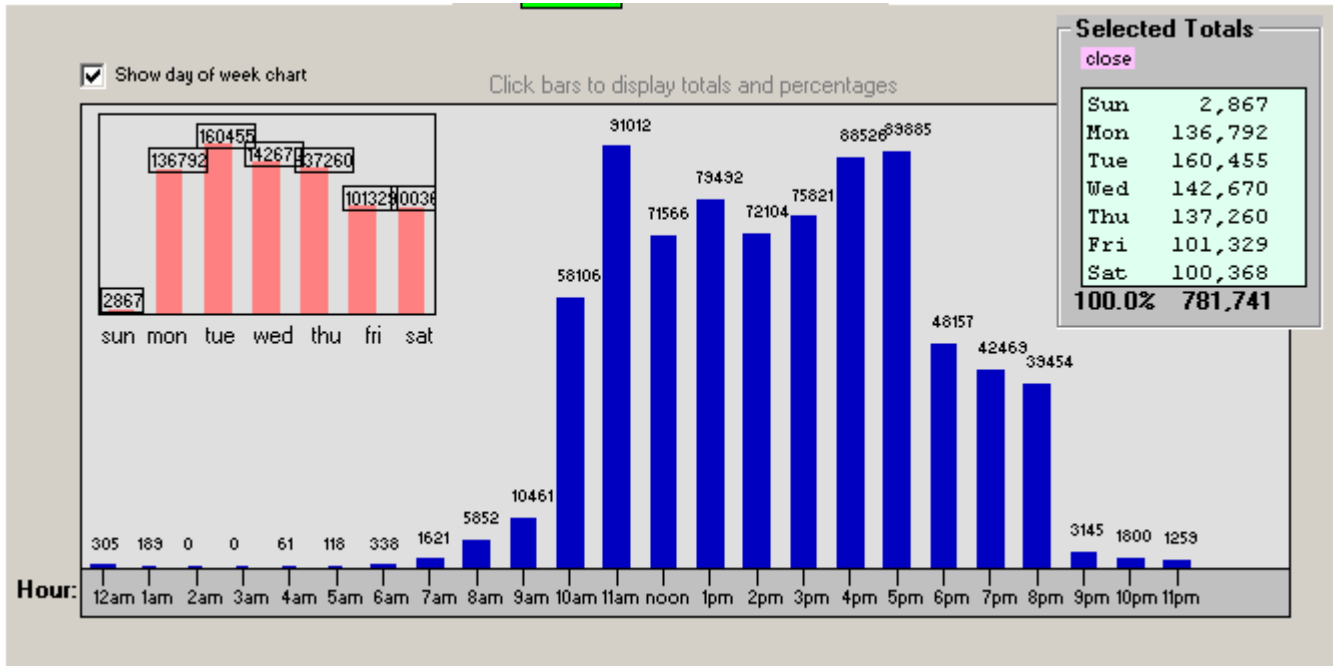
**Logan Library  
Annual Report  
2005**

**Selected Performance Measures**



## 2005 Circulation

Based on Charges in Workflows and Renewals in both Workflows and iBistro



## 2005 Transactions

5,936	AV -- Add Item (Vols/call#s,copies)
1,785	BY -- Bill User
646,906	CV -- Charge Item (No reserve/bookin
646,841	EV -- Discharge Item (Checkin non-bo
55,000	FV -- Remove Item (Title/call#/copy)
4,992	FY -- Remove User (Patron/staff)
12,944	FZ -- Remove Hold (Remove hold)
2,611	Ju -- Create Request (Patron request
2,339	JV -- Create Item (Title/call#/copy)
5,233	JY -- Create User (Patron or staff)
70,540	JZ -- Create Hold (Place a hold)
6	KV -- Duplicate Item
630	KY -- Duplicate User (Copy existing
5,618	OY -- Transfer Item (to another libr
98,085	PY -- Pay User (Paying user bill)
76,323	RV -- Renew Item (One non-reserve it
58,512	RY -- Renew User (All/some user char
599	Wi -- Use Gateway (Use gateway eleme

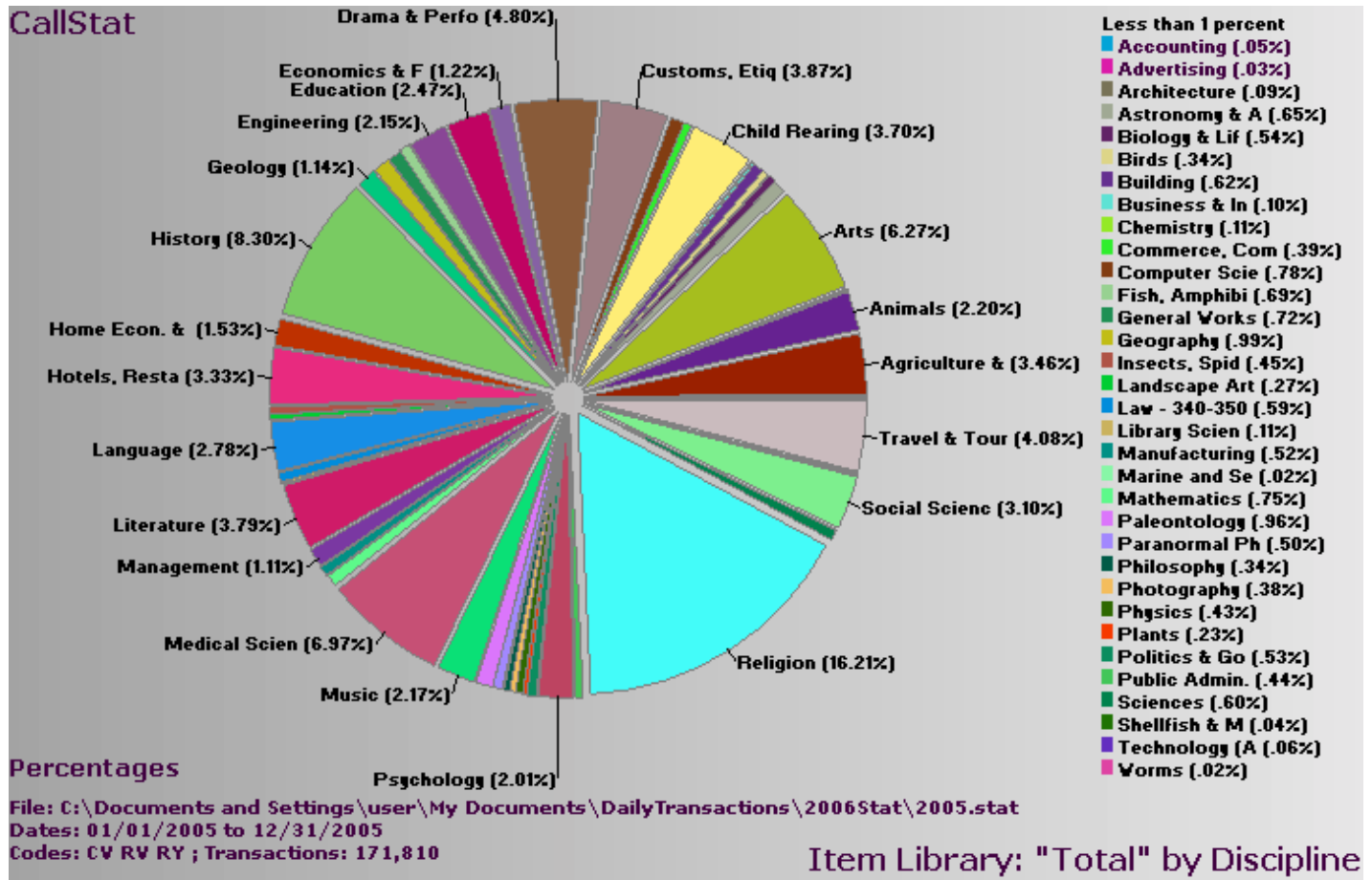
Doubleclick to show Data Codes

**1,694,906 Transaction Codes**

1,694,900 TOTAL

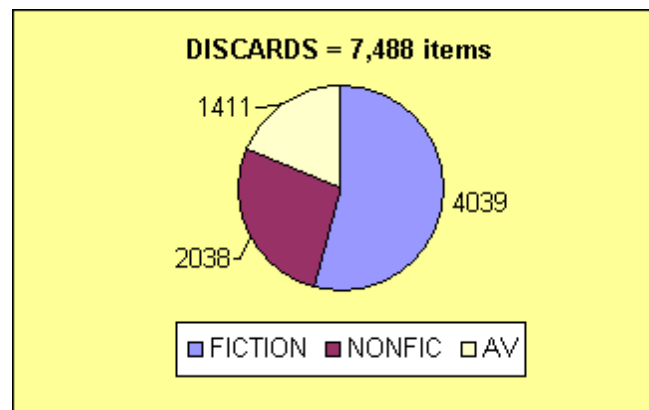
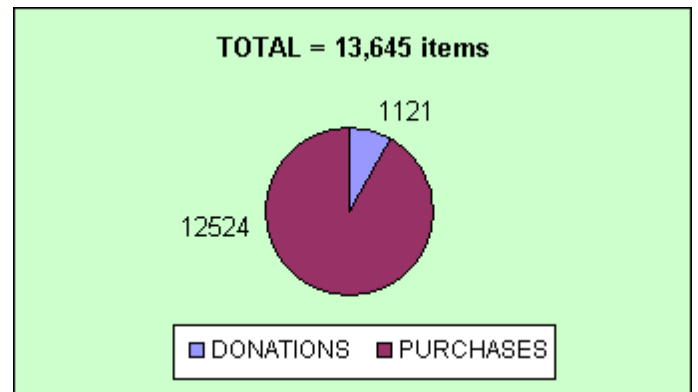
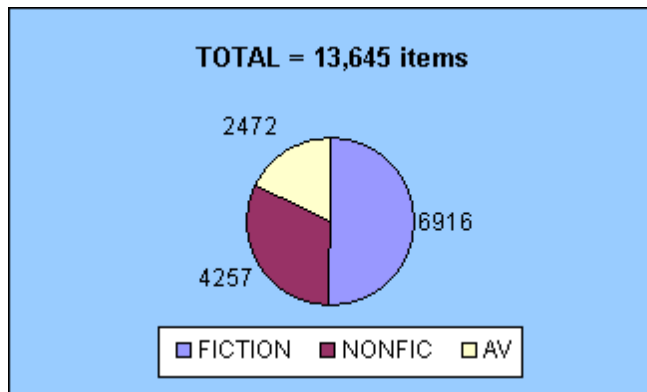
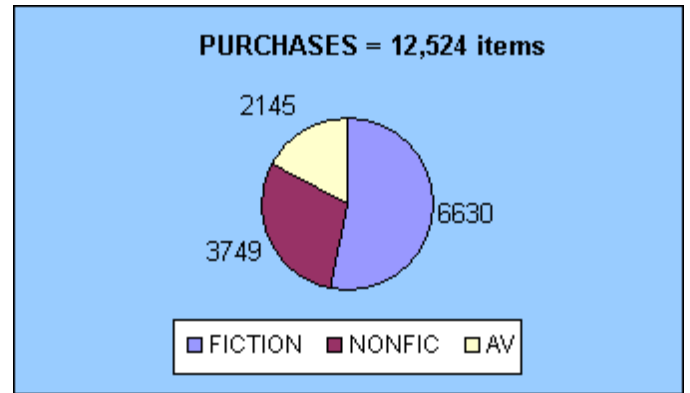
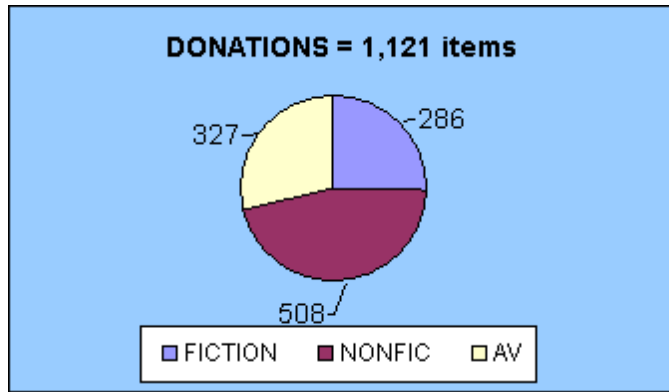


Circulation by Call Number – 2005





**Technical Processing Statistics**  
Acquisitions, discards, and total holdings



ADDED in 2005                      8,418 titles                      13,645 items

December 31, 2005

Items in collection = 173,210\*

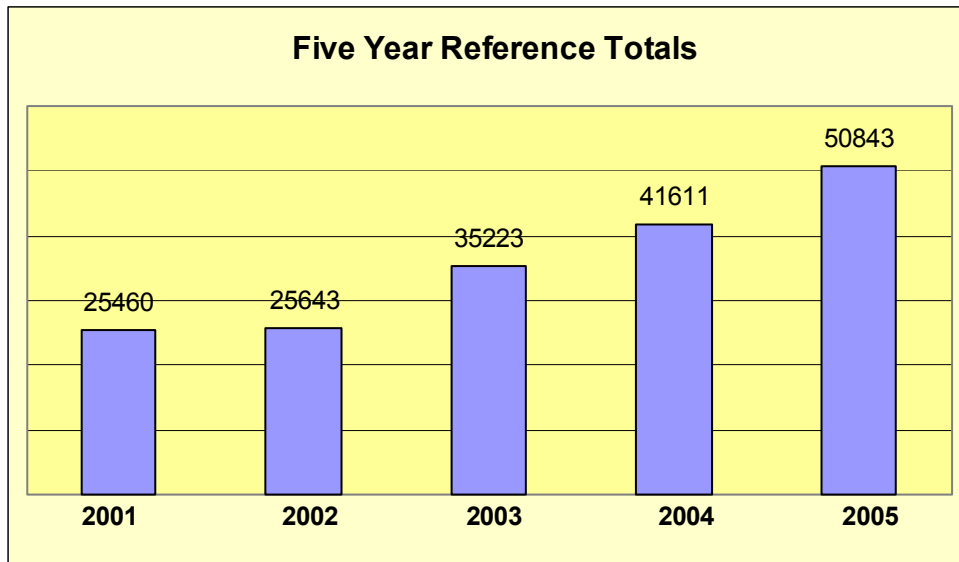
Titles in collection = 131,960\*

\*includes 9,471 e-resources



---

## Five Year Reference Comparisons

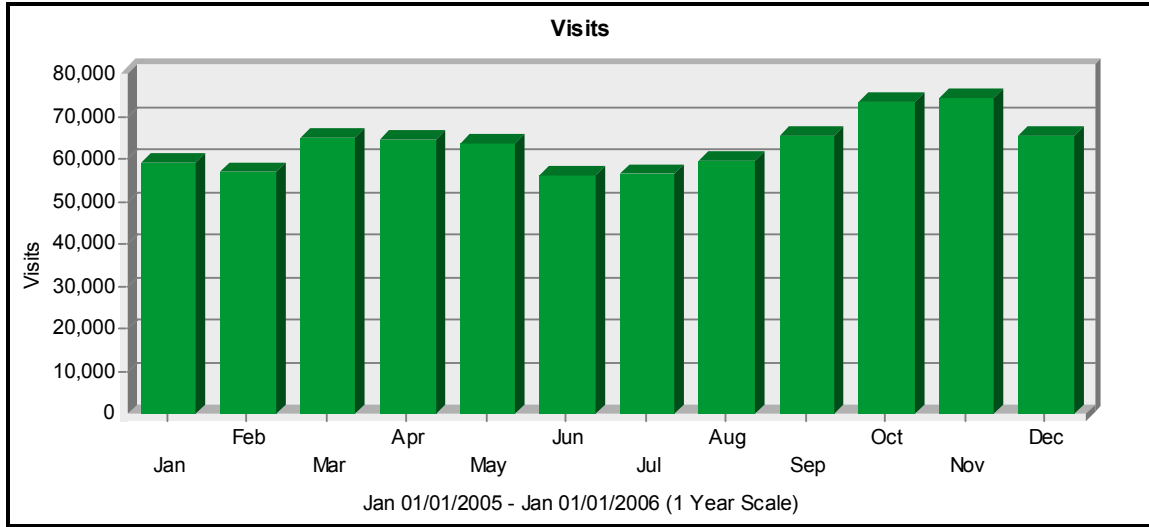




## Web Page Usage Statistics - 2005

### General Statistics

The Visits graph displays the overall number of visits to your Web site. The General Statistics table provides an overview of the activity for your Web site during the specified time frame.



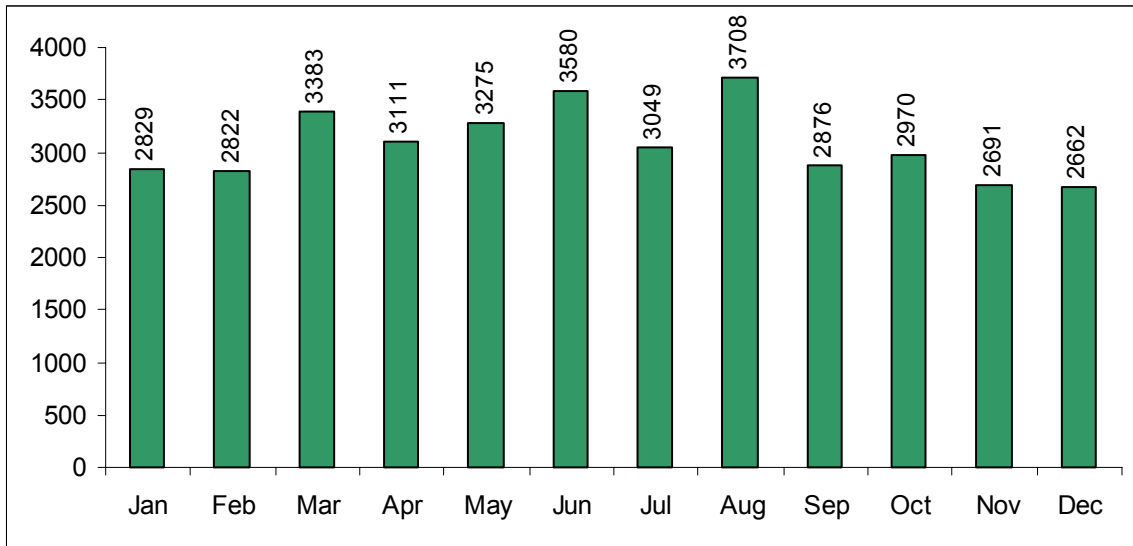
<b>General Statistics - Report Range: 01/01/2005 00:00:00 - 01/01/2006 23:59:59</b>		
<b>Hits</b>	Entire Site (Successful)	9,447,247
	Average per Day	25,812
	Home Page	341,476
<b>Page Views</b>	Page Views	3,787,146
	Average per Day	10,347
	Average per Unique Visitor	13
	Document Views	3,643,534
<b>Visits</b>	Visits	761,269
	Average per Day	2,079
	Average Visit Length	00:22:39
	Median Visit Length	00:00:01
	International Visits	13.12%
	Visits of Unknown Origin	6.75%
	Visits from United States	80.11%
	Visits Referred by Search Engines	232,706
<b>Visitors</b>	Visits from Spiders	138,536
	Unique Visitors	277,895
	Visitors Who Visited Once	241,031
	Visitors Who Visited More Than Once	36,864





---

## Number of Computer Reservations

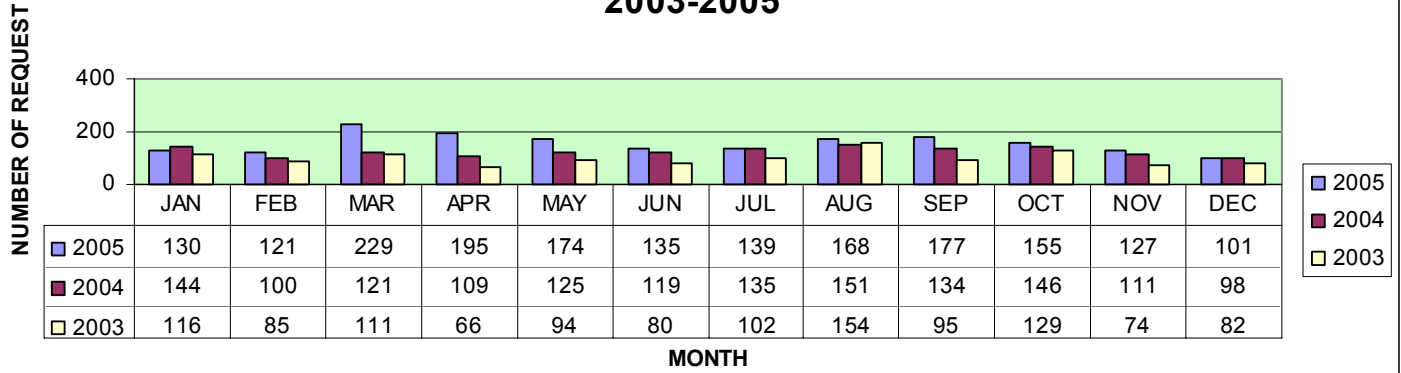


TOTAL: 36,956

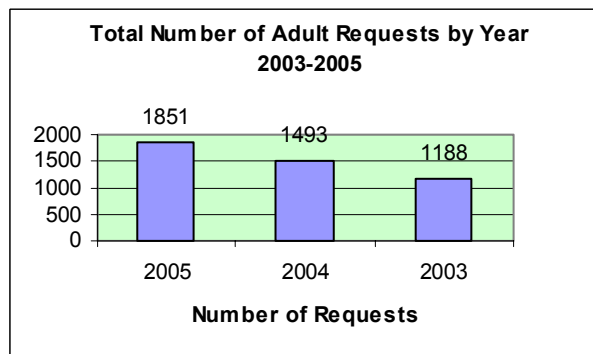
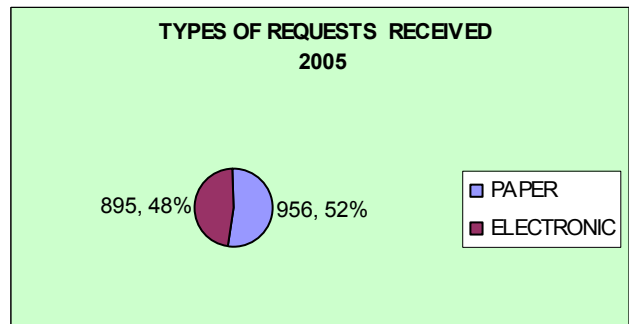
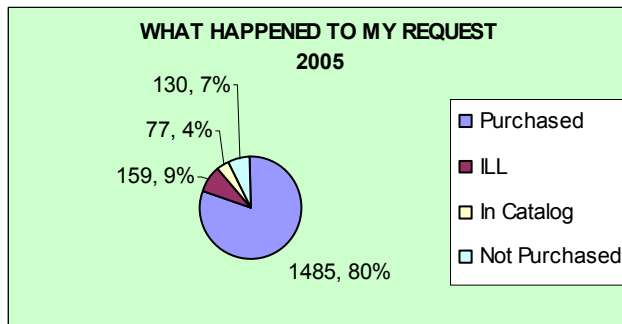
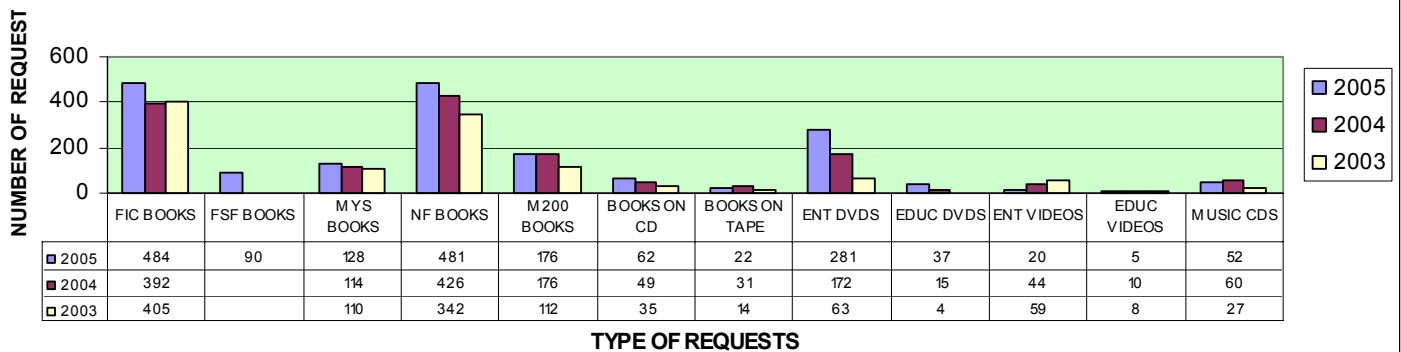


**PRINT AND ELECTRONIC REQUESTS FOR TITLES TO BE PURCHASED FOR ADULTS**

**NUMBER OF ADULT REQUESTS RECEIVED BY MONTH  
2003-2005**



**ADULT REQUESTS BY FORMAT AND GENRE  
2003-2005**





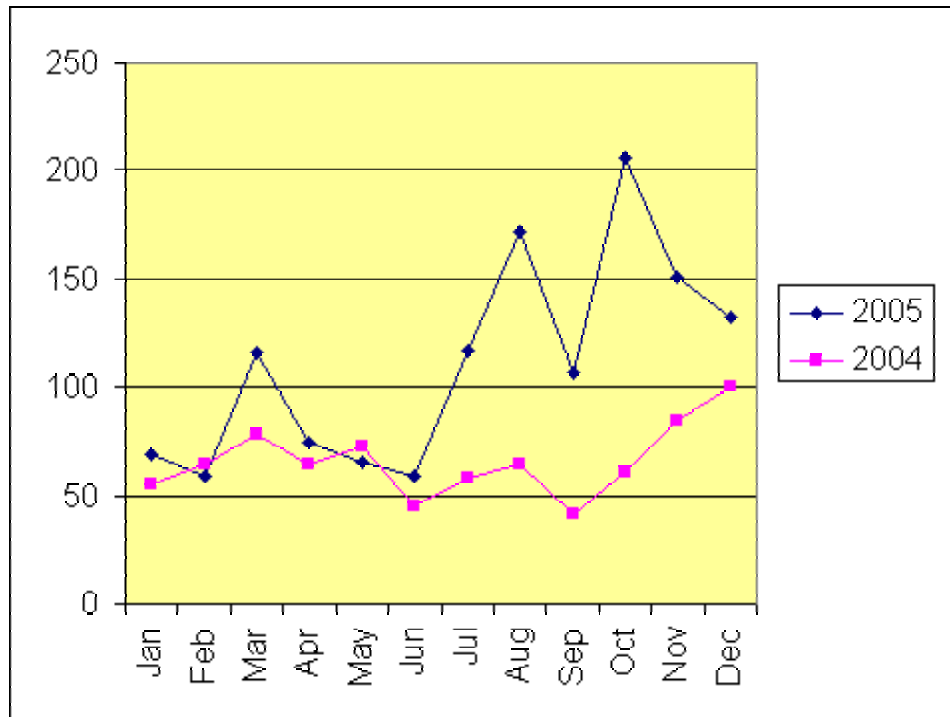
**Request statistics for Children's Collection 2005**  
(requests to purchase new materials for the Children's book and audio-visual collections)  
**compared with statistics from 2004**

**2005**

Jan	69
Feb	59
Mar	116
Apr	74
May	65
Jun	59
Jul	117
Aug	172
Sep	107
Oct	206
Nov	151
Dec	132

**2004**

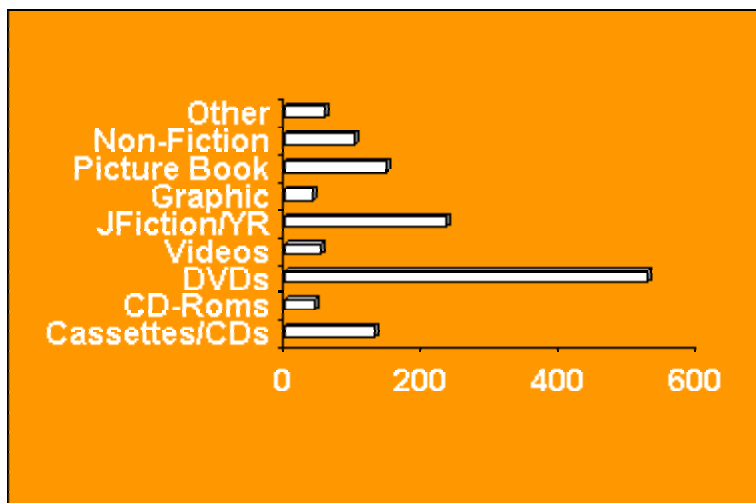
Jan	55
Feb	64
Mar	78
Apr	64
May	73
Jun	45
Jul	58
Aug	64
Sep	41
Oct	61
Nov	85
Dec	100



Requests Jan-Dec 2004: **788**  
Requests Jan-Dec 2005: **1327**

**Children's Requests by type of material, January-December 2005**

Cassettes/CDs	130
CD-Roms	42
DVDs	527
Videos	51
JFiction/YR	234
Graphic Novels	39
Picture Book	147
Non-Fiction	99
Other	58
(holiday, board books, non-English)	
<b>Total</b>	<b>1327</b>





## Request Statistics for YA Collection 2005

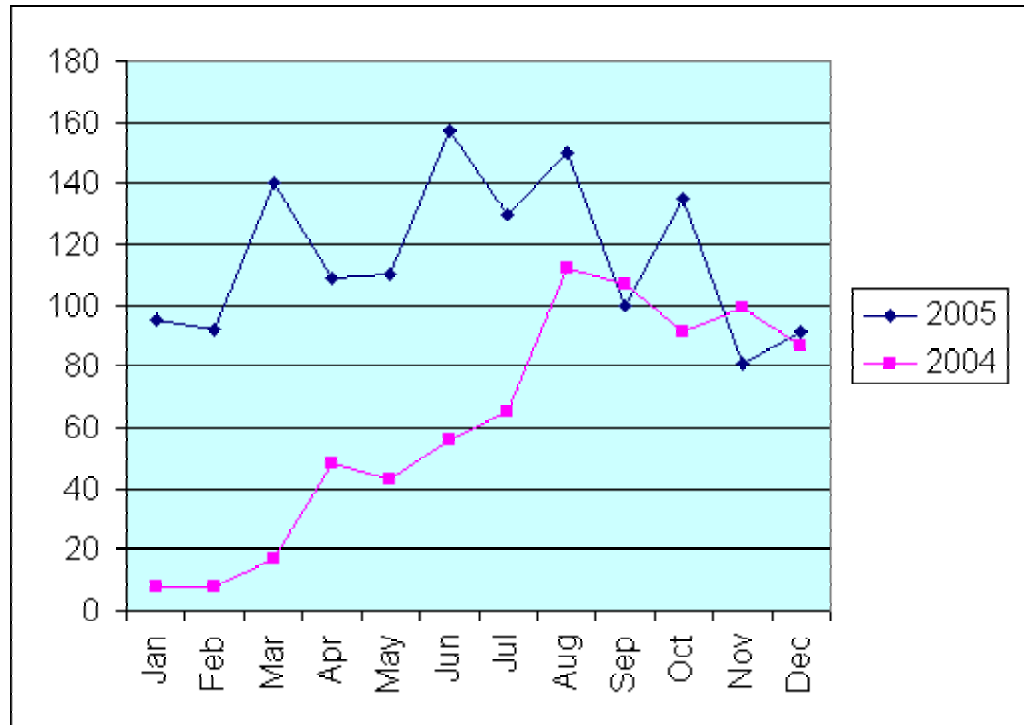
(requests to purchase new materials for the YA book and audio-visual collections)  
**compared with statistics from 2004**

### 2005

Jan	95
Feb	92
Mar	140
Apr	109
May	110
Jun	157
Jul	130
Aug	150
Sep	100
Oct	135
Nov	81
Dec	91

### 2004

Jan	8
Feb	8
Mar	17
Apr	48
May	43
Jun	56
Jul	65
Aug	112
Sep	107
Oct	91
Nov	99
Dec	87



**2004 requests, January - December**

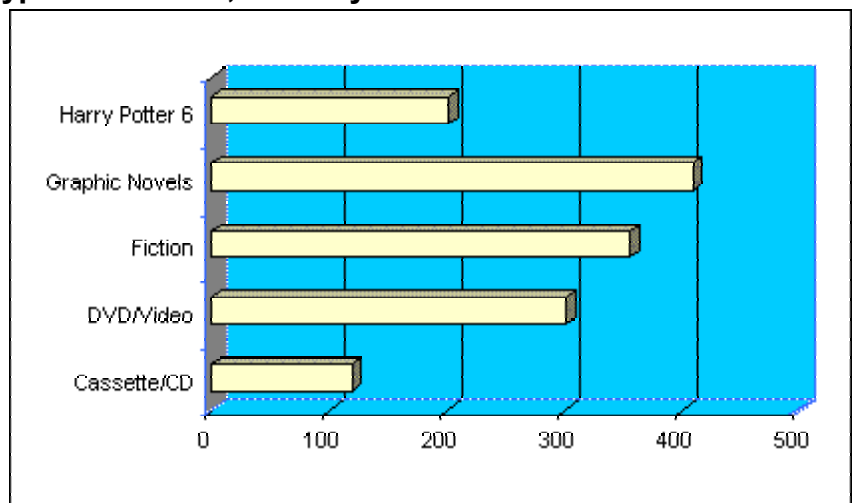
**741**

**2005 requests, January - December**

**1392**

### YA Requests by type of material, January-December 2005

Cassette/CD	120
DVD/Video	302
Fiction	356
Graphic Novels	409
Harry Potter 6	202
Other	3
<b>Total</b>	<b>1392</b>



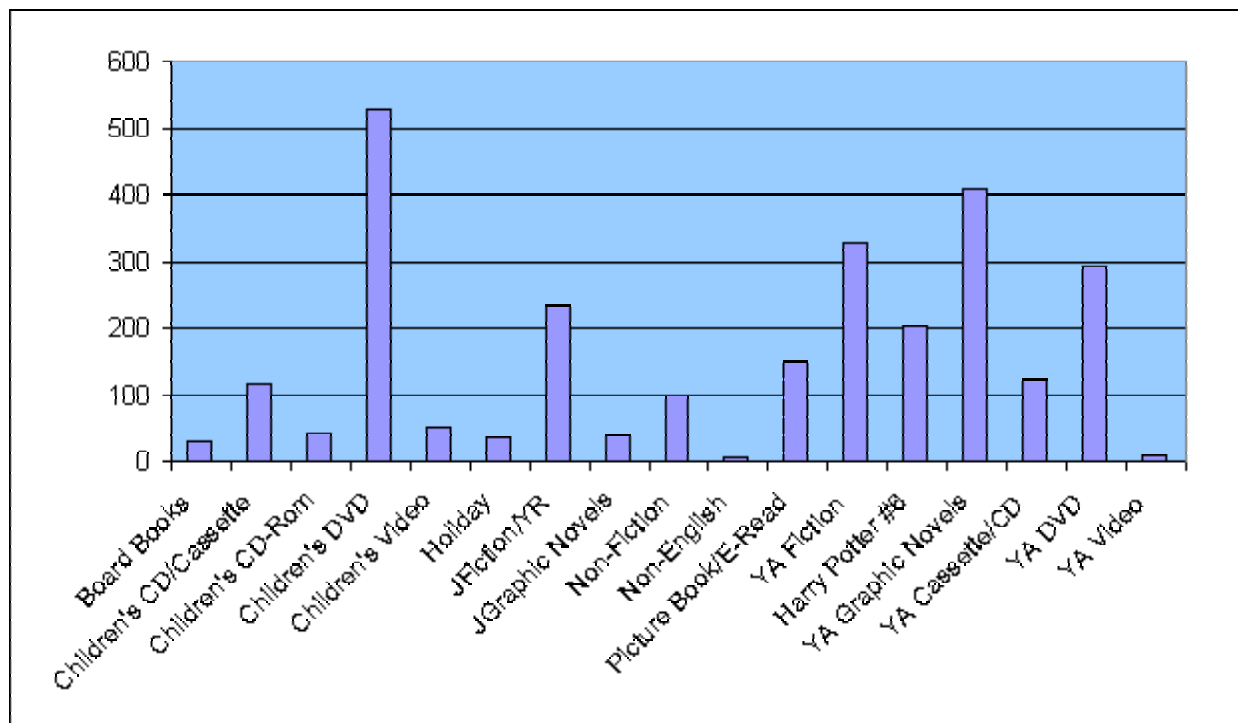


# LOGAN LIBRARY

## Performance Measure

### Children's/Teen Requests January-December 2005

	Jan-June	July-Dec	Total
Board Books	10	19	29
Children's CD/Cassette	17	100	117
Children's CD-Rom	13	29	42
Children's DVD	175	352	527
Children's Video	47	4	51
Holiday	11	24	35
JFiction/YR	88	146	234
JGraphic Novels	23	16	39
Non-Fiction	29	70	99
Non-English	2	4	6
Picture Book/E-Read	27	121	148
YA Fiction	92	236	328
Harry Potter #6	174	28	202
YA Graphic Novels	247	162	409
YA Cassette/CD	73	48	121
YA DVD	107	187	294
YA Video	10	0	10
<b>Total Requests:</b>	<b>1145</b>	<b>1546</b>	<b>2691</b>



We also had 270 more requests for graphic novels which were added to the adult collection.

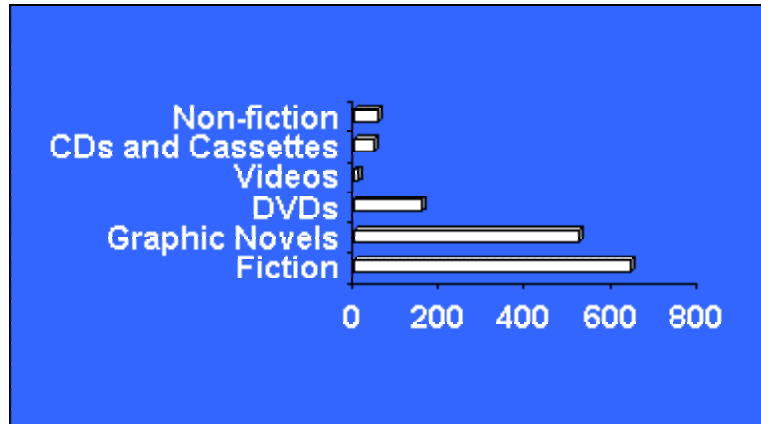
**Grand total of requests for 2005: 2961**



**LOGAN LIBRARY**  
Performance Measure

**Materials Purchased for the YA Collection, January-December 2005**

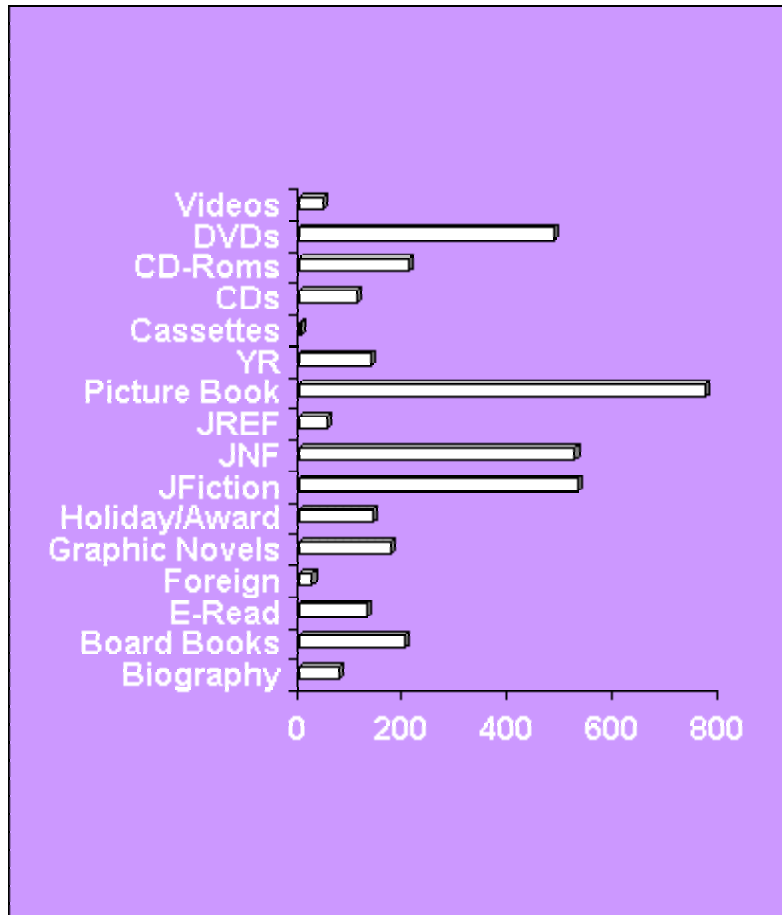
Fiction	641
Graphic Novels	518
DVDs	154
Videos	9
CDs and Cassettes	46
Non-fiction	54



**Total items purchased: 1422**

**Materials Purchased for the Children's Collection, January-December 2005**

Biography	76
Board Books	199
E-Read	129
Foreign Language	24
Graphic Novels	172
Holiday/Award	138
JFiction	529
JNF	523
JREF	53
Picture Book	770
YR	136
Cassettes	3
CDs	108
CD-Roms	207
DVDs	483
Videos	45



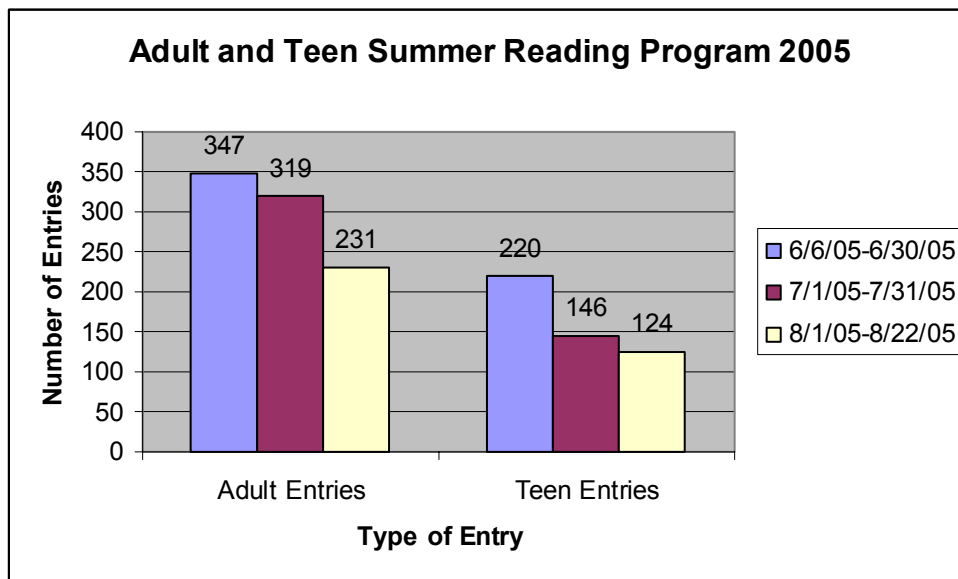
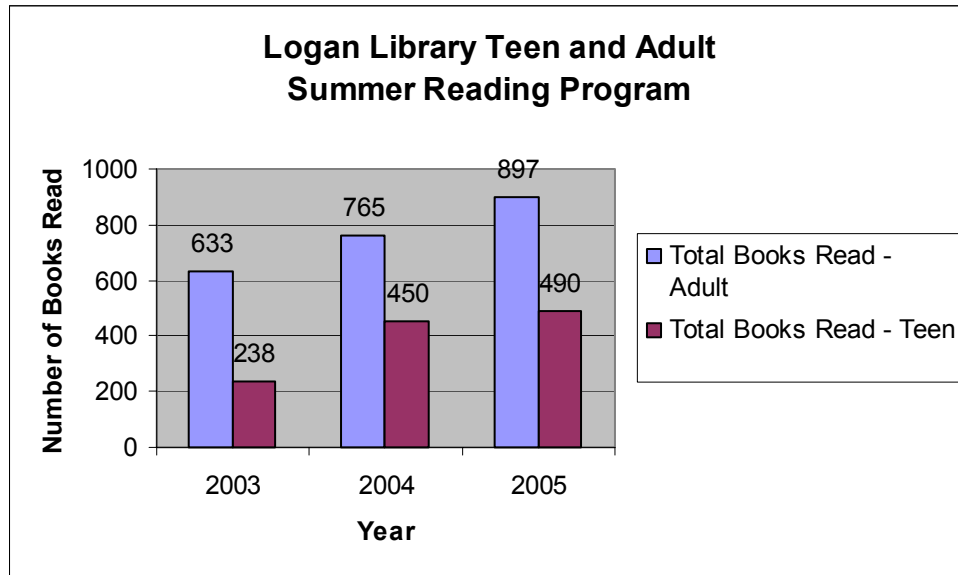
**Total items purchased: 3595**

**Total for both collections: 5017**

Includes items purchased with grants and donations



**Adult and Teen Summer Reading Program 2003-2005  
Final Report**



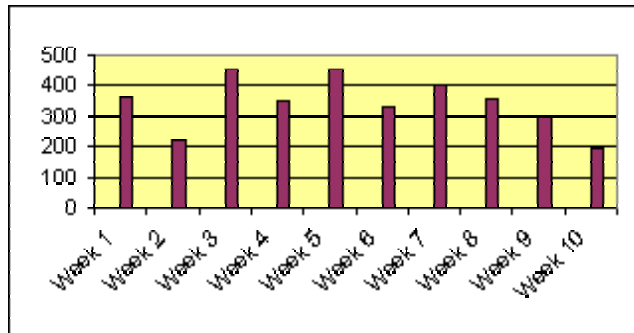
## Summer Reading Program 2005 - Statistics

### Enrollment: 2203 children

Last year's enrollment: 2305

### Number of Reading Records turned in:

Week 1	362
Week 2	218
Week 3	453
Week 4	351
Week 5	455
Week 6	332
Week 7	400
Week 8	359
Week 9	297
Week 10	198
After Week 10	12



**Total: 3437 Average of 342.5/week**

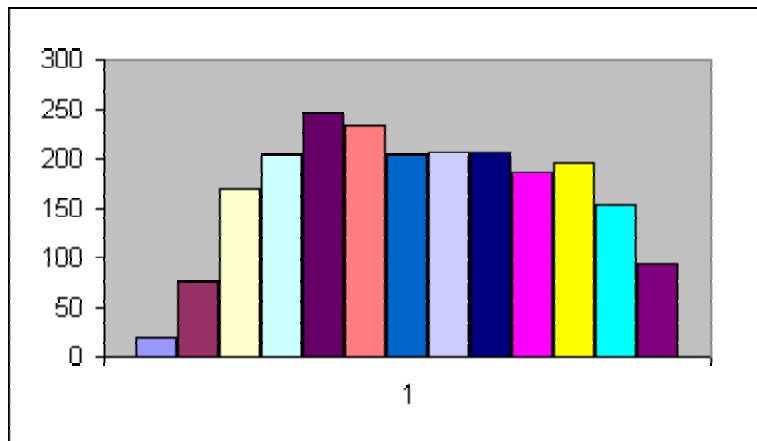
**This represents 962,360 minutes of reading time, equaling 16039 hours or 668 24-hour days**

(Last year: 3410 in 9 weeks - average of 378/week, 664 days total)

**Number of participants who turned in at least one reading record: 1368 (62%)**

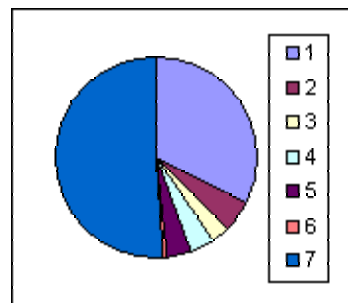
### Breakdown by age:

0	21
1	77
2	170
3	205
4	246
5	235
6	205
7	207
8	206
9	186
10	197
11	154
12	94



### Schools Attended:

1. Preschoolers	713
2. County Schools	115
3. Home School	62
4. Private or Charter Schools	85
5. Edith Bowen	84
6. Summer Visitors	20
7. Logan City Schools	1124



Logan City Schools:	
Adams	134
Bridger	152
Ellis	150
Hillcrest	167
Wilson	166
Woodruff	146
MLMS	209

Note: the percentage of preschoolers signing up for the Summer Reading Program continues to rise. Two years ago, preschoolers accounted for 25 percent of the total enrollment. Last year, it was 30 percent. This year, 33 percent.



**Logan Library  
Annual Report  
2005**

**Collection Analysis  
Sample Report**

**Biological Sciences**

## **Collection Analysis Report**

**Division:** Biological Sciences

**Date:** December 2005

## **Collection Scope:**

The Biological Sciences collection consists of materials in the following Dewey Classifications:

<b>508-508.1</b>	Natural history
<b>508.3-508.9</b>	Natural history
<b>570</b>	Life sciences; biology
<b>571-571.4</b>	Physiology & related subjects
<b>571.6-571.9</b>	Physiology & related subjects
<b>572</b>	Biochemistry
<b>573</b>	Specific physiological systems in animals
<b>574</b>	Biology
<b>575</b>	Specific parts of & systems in plants
<b>576</b>	Genetics & evolution
<b>577</b>	Ecology
<b>578</b>	Natural history of organisms
<b>579</b>	Microorganisms, fungi & algae
<b>580</b>	Plants (Botany)
<b>581</b>	Specific topics in natural history
<b>582</b>	Plants noted for characteristics & flowers
<b>583</b>	Dicotyledons
<b>584</b>	Monocotyledons
<b>585</b>	Gymnosperms; conifers
<b>586</b>	Seedless plants
<b>587</b>	Vascular seedless plants
<b>588</b>	Bryophytes
<b>589</b>	Thallobionta (Thallophyta) & Prokaryotae
<b>590</b>	Animals (Zoology)
<b>591</b>	Specific topics in natural history
<b>592</b>	Invertebrates
<b>593</b>	Marine & seashore invertebrates
<b>594</b>	Mollusks & molluscoids
<b>595</b>	Arthropods
<b>596</b>	Chordates
<b>597</b>	Cold-blooded vertebrates; fishes
<b>598</b>	Birds
<b>599-599.8</b>	Mammals

The total collection is valued at \$65,891. The average price of items in the collection is \$18.13.

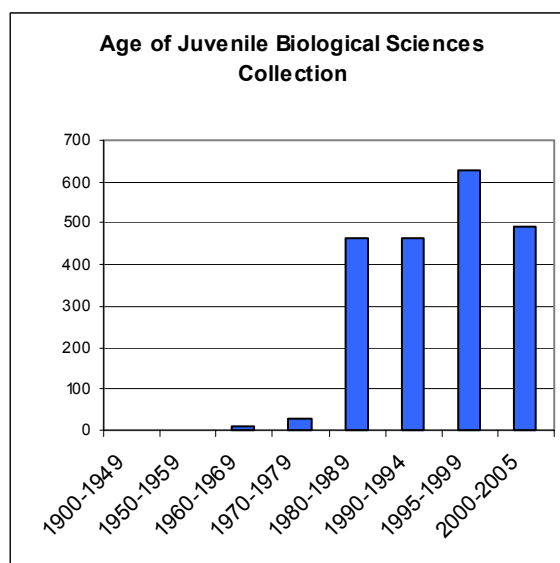
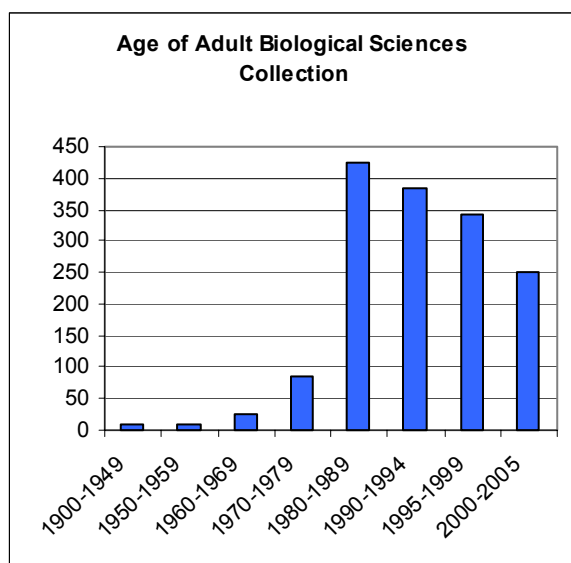
## Collection Age:

The following tables and charts show the age of materials in the adult and juvenile biological sciences collections:

	1900-1949	1950-1959	1960-1969	1970-1979	1980-1989	1990-1994	1995-1999	2000-2005	Totals
Adult	10	9	24	84	426	385	343	250	<b>1531</b>
Juvenile	1	2	8	31	463	465	629	493	<b>2092</b>
<b>Totals</b>	<b>11</b>	<b>11</b>	<b>32</b>	<b>115</b>	<b>889</b>	<b>850</b>	<b>972</b>	<b>743</b>	<b>3623</b>

The following table shows the average age of materials in the adult and juvenile biological sciences collections:

	Books	Reference	Audio Visual	Electronic Books	Entire Collection
Adult	1992	1992	1993	1998	1992
Juvenile	1997	1995	1994	1996	1996
<b>Totals</b>	<b>1993</b>	<b>1994</b>	<b>1993</b>	<b>1997</b>	<b>1993</b>



## Collection Materials

The following table shows the numbers and types of materials in the adult and juvenile biological sciences collections.

	Books	Computer Files	Serial Publications	Sound Recordings	Texts, Electronic	Visual Materials	Totals
Adult	1217	3	4	10	96	201	<b>1531</b>
Juvenile	1972	5	0	3	58	54	<b>2092</b>
<b>Totals</b>	<b>3189</b>	<b>8</b>	<b>4</b>	<b>13</b>	<b>154</b>	<b>255</b>	<b>3623</b>

# Collection Divisions:

The following table shows the categories in the biological sciences collection. Each category is broken down to show the subjects in that category.

	1900-1949	1950-1959	1960-1969	1970-1979	1980-1989	1990-1994	1995-1999	2000-2005	Totals
Animal Behavior, Anatomy, Embryology	1	1	2	3	49	56	42	62	216
Biology, General	0	4	2	10	39	26	33	26	140
Birds	1	1	6	12	104	96	104	68	392
Botany, General	2	0	3	12	31	34	26	19	127
Botany, Specific Fields	1	2	0	4	28	25	23	7	90
Chordates - Vertebrates	0	0	0	0	1	2	1	0	4
Cytology	0	0	0	0	2	2	3	4	11
Ecology	0	0	1	16	41	46	56	33	193
Fishes	0	0	1	2	12	17	37	27	96
Genetics	0	0	0	4	14	12	18	19	67
Invertebrates	0	0	1	4	97	69	135	91	397
Mammals	0	1	4	9	168	163	229	164	738
Microbiology	0	0	0	0	10	13	5	16	44
Microscopy	0	0	0	0	1	2	0	1	4
Natural History	4	2	11	30	149	108	88	49	441
Plant Anatomy	0	0	0	0	3	4	7	9	23
Plant Ecology	0	0	0	0	5	4	7	1	17
Plant Physiology	0	0	0	0	4	6	2	2	14
Reproduction & Life	0	0	0	0	2	4	9	3	18
Reptiles & Amphibians	0	0	0	1	34	48	60	42	185
Virology	0	0	0	0	1	3	0	0	4
Zoology, General	2	0	1	8	94	110	87	100	402
<b>Totals</b>	<b>11</b>	<b>11</b>	<b>32</b>	<b>115</b>	<b>889</b>	<b>850</b>	<b>972</b>	<b>743</b>	<b>3623</b>

## Animal Behavior, Anatomy, Embryology

	1900-1949	1950-1959	1960-1969	1970-1979	1980-1989	1990-1994	1995-1999	2000-2005	Totals
Anatomy, General	0	0	0	0	2	2	1	0	5
Animal Behavior - General	0	0	0	1	3	11	2	9	26
Animal Behavior - Special Topics	1	1	2	1	25	11	17	11	69
Animal Behavior, Anatomy, Embryology	0	0	0	1	16	27	18	35	97
Developmental Behavior	0	0	0	0	0	1	0	1	2
Embryology	0	0	0	0	2	0	1	2	5
Hibernation	0	0	0	0	1	4	2	2	9
Morphology	0	0	0	0	0	0	1	1	2
Sociobiology, Social Relations	0	0	0	0	0	0	0	1	1
<b>Totals</b>	<b>1</b>	<b>1</b>	<b>2</b>	<b>3</b>	<b>49</b>	<b>56</b>	<b>42</b>	<b>62</b>	<b>216</b>

## Biology, General

	1900-1949	1950-1959	1960-1969	1970-1979	1980-1989	1990-1994	1995-1999	2000-2005	Totals
Biology, General	0	4	2	8	26	20	26	17	103
General Works, Treatises, Textbooks	0	0	0	1	5	1	4	6	17
Miscellany & Curiosa, Special Aspects, Convergence	0	0	0	0	3	1	0	0	4
Study & Teaching, Research, Laboratories	0	0	0	0	2	3	3	3	11
Textbooks	0	0	0	1	2	1	0	0	4
Works of Darwin	0	0	0	0	1	0	0	0	1
<b>Totals</b>	<b>0</b>	<b>4</b>	<b>2</b>	<b>10</b>	<b>39</b>	<b>26</b>	<b>33</b>	<b>26</b>	<b>140</b>

## Birds

	1900-1949	1950-1959	1960-1969	1970-1979	1980-1989	1990-1994	1995-1999	2000-2005	Totals
Africa	0	0	0	0	0	0	1	0	1
Anseriformes	0	0	0	0	13	3	4	3	23
Apodiformes - Apodidae, Hemiprocnidae	0	0	0	0	0	0	1	0	1
Bird Protection. Birdhouses, etc.	0	0	0	0	0	2	1	1	4
Birds	1	1	4	9	47	46	54	36	198
Birds - General Works, Treatises, Textbooks	0	0	2	1	5	1	0	0	9
Central America	0	0	0	0	1	0	0	0	1
Charadriiformes - Laridae, etc.	0	0	0	0	0	1	4	0	5
Ciconiiformes	0	0	0	0	1	2	3	1	7
Columbiformes	0	0	0	0	0	1	3	0	4
Coraciiformes	0	0	0	0	1	0	0	0	1
Cuculiformes	0	0	0	0	0	1	0	0	1
Falconiformes	0	0	0	0	10	9	6	7	32
Galliformes	0	0	0	0	2	1	3	0	6
Gaviiformes	0	0	0	0	2	1	0	0	3
Gruiformes	0	0	0	0	4	2	2	1	9
North America & United States, General Works	0	0	0	0	1	2	2	0	5
Passeriformes	0	0	0	0	3	6	6	1	16
Pelecaniformes	0	0	0	0	0	1	0	0	1
Physiology. Reproduction	0	0	0	0	0	1	0	0	1
Piciformes	0	0	0	0	1	0	2	2	5
Procellariiformes	0	0	0	0	0	1	0	1	2
Sphenisciformes	0	0	0	1	4	4	7	9	25
Strigiformes	0	0	0	1	1	6	1	3	12
Struthioniformes	0	0	0	0	0	2	0	1	3
Trogoniformes	0	0	0	0	1	0	0	0	1
United States - by Region	0	0	0	0	3	3	1	2	9
United States - by State	0	0	0	0	4	0	3	0	7
<b>Totals</b>	<b>1</b>	<b>1</b>	<b>6</b>	<b>12</b>	<b>104</b>	<b>96</b>	<b>104</b>	<b>68</b>	<b>392</b>

## Botany, General

	1900-1949	1950-1959	1960-1969	1970-1979	1980-1989	1990-1994	1995-1999	2000-2005	Totals
Botanical Illustration	0	0	0	0	0	0	1	1	2
Botany, General	2	0	3	5	18	17	13	12	70
Central America	0	0	0	0	0	0	0	1	1
Edible Plants	0	0	0	0	1	0	1	1	3
Europe	0	0	0	0	1	0	0	0	1
Medical Botany, General	0	0	0	2	1	0	0	1	4
North America, General	0	0	0	0	1	4	1	0	6
Pacific Islands	0	0	0	0	1	0	0	0	1
Plant Conservation, Rare Plants, Relict Plants	0	0	0	0	1	0	0	0	1
Plant Lore, National Plants	0	0	0	1	0	2	2	2	7
Poisonous Plants	0	0	0	0	1	5	0	0	6
Study & Teaching, Research	0	0	0	0	3	3	3	1	10
<b>Totals</b>	<b>2</b>	<b>0</b>	<b>3</b>	<b>12</b>	<b>31</b>	<b>34</b>	<b>26</b>	<b>19</b>	<b>127</b>

## Botany, Specific Fields

	1900-1949	1950-1959	1960-1969	1970-1979	1980-1989	1990-1994	1995-1999	2000-2005	Totals
Botany, Specific Fields	1	0	0	2	7	8	6	1	25
Cryptogams - Algae, Algology	0	0	0	0	1	0	0	0	1
Cryptogams - Musci, Mosses	0	0	0	0	1	0	0	0	1
Cryptogams - Pteridophyta, Ferns, etc.	0	1	0	0	1	0	0	0	2
Seed Plants - Angiosperms	0	0	0	1	13	6	8	6	34
Seed Plants - Gymnosperms	0	0	0	0	1	2	1	0	4
Seed Plants - Trees & Shrubs	0	1	0	1	4	9	8	0	23
<b>Totals</b>	<b>1</b>	<b>2</b>	<b>0</b>	<b>4</b>	<b>28</b>	<b>25</b>	<b>23</b>	<b>7</b>	<b>90</b>

## Chordates – Vertebrates

	1900-1949	1950-1959	1960-1969	1970-1979	1980-1989	1990-1994	1995-1999	2000-2005	Totals
Chordates - Vertebrates	0	0	0	0	1	1	1	0	3
Protochordata	0	0	0	0	0	1	0	0	1
<b>Totals</b>	<b>0</b>	<b>0</b>	<b>0</b>	<b>0</b>	<b>1</b>	<b>2</b>	<b>1</b>	<b>0</b>	<b>4</b>

## Cytology

	1900-1949	1950-1959	1960-1969	1970-1979	1980-1989	1990-1994	1995-1999	2000-2005	Totals
Cytology	0	0	0	0	1	2	2	4	9
Physiological Properties of Cells	0	0	0	0	1	0	0	0	1
Study & Teaching, Research Methods, Cell Culture	0	0	0	0	0	0	1	0	1
<b>Totals</b>	<b>0</b>	<b>0</b>	<b>0</b>	<b>0</b>	<b>2</b>	<b>2</b>	<b>3</b>	<b>4</b>	<b>11</b>

## Ecology

	1900-1949	1950-1959	1960-1969	1970-1979	1980-1989	1990-1994	1995-1999	2000-2005	Totals
Adaptations	0	0	0	0	0	1	0	1	2
Ecology	0	0	0	9	17	8	16	10	60
Ecology by Type of Environment	0	0	1	6	22	31	38	21	119
Influence of Special Factors in the Environment	0	0	0	1	1	3	1	1	7
Study & Teaching, Research	0	0	0	0	1	3	1	0	5
<b>Totals</b>	<b>0</b>	<b>0</b>	<b>1</b>	<b>16</b>	<b>41</b>	<b>46</b>	<b>56</b>	<b>33</b>	<b>193</b>

## Fishes

	1900-1949	1950-1959	1960-1969	1970-1979	1980-1989	1990-1994	1995-1999	2000-2005	Totals
Chondrichthyes, Cartilaginous Fishes	0	0	0	0	2	2	21	19	44
Fishes	0	0	0	1	4	9	9	2	25
Fishes - United States	0	0	1	0	1	0	1	0	3
Systematic Div. - Osteichthys, by Family	0	0	0	1	4	5	5	6	21
Systematic Div. - Osteichthys, by Order	0	0	0	0	1	1	1	0	3
<b>Totals</b>	<b>0</b>	<b>0</b>	<b>1</b>	<b>2</b>	<b>12</b>	<b>17</b>	<b>37</b>	<b>27</b>	<b>96</b>

## Genetics

	1900-1949	1950-1959	1960-1969	1970-1979	1980-1989	1990-1994	1995-1999	2000-2005	Totals
Genetic Engineering, Cloning	0	0	0	0	1	0	6	5	12
Genetics	0	0	0	4	11	8	11	11	45
History & Biography	0	0	0	0	2	2	0	1	5
Recombination Mechanisms	0	0	0	0	0	1	1	2	4
Study & Teaching, Research, Laboratories	0	0	0	0	0	1	0	0	1
<b>Totals</b>	<b>0</b>	<b>0</b>	<b>0</b>	<b>4</b>	<b>14</b>	<b>12</b>	<b>18</b>	<b>19</b>	<b>67</b>

## Invertebrates

	1900-1949	1950-1959	1960-1969	1970-1979	1980-1989	1990-1994	1995-1999	2000-2005	Totals
Arachnida, Scorpions, Spiders, Mites, etc.	0	0	0	0	7	7	10	16	40
Arthropoda	0	0	0	2	4	5	7	0	18
Coelenterata, Cnidaria	0	0	0	0	3	1	1	4	9
Coleoptera, Beetles	0	0	0	0	8	0	6	3	17
Crustacea	0	0	0	0	6	4	7	2	19
Diptera, Flies	0	0	0	0	3	2	2	0	7
Enchinodermata	0	0	0	0	0	0	3	0	3
Hemiptera, Heteroptera, Bugs	0	0	0	0	1	0	1	0	2
Homoptera, Aphids, Cicadas, etc.	0	0	0	0	1	0	0	0	1
Hymenoptera, Ants, Bees, Wasps, etc.	0	0	0	0	13	7	14	13	47
Insects, General	0	0	0	1	9	15	17	13	55
Invertebrates	0	0	0	0	13	8	14	11	46
Lepidoptera, Butterflies, Moths	0	0	0	0	13	10	23	13	59
Mollusca	0	0	1	1	8	7	20	6	43
Orthoptera, Grasshoppers, Locusts, etc.	0	0	0	0	5	2	5	4	16
Porifera, Sponges	0	0	0	0	0	0	1	1	2
Worms & Other Vermiform Invertebrates	0	0	0	0	3	1	4	5	13
<b>Totals</b>	<b>0</b>	<b>0</b>	<b>1</b>	<b>4</b>	<b>97</b>	<b>69</b>	<b>135</b>	<b>91</b>	<b>397</b>

## Mammals

	1900-1949	1950-1959	1960-1969	1970-1979	1980-1989	1990-1994	1995-1999	2000-2005	Totals
Carnivora - Canidae, Dogs	0	0	0	0	0	0	2	1	3
Carnivora - Felidae, Cats	0	0	0	0	0	1	0	0	1
Carnivora - Ursidae, Bears	0	0	0	0	0	0	1	0	1
Carnivora, General	0	0	0	0	6	2	5	5	18
Cetacea, Dolphins, Whales	0	0	0	2	9	11	12	18	52
Chiroptera	0	0	0	0	0	1	1	0	2
Edentata, Zenartha	0	0	0	0	2	1	2	0	5
Hyracoidea	0	0	0	0	0	0	1	0	1
Insectivora	0	0	0	0	1	0	1	0	2
Lagomorpha	0	0	0	0	3	1	0	1	5
Mammals	0	1	4	6	101	108	161	111	492
Marsupialia, Kangaroos, etc.	0	0	0	0	3	5	4	4	16
Monotremata	0	0	0	0	0	1	1	0	2
Perissodactyla, Odd-toed Ungulates - Equidae, etc.	0	0	0	0	5	1	3	1	10
Pinnipedia, Seals, Walruses	0	0	0	0	4	4	0	2	10
Primates, except Humans	0	0	0	0	12	8	13	9	42
Proboscidea	0	0	0	0	5	11	8	5	29
Rodentia	0	0	0	0	13	4	11	6	34
Sirenia	0	0	0	0	0	2	2	1	5
Ungulata, General Works	0	0	0	1	0	0	0	0	1
United States - by Region	0	0	0	0	4	2	1	0	7
<b>Totals</b>	<b>0</b>	<b>1</b>	<b>4</b>	<b>9</b>	<b>168</b>	<b>163</b>	<b>229</b>	<b>164</b>	<b>738</b>



## Microbiology

	1900-1949	1950-1959	1960-1969	1970-1979	1980-1989	1990-1994	1995-1999	2000-2005	Totals
History & Biography	0	0	0	0	2	2	0	4	8
Immunology, General	0	0	0	0	6	1	0	2	9
Microbiology	0	0	0	0	1	8	3	5	17
Pathogenic Microorganisms by Disease	0	0	0	0	0	0	0	3	3
Textbooks, General Works	0	0	0	0	1	0	0	0	1
Types of Immunity, Immune Structures	0	0	0	0	0	1	2	1	4
Vaccines	0	0	0	0	0	1	0	1	2
<b>Totals</b>	<b>0</b>	<b>0</b>	<b>0</b>	<b>0</b>	<b>10</b>	<b>13</b>	<b>5</b>	<b>16</b>	<b>44</b>

## Microscopy

	1900-1949	1950-1959	1960-1969	1970-1979	1980-1989	1990-1994	1995-1999	2000-2005	Totals
Microscopic Observations	0	0	0	0	0	1	0	0	1
Microscopy	0	0	0	0	1	1	0	1	3
<b>Totals</b>	<b>0</b>	<b>0</b>	<b>0</b>	<b>0</b>	<b>1</b>	<b>2</b>	<b>0</b>	<b>1</b>	<b>4</b>

## Natural History

	1900-1949	1950-1959	1960-1969	1970-1979	1980-1989	1990-1994	1995-1999	2000-2005	Totals
Africa	0	0	0	1	4	0	2	1	8
Asia	0	0	0	1	3	1	1	0	6
By Regions, e.g. Arctic	0	0	0	0	1	2	2	1	6
Central America	0	0	0	0	3	1	0	0	4
Europe	0	0	1	1	2	1	0	0	5
Freshwater Biology, Limnology	0	0	1	0	1	1	1	1	5
General Works, Treatises, Advanced Textbooks	0	0	0	1	0	0	0	1	2
History & Biography	3	0	0	8	19	14	9	6	59
Indian Ocean Islands	0	0	0	0	0	0	1	0	1
Land	0	0	0	2	4	4	2	5	17
Museums, Exhibitions	0	0	0	0	2	0	0	0	2
Natural History	0	0	4	4	60	36	30	15	149
Nature Conservation, Landscape Protection	0	0	0	2	9	9	7	2	29
North America	1	2	1	6	25	26	25	9	95
Pacific Islands	0	0	0	1	1	5	2	1	10
South America	0	0	0	0	2	3	1	0	6
Study & Teaching, Research	0	0	2	0	4	1	2	1	10
Water, Aquatic Biology, Shore Biology, Marine Biol	0	0	2	3	8	4	3	6	26
Works of and About Linnaeus, General	0	0	0	0	1	0	0	0	1
<b>Totals</b>	<b>4</b>	<b>2</b>	<b>11</b>	<b>30</b>	<b>149</b>	<b>108</b>	<b>88</b>	<b>49</b>	<b>441</b>

### Plant Anatomy

	1900-1949	1950-1959	1960-1969	1970-1979	1980-1989	1990-1994	1995-1999	2000-2005	Totals
Plant Anatomy	0	0	0	0	0	1	0	0	1
Reproductive Organs	0	0	0	0	1	1	2	4	8
Vegetative Organs	0	0	0	0	2	2	5	5	14
<b>Totals</b>	<b>0</b>	<b>0</b>	<b>0</b>	<b>0</b>	<b>3</b>	<b>4</b>	<b>7</b>	<b>9</b>	<b>23</b>

### Plant Ecology

	1900-1949	1950-1959	1960-1969	1970-1979	1980-1989	1990-1994	1995-1999	2000-2005	Totals
Plant Adaptation	0	0	0	0	0	0	2	0	2
Plant Ecology	0	0	0	0	2	2	3	1	8
Reproductive Interrelation	0	0	0	0	3	2	2	0	7
<b>Totals</b>	<b>0</b>	<b>0</b>	<b>0</b>	<b>0</b>	<b>5</b>	<b>4</b>	<b>7</b>	<b>1</b>	<b>17</b>

### Plant Physiology

	1900-1949	1950-1959	1960-1969	1970-1979	1980-1989	1990-1994	1995-1999	2000-2005	Totals
Plant Physiology	0	0	0	0	4	5	2	2	13
Plant Reproduction	0	0	0	0	0	1	0	0	1
<b>Totals</b>	<b>0</b>	<b>0</b>	<b>0</b>	<b>0</b>	<b>4</b>	<b>6</b>	<b>2</b>	<b>2</b>	<b>14</b>

### Reproduction & Life

	1900-1949	1950-1959	1960-1969	1970-1979	1980-1989	1990-1994	1995-1999	2000-2005	Totals
Bioenergetics, Bioacoustics	0	0	0	0	0	0	0	1	1
Reproduction & Life	0	0	0	0	2	4	9	2	17
<b>Totals</b>	<b>0</b>	<b>0</b>	<b>0</b>	<b>0</b>	<b>2</b>	<b>4</b>	<b>9</b>	<b>3</b>	<b>18</b>

### Reptiles & Amphibians

	1900-1949	1950-1959	1960-1969	1970-1979	1980-1989	1990-1994	1995-1999	2000-2005	Totals
Central America, West Indies	0	0	0	0	0	0	1	0	1
Chelonia, Testudinata, Turtles	0	0	0	0	0	1	3	6	10
Crocodylia, Crocodylians	0	0	0	0	5	8	5	4	22
Ecuadata, Anura, Salientia, Frogs, Toads	0	0	0	0	2	0	2	1	5
Lacertilia, Sauria, Lizards	0	0	0	0	3	3	13	2	21
Reptiles & Amphibians	0	0	0	1	24	36	36	29	126
<b>Totals</b>	<b>0</b>	<b>0</b>	<b>0</b>	<b>1</b>	<b>34</b>	<b>48</b>	<b>60</b>	<b>42</b>	<b>185</b>

## Zoology, General

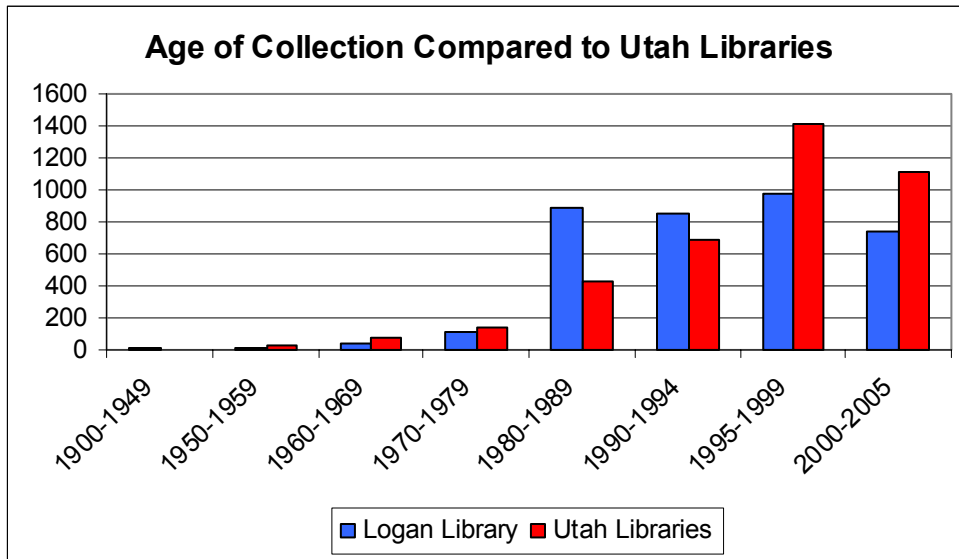
	1900-1949	1950-1959	1960-1969	1970-1979	1980-1989	1990-1994	1995-1999	2000-2005	Totals
Africa	0	0	0	1	5	1	2	3	12
Asia	0	0	0	0	0	0	1	0	1
Australia	0	0	0	0	2	0	0	0	2
Biography	2	0	1	1	11	6	3	7	31
Canada	0	0	0	0	0	1	0	0	1
Collecting & Preservation	0	0	0	0	2	1	0	0	3
Coral Reefs	0	0	0	0	0	0	0	1	1
Extinct Animals. Cryptozoology	0	0	0	3	6	3	1	3	16
Islands, Forests, Mountains	0	0	0	0	3	1	3	4	11
Laboratories, Museums, Zoological Gardens	0	0	0	0	7	6	1	4	18
Lakes. Ponds	0	0	0	0	0	2	0	2	4
Ocean, General	0	0	0	0	7	6	7	10	30
Pacific Islands	0	0	0	0	0	2	0	2	4
Pictorial Atlases, Textbooks, Juvenile & Popular	0	0	0	1	16	15	29	15	76
Polar Regions	0	0	0	0	1	0	1	2	4
Soil	0	0	0	0	0	1	0	0	1
Study & Teaching, Research Problems, Exercises	0	0	0	0	0	5	0	2	7
United States	0	0	0	0	1	3	1	4	9
Wetlands	0	0	0	0	1	1	0	0	2
Wildlife Attracting & Watching	0	0	0	0	0	1	3	0	4
Wildlife Conservation. Rare Animals	0	0	0	1	7	21	9	7	45
Zoology, General	0	0	0	1	25	34	26	34	120
<b>Totals</b>	<b>2</b>	<b>0</b>	<b>1</b>	<b>8</b>	<b>94</b>	<b>110</b>	<b>87</b>	<b>100</b>	<b>402</b>

## Comparison to Utah Libraries

The following table shows how the biological sciences collection in the Logan Library compares to the combined biological sciences collections of the following Utah libraries:

- Murray Public Library
- Tooele City Public Library
- Washington County Library

	1900-1949	1950-1959	1960-1969	1970-1979	1980-1989	1990-1994	1995-1999	2000-2005	Other	Totals
Logan Library	11	11	32	115	889	850	972	743	0	3623
Utah Libraries	6	23	80	141	423	692	1412	1114	1	3892



### Unique Titles

	Unique	Shared	Totals
Logan Library	2760	863	3623
Utah Libraries	3029	863	3892

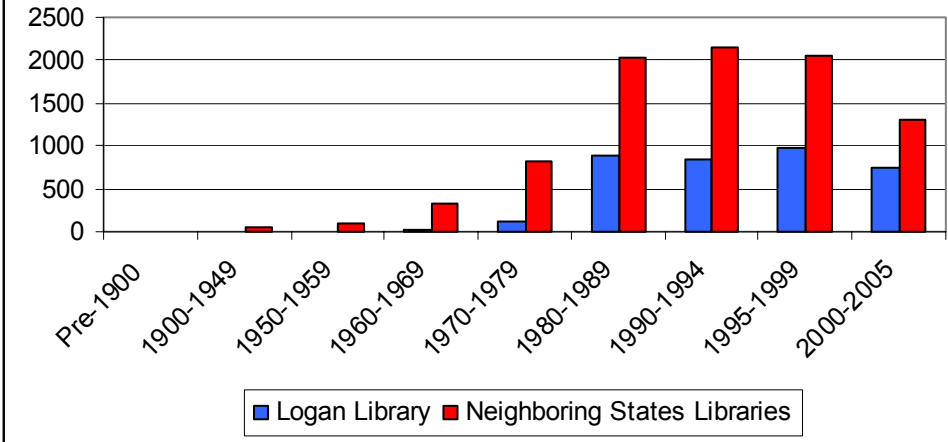
## Comparison to Libraries in Neighboring States

The following table shows how the biological sciences collection in the Logan Library compares to the combined biological sciences collections of the following libraries from neighboring states:

- Ada Community Library, Boise, ID
- Carson City Library, NV
- Garfield County Public Library, CO
- Nogales-Santa Cruz County Public Library, AZ
- Sweetwater County Library System, WY

	Pre-1900	1900-1949	1950-1959	1960-1969	1970-1979	1980-1989	1990-1994	1995-1999	2000-2005	Other	Totals
Logan Library	0	11	11	32	115	889	850	972	743	0	<b>3623</b>
Neighboring States Libraries	2	54	90	327	811	2026	2160	2067	1308	1	<b>8846</b>

### Age of Collection Compared to Libraries in Neighboring States



### Unique Titles

	Unique	Shared	Totals
Logan Library	1810	1813	3623
Neighboring States Libraries	7033	1813	8846

# LOGAN LIBRARY BOARD 2005

Chair  
Ann Herron  
Sherry Funke  
Mark Fjeldsted  
Blythe Ahlstrom  
Susan Jaggi  
Mary Anderson

## LOGAN LIBRARY STAFF

Director Ronald Jenkins

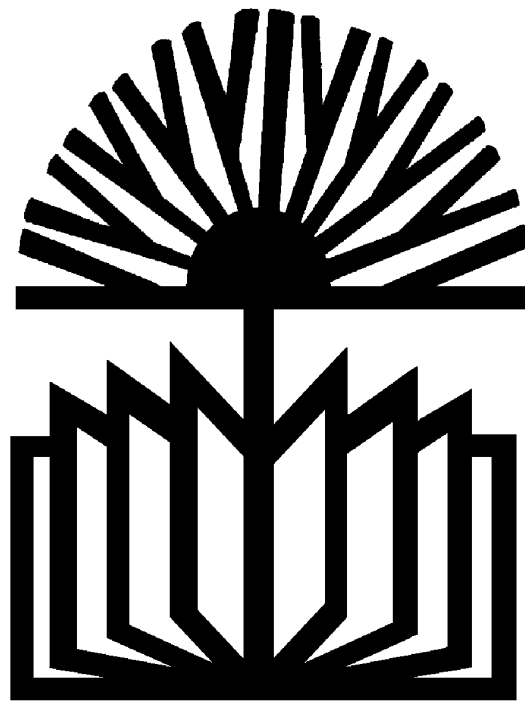
Senior Librarian Janet Fiesinger

Librarians  
Karen Clark  
Kara Huggard  
Melanie Liechty  
Patricia Record  
Becky Smith

Associate Librarians  
Jerry Anderson  
Michelle Olsen

Library Technical Assistants  
Ann Calvert  
Lindsey Cannon  
Laura Dial  
Katrina Farrow  
Allison Hancey  
Katie Jaggi  
Marie Kangas  
Bron Logan  
Julie Miller  
Debbie Ogilvie  
Sarah Pincock  
Barbara Price  
Stefanie Rieben  
Kari Yurth

Library Pages  
Kelsie Congdon  
Shari Lundstrom  
Sharol Sorensen



# **THE LOGAN LIBRARY**

255 North Main, Logan, Utah 84321 (435) 716-9132

Hours: Mon. - Thurs.: 10:00 a.m. - 9:00 p.m.

Fri. - Sat.: 10:00 a.m. - 6:00 p.m.

<http://library.loganutah.org>