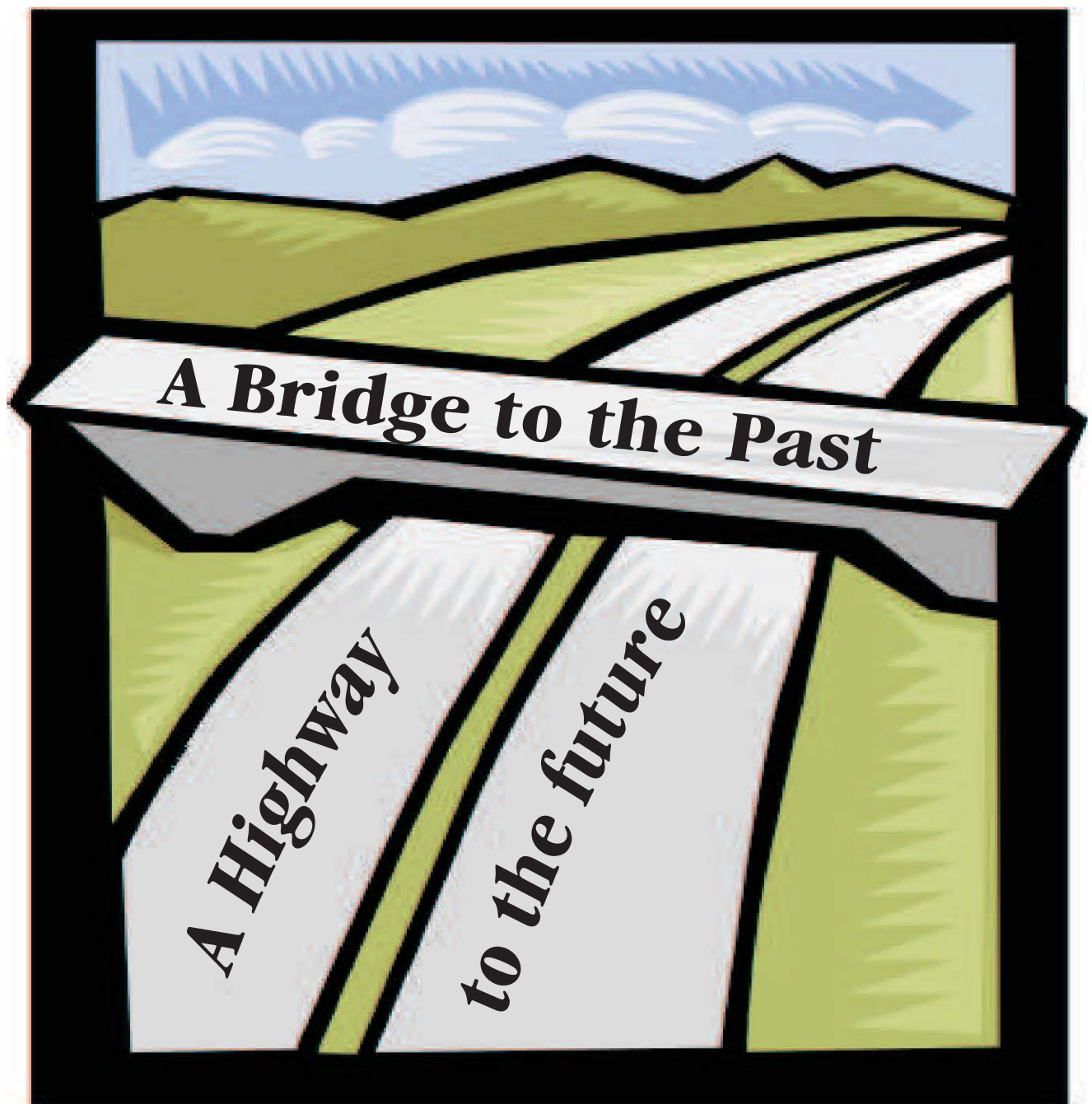


The Logan Library Annual Report 2007



Logan Library Annual Report 2007

Throughout 2007 the library has continued to analyze and develop its collections and services in order to ensure high quality resources and services for the public. This ongoing analysis of library services, by the library board and the library staff, is reflecting changes in how the public uses the library and of the public's changing expectations of what the collections and services provided by the library should be.

During 2007 the library staff completed the update of the library's home page to reflect current trends and demands for information from the public. These changes included easier access to databases, online full text e-books, and downloadable audio books, and enhanced searching and access to the book collections. The changes also include improved access to current statistical information about the community, comprehensive information about events occurring in Logan, and an increasing number of interactive pages for the public seeking information.

Summary of Statistics 2007:

Circulation:	774,367
Interlibrary loans:	11,084
Reference questions:	40,754
Online visits:	765,733
Visitors to library:	248,753
Items in collection:	180,279

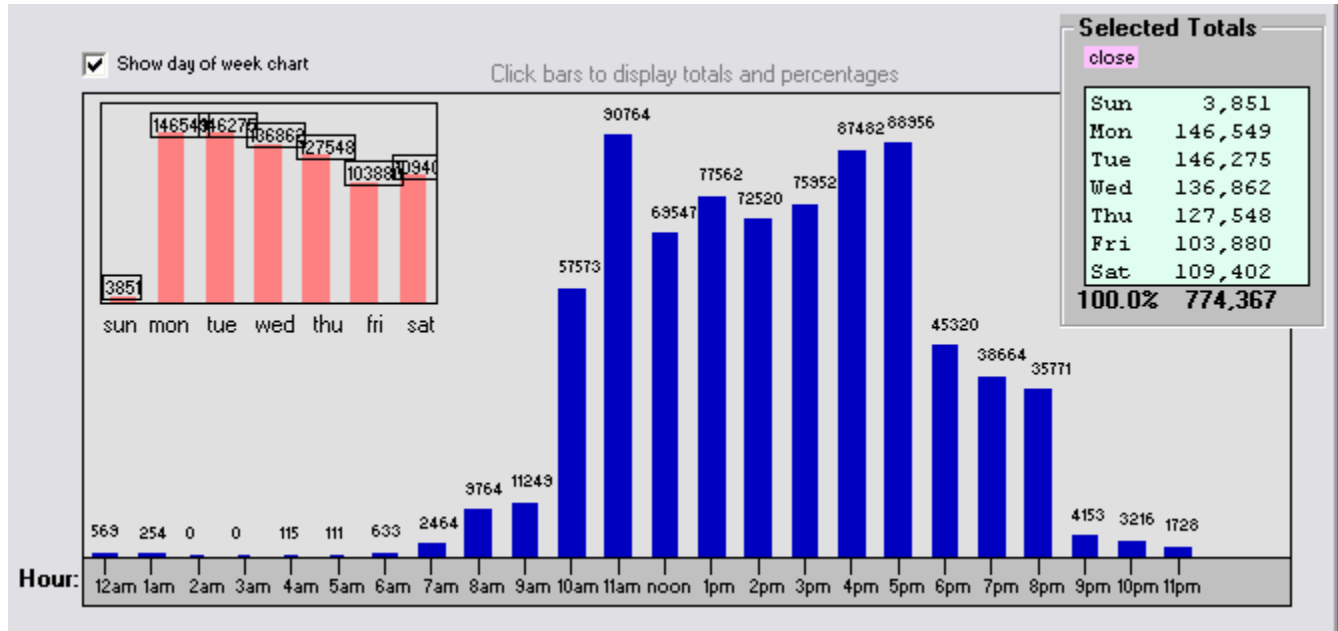
**Logan Library
Annual Report
2007**

Selected Performance Measures

Logan Library Performance Measure

2007 Circulation

Based on Charges in Workflows and Renewals in both Workflows and iBistro



2007 Transactions

5,698	AV -- Add Item (Vol/call#/s,copies)
2,129	BY -- Bill User
253	Cd -- Mark Item Lost
633,720	CV -- Charge Item
631,841	EV -- Discharge Item (Checkin)
18,024	FV -- Remove Item (Title/call#/copy)
6,253	FY -- Remove User (Patron/staff)
67,013	FZ -- Remove Hold (Remove hold)
3,341	Ju -- Create Request (Patron request)
2,446	JV -- Create Item (Title/call#/copy)
4,888	JY -- Create User (Patron or staff)
76,797	JZ -- Create Hold (Place a hold)
17	KV -- Duplicate Item
962	KY -- Duplicate User (Copy existing)
40	OY -- Transfer Item (to another libr)
91,977	PY -- Pay User (Paying user bill)
65,127	RV -- Renew Item (In Library at Circ)
75,520	RY -- Renew User (iBistro)
697	Wi -- Use Gateway (Use gateway eleme)

Doubleclick to show Data Codes

1,686,741 Transaction Codes

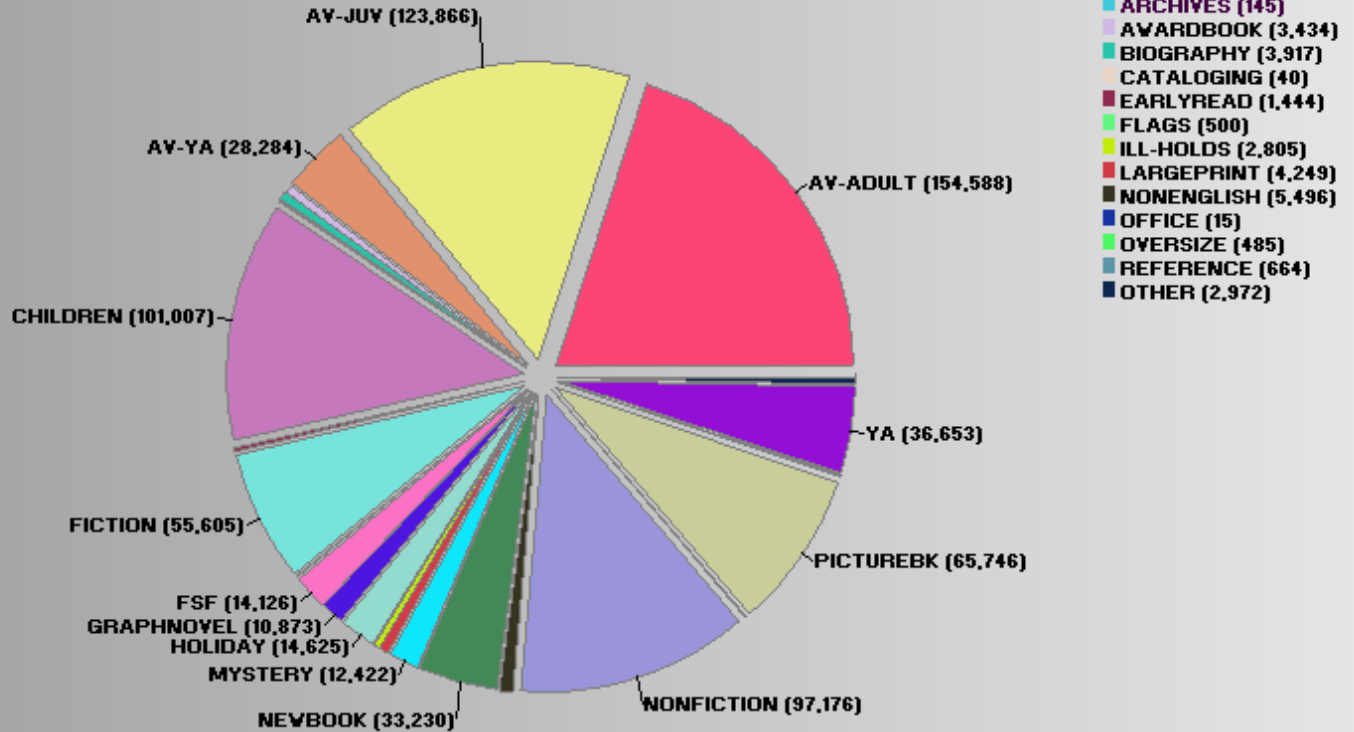
1,686,743 TOTAL

Logan Library Performance Measure

2007 Circulation

Based on Charges in Workflows and Renewals in both Workflows and iBistro

CallStat



Totals

File: C:\Documents and Settings\logancity\My Documents\DailyTransactions\stat\2007\2007.stat
 Dates: 1/1/2007 to 12/31/2007
 Codes: CV RY RY ; Transactions: 774,367

TOTAL by Home Location

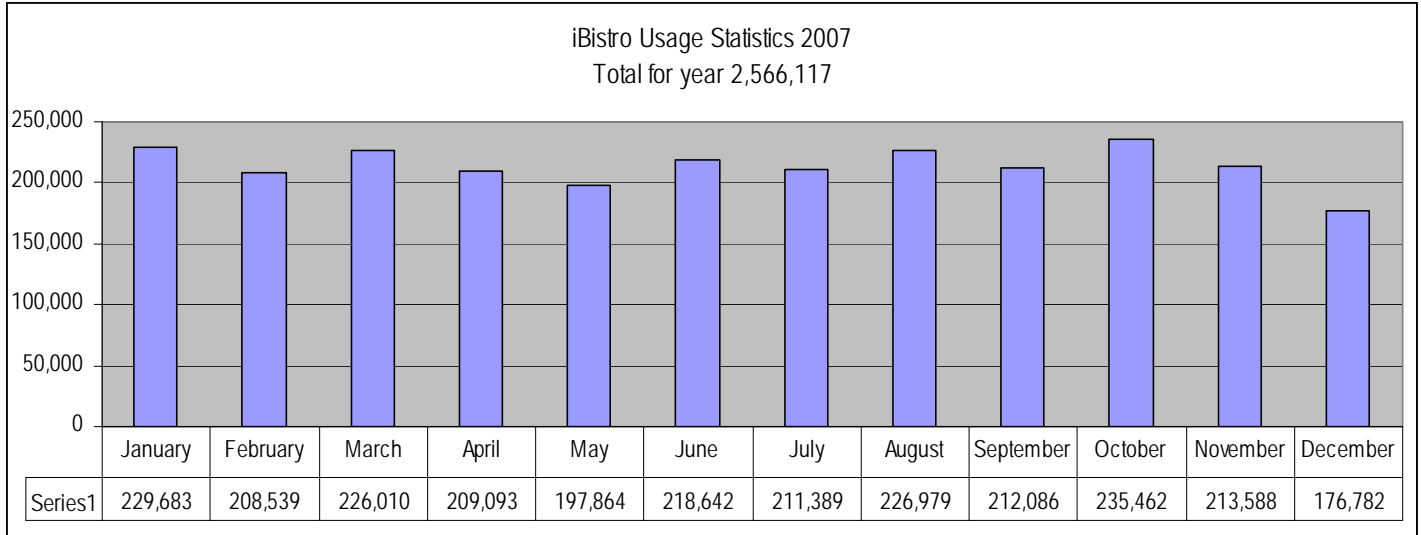
Jan-66,391	Feb-59,283	Mar-66,734	Apr-60,172	May-61,083	Jun-69,607
CV: 55,470 RY: 5,238 RY: 5,683	CV: 48,331 RY: 5,065 RY: 5,887	CV: 54,452 RY: 5,857 RY: 6,425	CV: 48,452 RY: 5,387 RY: 6,333	CV: 49,651 RY: 5,206 RY: 6,226	CV: 58,589 RY: 5,257 RY: 5,761
Jul-69,480	Aug-67,791	Sep-62,813	Oct-70,001	Nov-62,781	Dec-58,231
CV: 57,070 RY: 6,079 RY: 6,331	CV: 56,517 RY: 5,234 RY: 6,040	CV: 51,735 RY: 4,936 RY: 6,142	CV: 57,024 RY: 5,791 RY: 7,186	CV: 50,344 RY: 5,512 RY: 6,925	CV: 46,085 RY: 5,565 RY: 6,581
All-774,367 CV: 633,720 RY: 65,127 RY: 75,520					

Total Circulation 774,367

CV: Total Charges
 RV: Total Inhouse Renewals
 RY: Total Renewals iBistro

**Logan Library
Performance Measure**

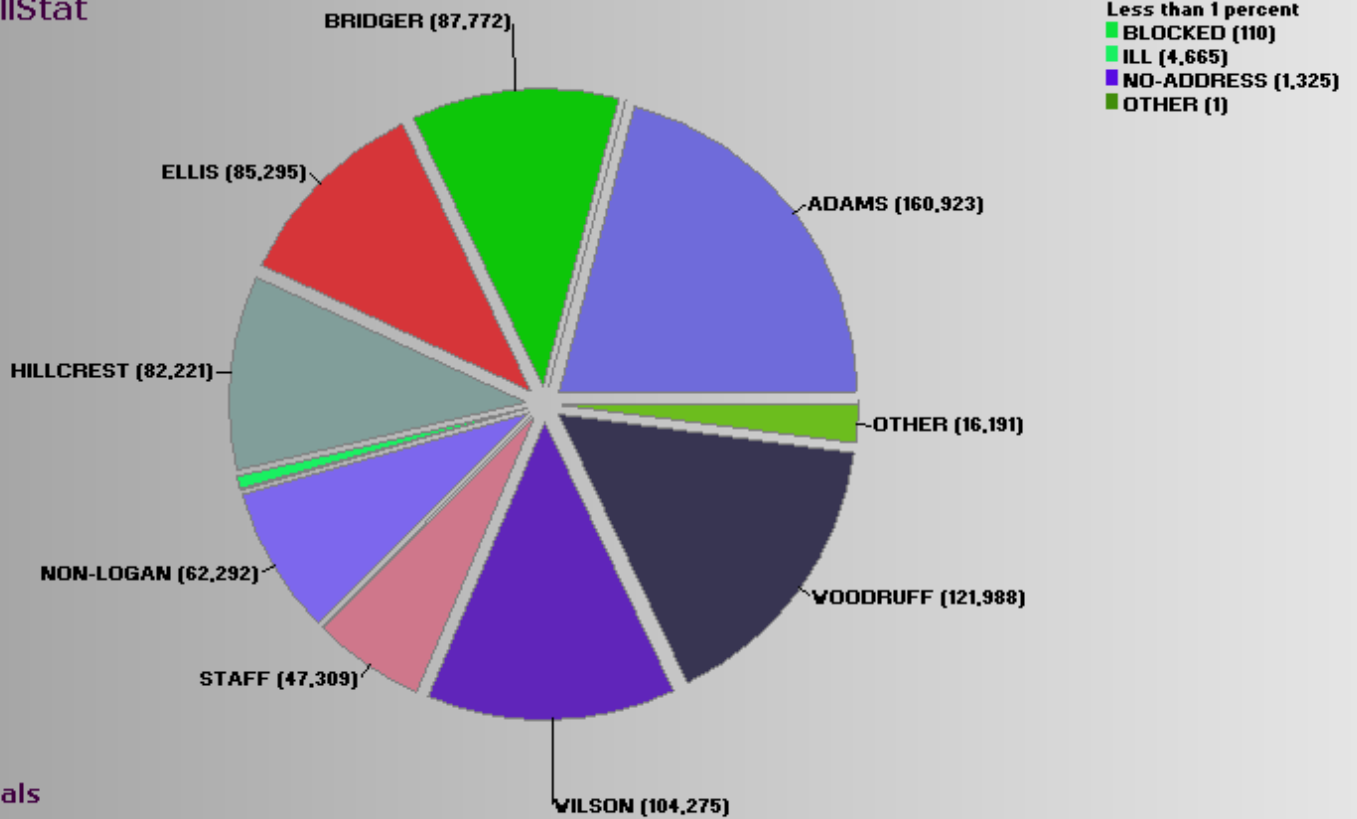
iBistro Usage Statistics – 2007



Logan Library Performance Measure

Circulation by Neighborhood – 2007

CallStat

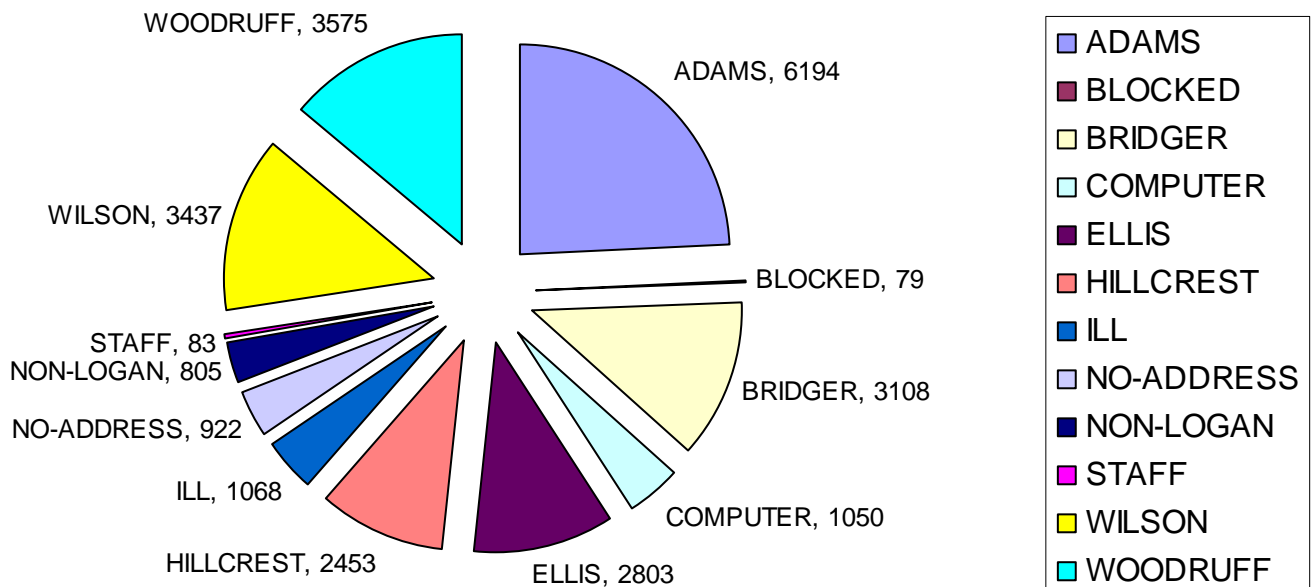


Totals

File: C:\Documents and Settings\logacity\My Documents\DailyTransactions\stat\2007\2007.stat
 Dates: 1/1/2007 to 12/31/2007
 Codes: CV RV RY ; Transactions: 774,367

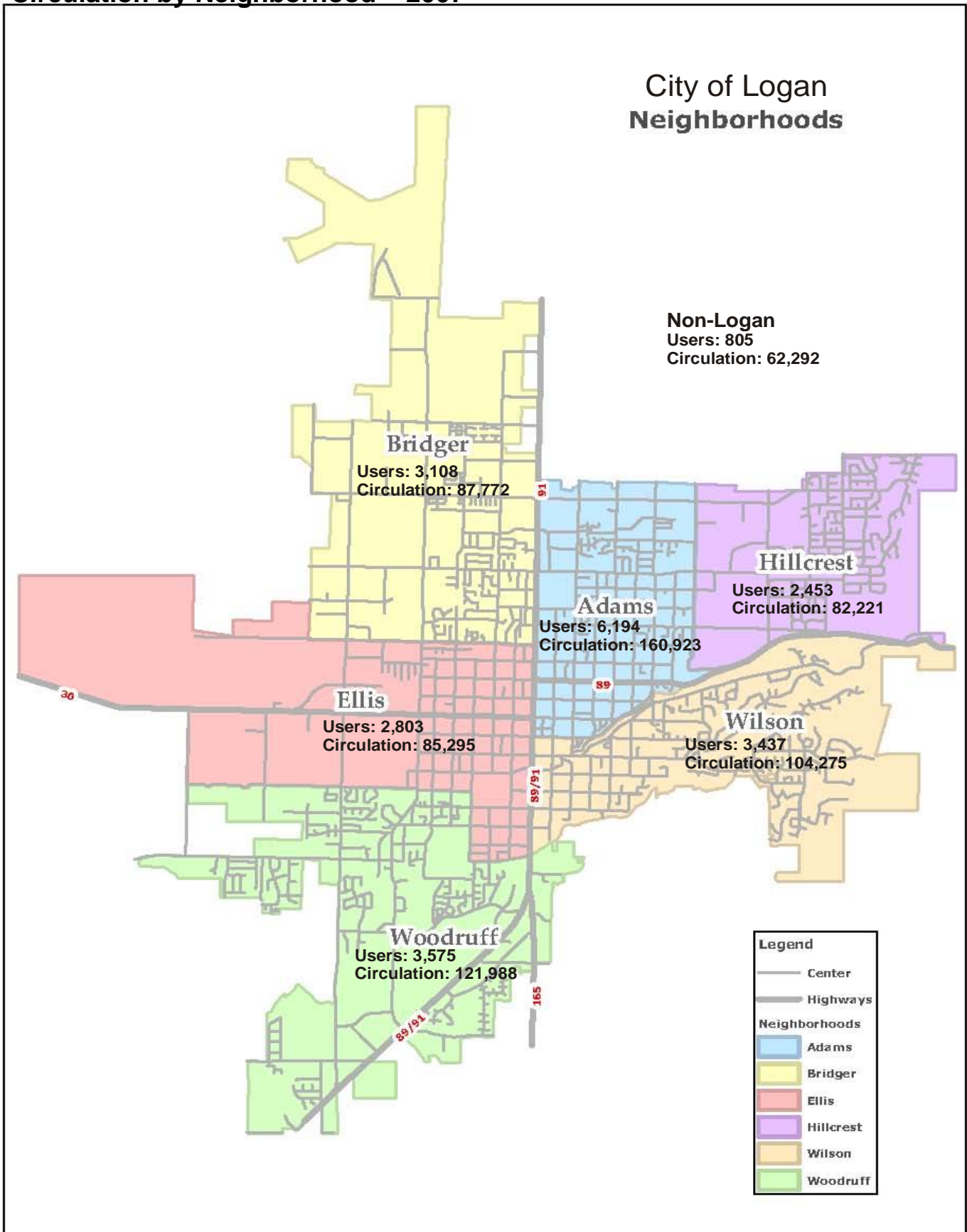
TOTAL by User Category 2

Number of Library Users by Neighborhood - Total 25577



Logan Library Performance Measure

Circulation by Neighborhood – 2007

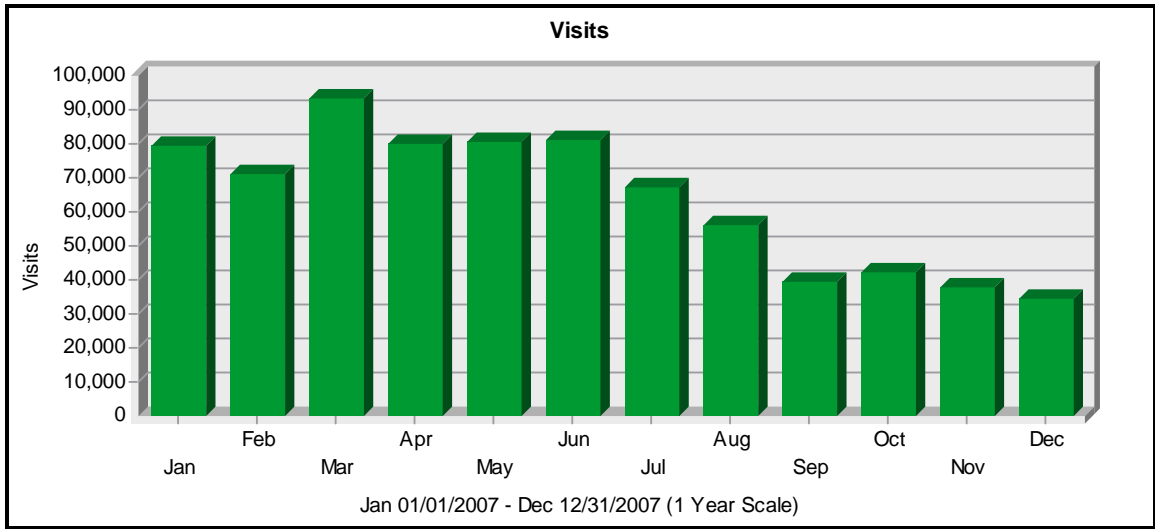


Logan Library Performance Measure

WebPage Usage Statistics – 2007

General Statistics

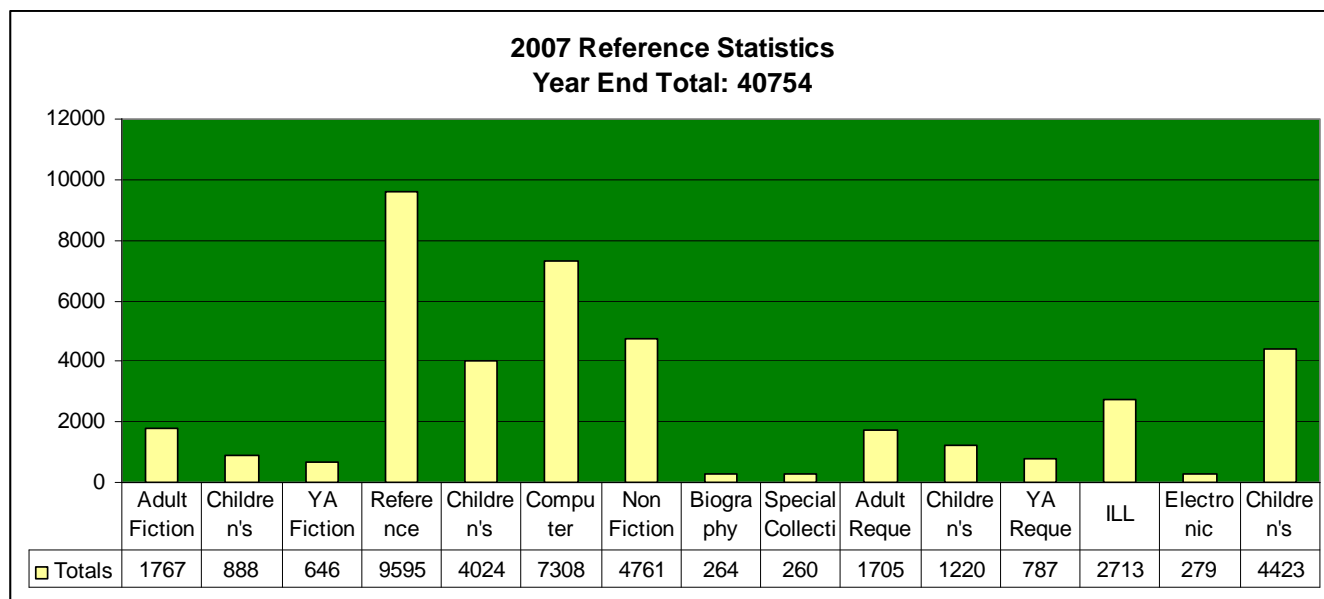
The Visits graph displays the overall number of visits to your Web site. The General Statistics table provides an overview of the activity for your Web site during the specified time frame.



General Statistics - Report Range: 01/01/2007 00:00:00 - 12/31/2007 23:59:59		
Hits	Entire Site (Successful)	9,973,346
	Average per Day	27,324
	Home Page	445,015
Page Views	Page Views	4,234,732
	Average per Day	11,602
	Average per Unique Visitor	24
	Document Views	3,635,289
Visits	Visits	765,633
	Average per Day	2,097
	Average Visit Length	00:20:21
	Median Visit Length	00:00:06
	International Visits	6.31%
	Visits of Unknown Origin	11.34%
	Visits from United States	82.34%
	Visits Referred by Search Engines	159,152
	Visits from Spiders	248,712
Visitors	Unique Visitors	173,640
	Visitors Who Visited Once	140,529
	Visitors Who Visited More Than Once	33,111

Logan Library Performance Measures

2007 Annual Reference Statistics

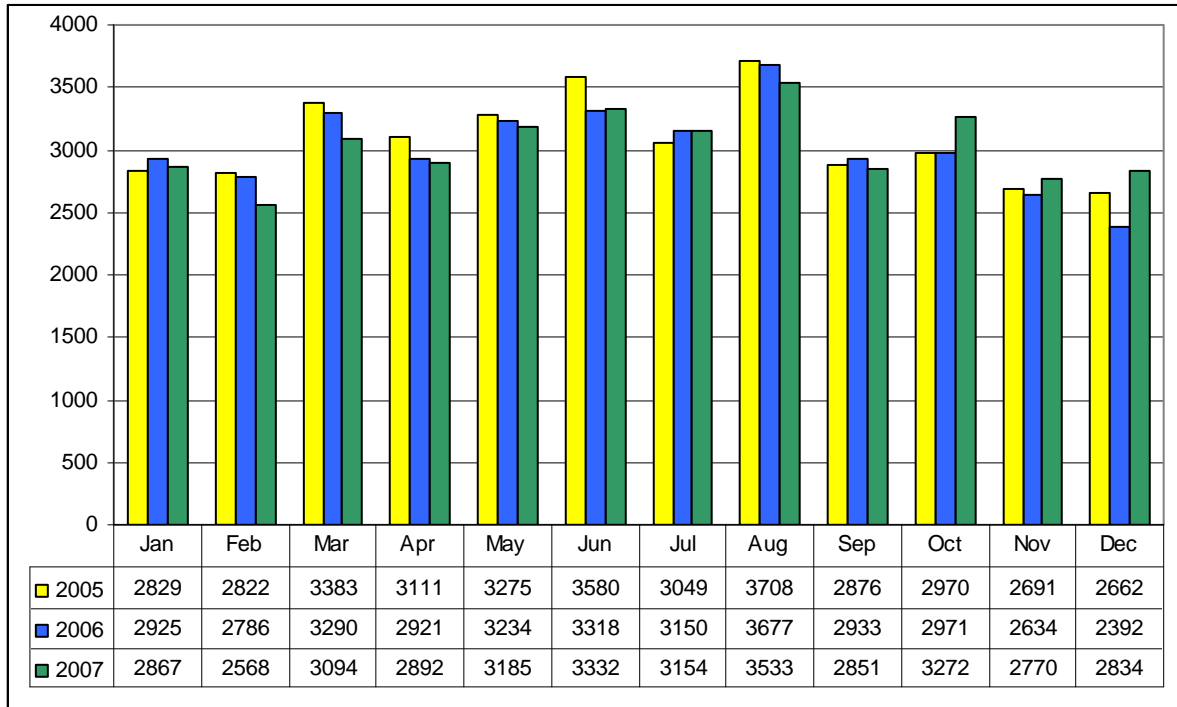


Totals

Adult Fiction	1767
Children's Fiction	888
YA Fiction	646
Reference Services	9595
Children's Reference Ser	4024
Computer Services	7308
Non Fiction	4761
Biography	264
Special Collections Visitors	260
Adult Requests	1705
Children's Requests	1220
YA Requests	787
ILL	2713
Electronic Reference	279
Children's Readers Ad	4423
Total	40754

Logan Library Performance Measure

Number of Computer Reservations



Total Usage

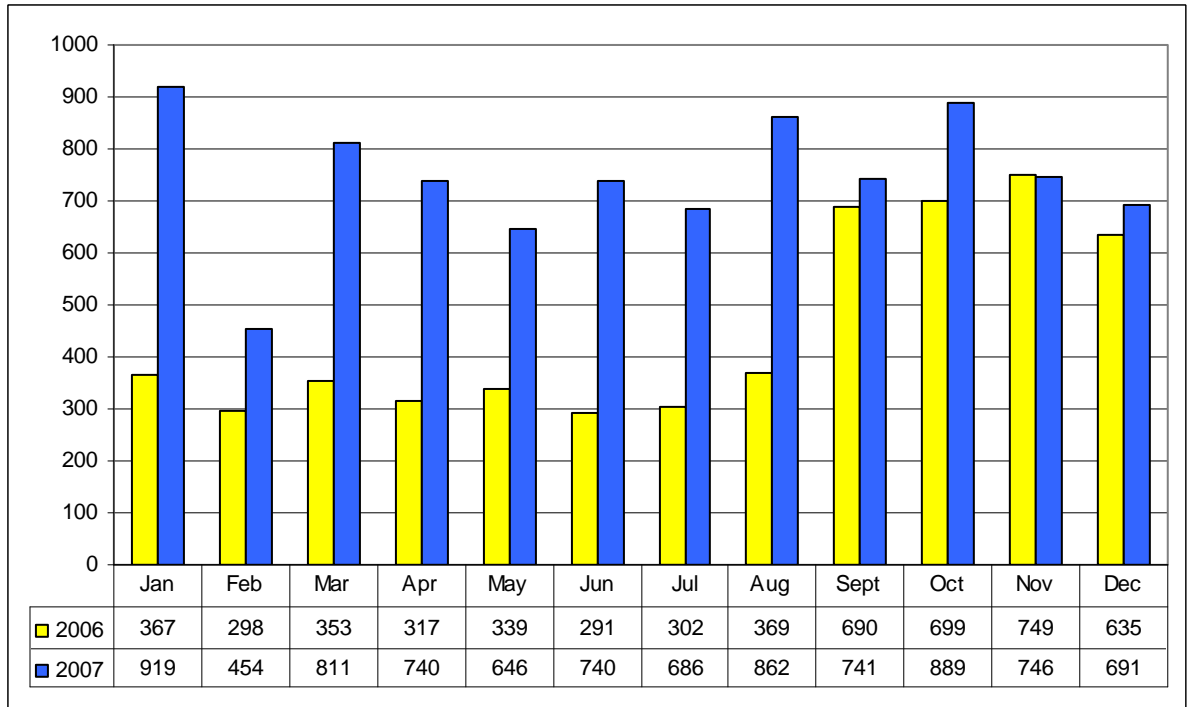
2005: 36,956

2006: 36,231

2007: 36,352

Logan Library Performance Measure

Reference Database Usage



Total Usage

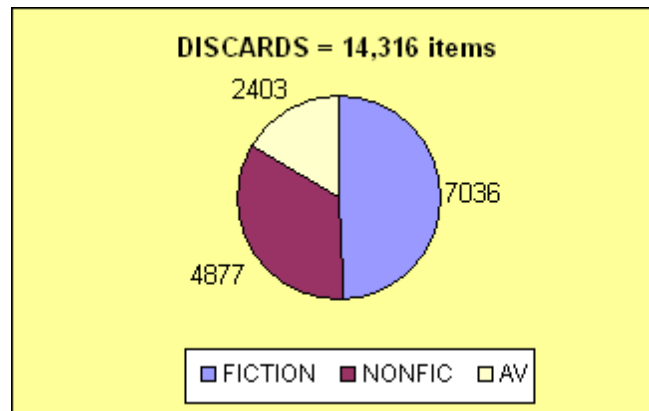
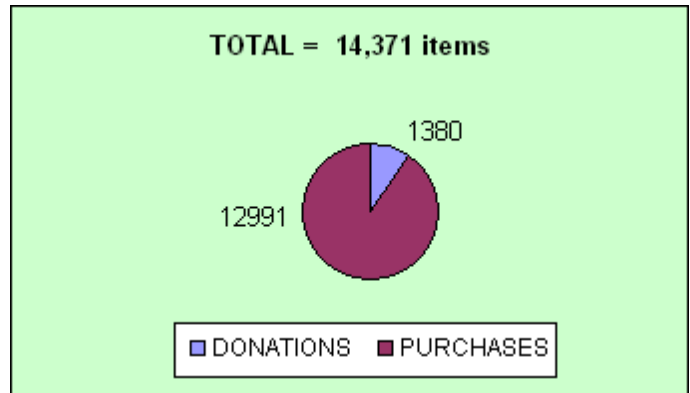
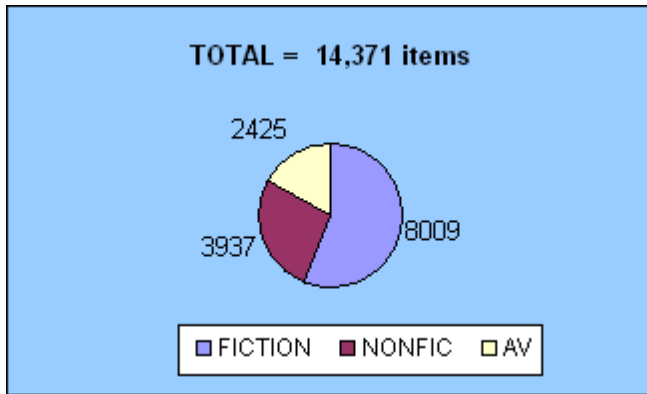
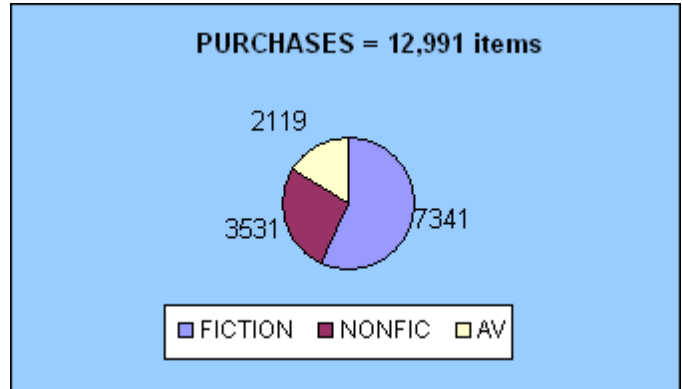
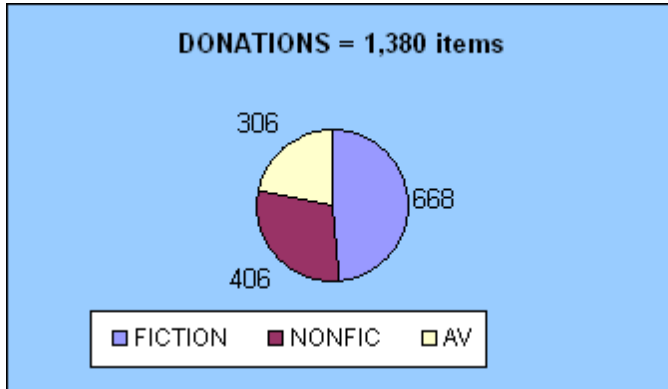
2006: 5409

2007: 8925

Logan Library Performance Measure

Technical Processing Statistics

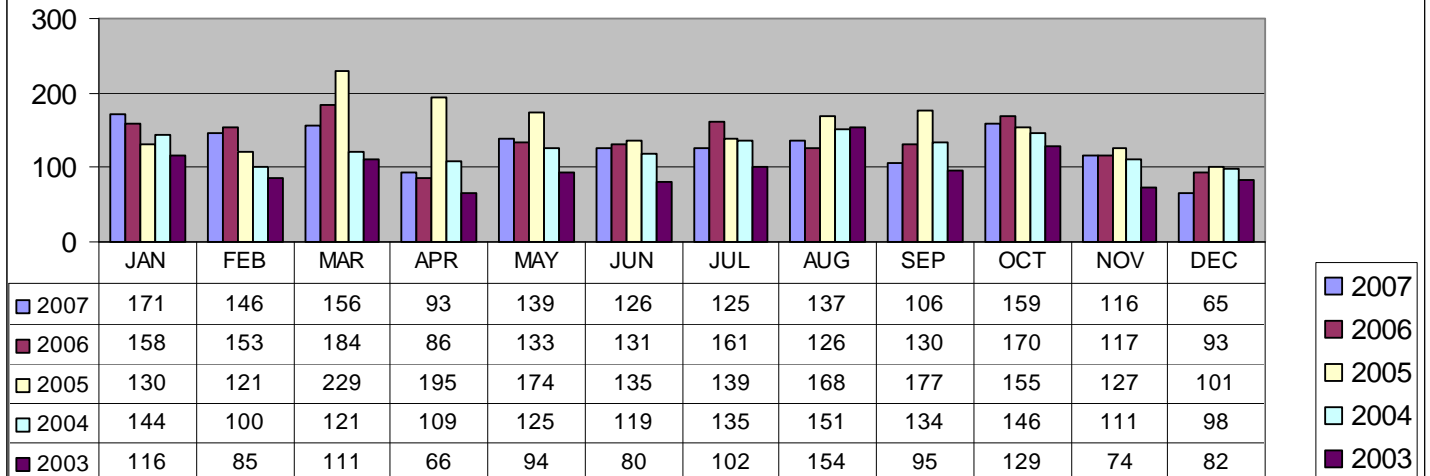
Acquisitions, discards, and total holdings



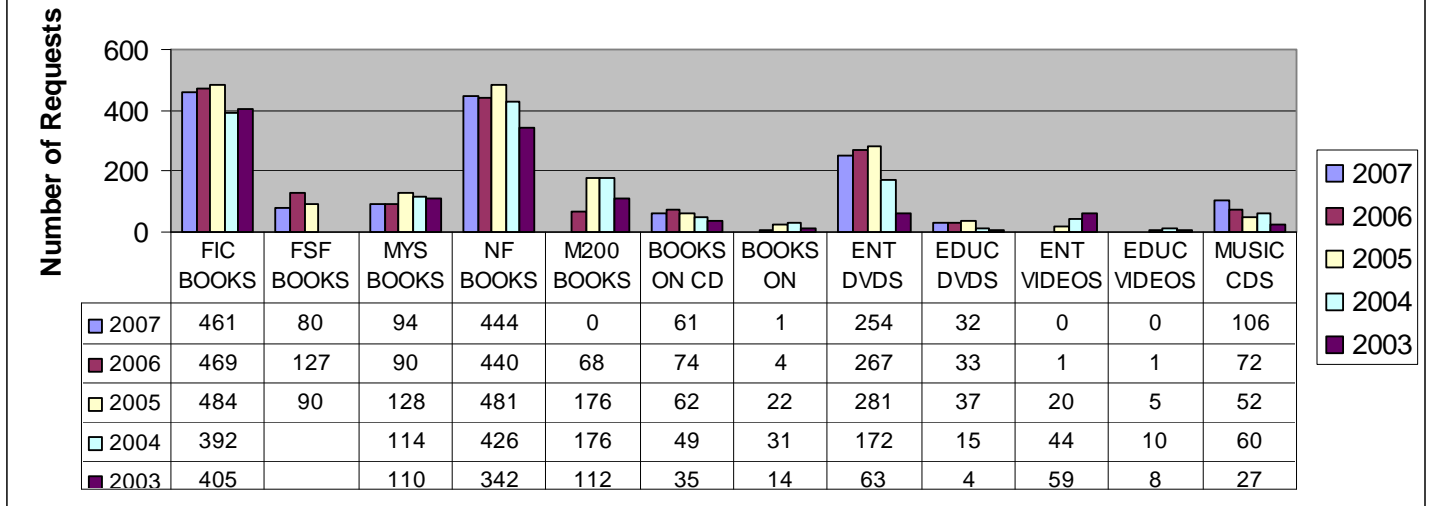
Added in 2007 9,056 titles 14,371 items
 Added in 2007 478 netlibrary + 354 e-audio = 832 e-resources
 Items in collection = 180,279*
 Titles in collection = 137,353*
 *includes 13,015 e-resources
 E-resources = 11,218 netlibrary + 1797 e-audio = 13,015

PRINT AND ELECTRONIC REQUESTS FOR TITLES TO BE PURCHASED FOR ADULTS

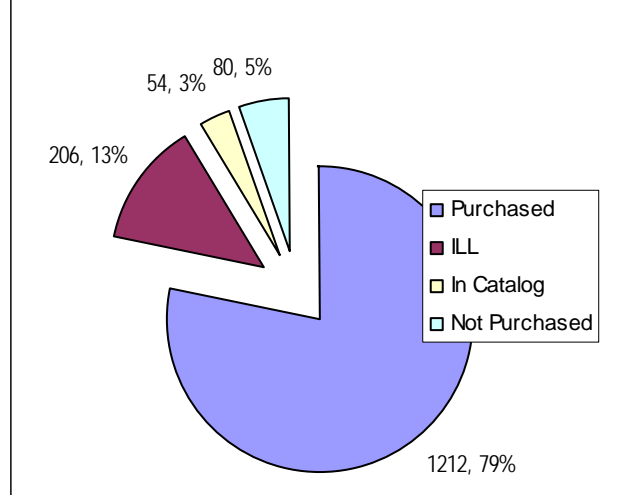
Number of Adult Requests by Year



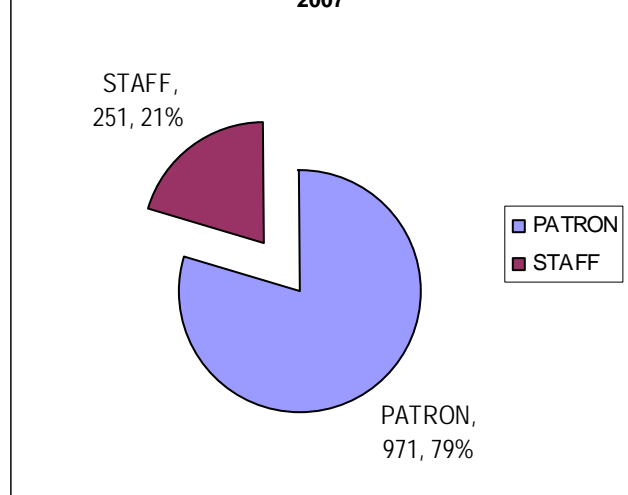
Number of Requests Received by Format and Genre



What Happened to My Request



HOW ARE REQUESTS GENERATED?
2007



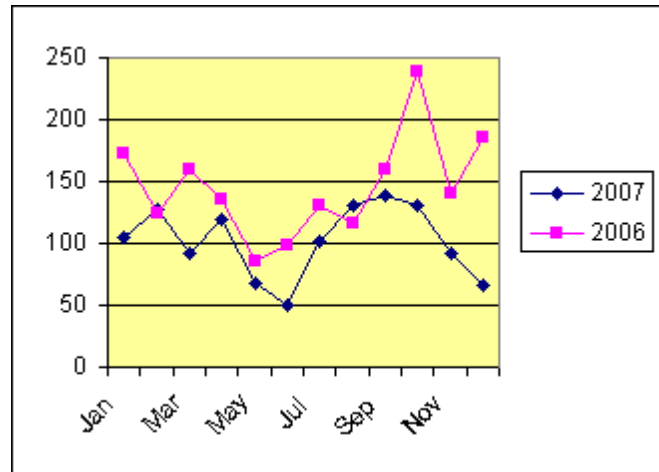
Logan Library Performance Measure

Request Statistics for Children's Collection 2007

(requests to purchase new materials for the Children's book and audio-visual collections)
compared with statistics from 2006

Number of requests by month:

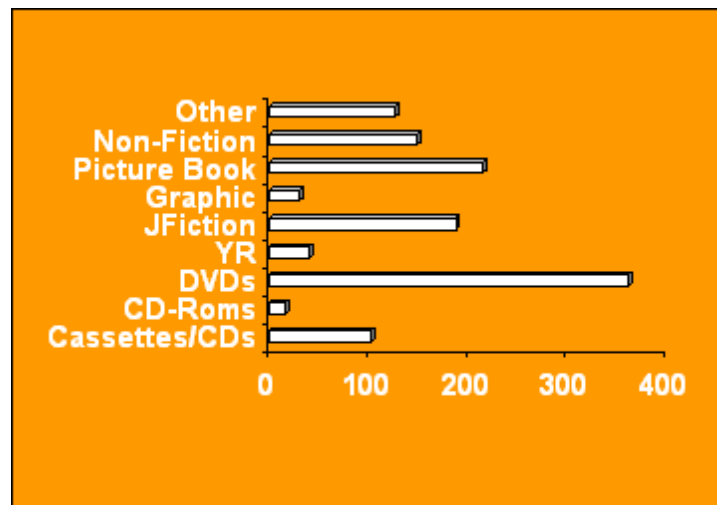
2007		2006	
Jan	105	Jan	172
Feb	128	Feb	124
Mar	92	Mar	159
Apr	119	Apr	135
May	67	May	85
Jun	50	Jun	98
Jul	102	Jul	131
Aug	131	Aug	116
Sep	138	Sep	159
Oct	130	Oct	238
Nov	92	Nov	141
Dec	66	Dec	185



Requests Jan-Dec 2007: **1220**
Requests Jan-Dec 2006: **1743**

Requests by type of material:

Cassettes/CDs	101
CD-Roms	16
DVDs	360
YR	39
JFiction	187
Graphic	
Novels	30
Picture Book	214
Non-Fiction	148
Other	125
(holiday, board books, non-English)	
Total	1220



Note: Requests for children's materials were down by 523 (30%) from the 2006 totals. In 2007, we discontinued automatically placing holds for patrons on items they had requested. This resulted in a substantial drop in the number of requests.

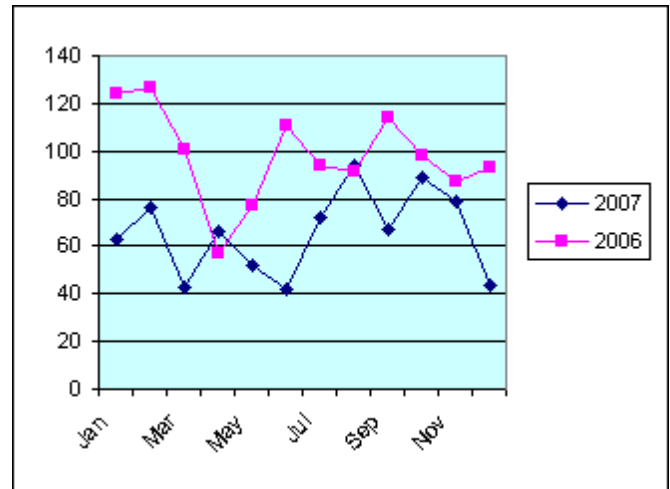
**Logan Library
Performance Measure**

Request Statistics for YA Collection 2007

(requests to purchase new materials for the YA book and audio-visual collections)
compared with statistics from 2006

Number of requests by month:

2007		2006	
Jan	63	Jan	124
Feb	76	Feb	127
Mar	43	Mar	101
Apr	66	Apr	57
May	52	May	77
Jun	42	Jun	111
Jul	72	Jul	94
Aug	94	Aug	91
Sep	67	Sep	114
Oct	89	Oct	98
Nov	79	Nov	87
Dec	44	Dec	93

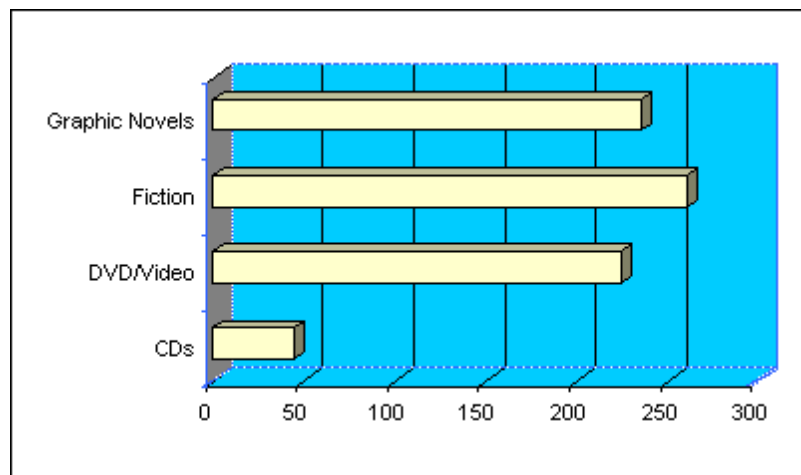


2007 requests, January - December
2006 requests, January - December

787
1174

Requests by type of material:

CDs	44
DVD/Video	224
Fiction	260
Graphic Novels	235
Other	24
Total	787



Note: Requests for YA materials were down by 387 (33%) from the 2006 totals. In 2007, we discontinued automatically placing holds for patrons on items they had requested. This resulted in a substantial drop in the number of requests.

Logan Library Performance Measure

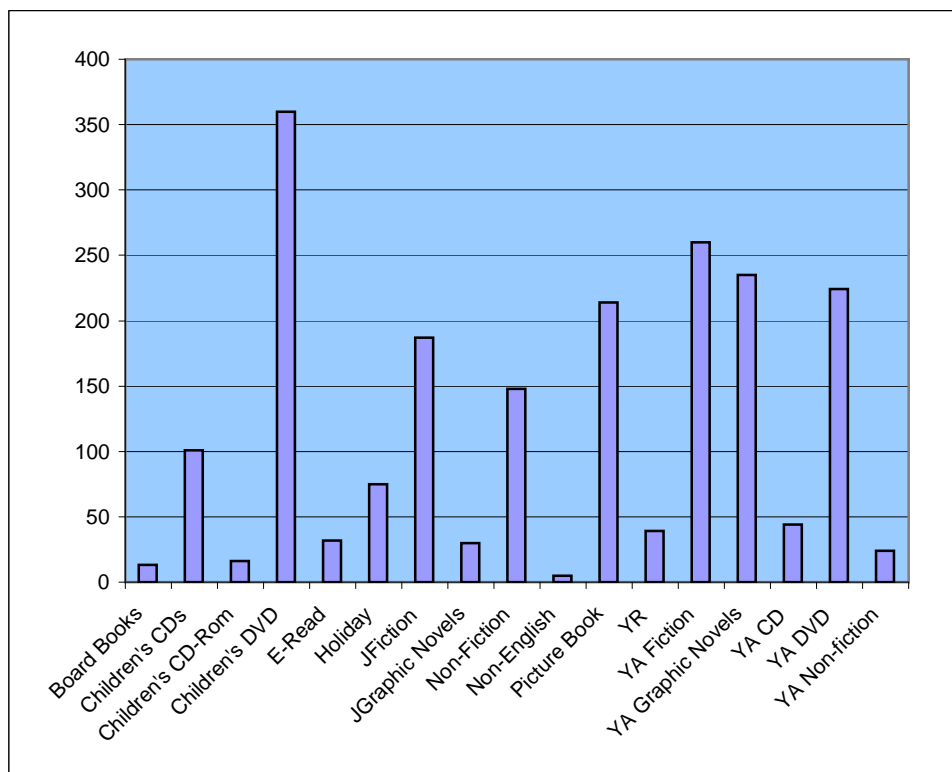
Children's/Teen Requests 2007

By type of material requested

Board Books	13
Children's CDs	101
Children's CD-Rom	16
Children's DVD	360
E-Read	32
Holiday	75
JFiction	187
JGraphic Novels	30
Non-Fiction	148
Non-English	5
Picture Book	214
YR	39
YA Fiction	260
YA Graphic Novels	235
YA CD	44
YA DVD	224
YA Non-fiction	24

Subtotal: 2007

We also had **211** requests for graphic novels for the adult collection.



Grand total of requests for 2007: 2218 (2006 total: 3042)

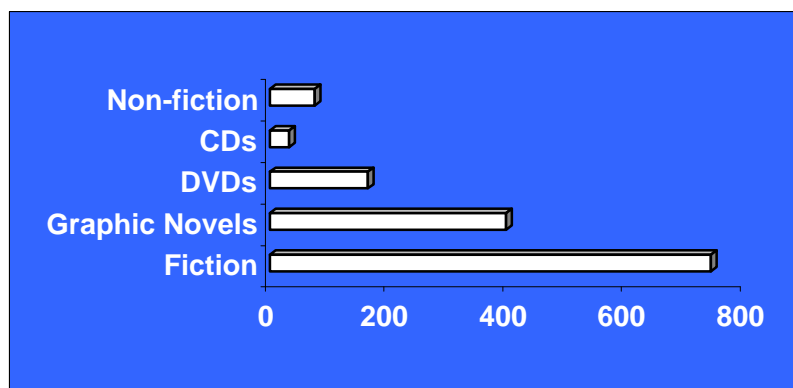
Total requests were down by 824 (27%) from the 2006 total. In 2007, we discontinued automatically placing holds for patrons on items they had requested. The number of requests dropped substantially as a result.

Logan Library Performance Measure

Materials Purchased for the YA Collection, January-December 2007

Fiction	743
Graphic Novels	398
DVDs	165
CDs	33
Non-fiction	76

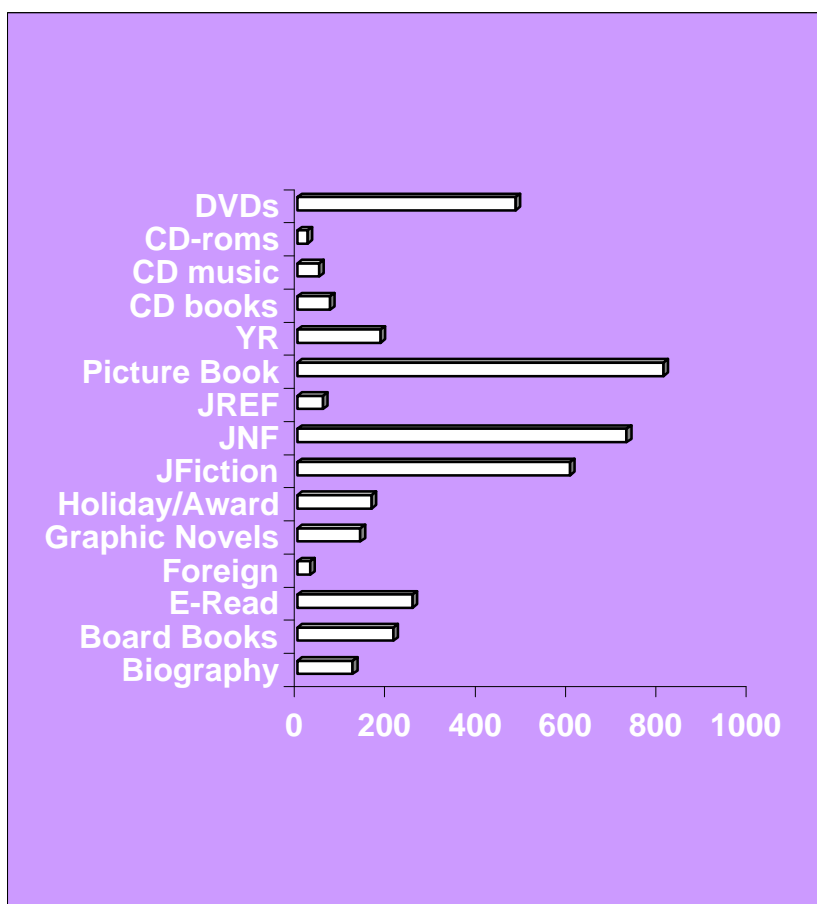
Total items purchased: 1415
(2006 total: 1358)



Materials Purchased for the Children's Collection, January-December 2007

Biography	122
Board Books	212
E-Read	255
Foreign Language	28
Graphic Novels	139
Holiday/Award	164
JFiction	603
JNF	728
JREF	56
Picture Book	809
YR	184
CD books	72
CD music	47
CD-roms	22
DVDs	482

Total items purchased: 3923
(2006 total: 4611)



Total for both collections: 5338 (2006 total: 5969)

Includes items purchased with grants and donations

Logan Library Performance Measure

Everton Genealogy Collection Report - 2007

Statistics:

Volunteers

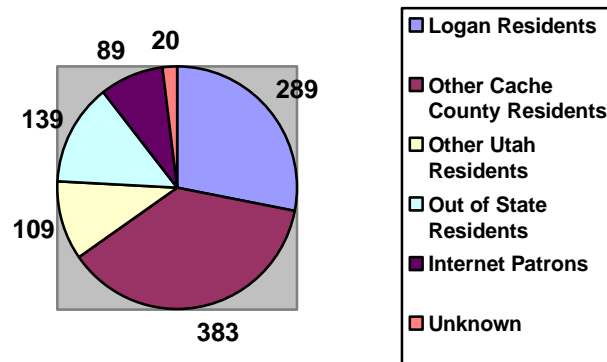
- 842.25 total volunteer hours during 2007

Library Hours

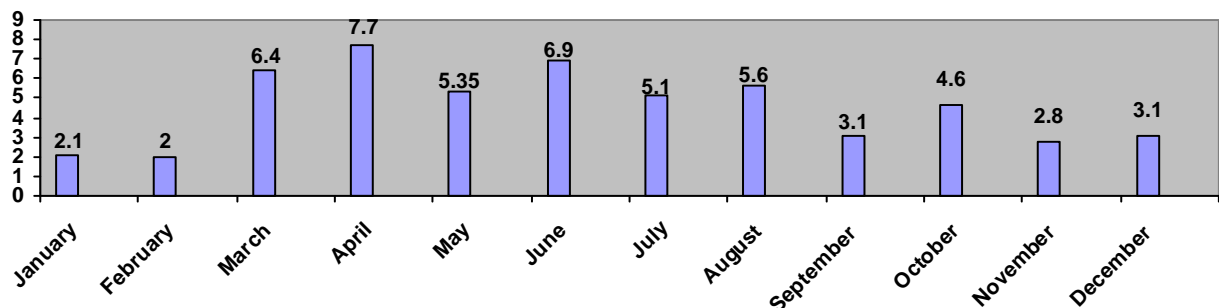
- Collection was open 211 days during 2007

Patrons

- Collection received 956 patrons
- 2007 average of 4.5 patrons each day.



Graph 1
2007 Statistics
Graph 2
Average Number of Patrons Each
Day in 2007



Major Projects or 2007

- The entire collection was shelf read and compared to a list totaling nearly 1,500 pages of items.
- A monthly Everton Collection Newsletter was begun and it gained over 150 subscribers. The newsletter has now been replaced with the Everton News page on the new Logan Library Web site.
- A large project to reclassify the family history books began and continues. New call numbers, security, and other library stamps and labels are being added. Currently, over 3,000 items have security placed in them.
- The Everton Title Database continues to be the major access way for patrons to search the book titles in the collection. The database is updated on a daily basis, and over two-thousand titles have been added to the Title Database over the past year.
- Several hundred titles have been discarded from the collection. Many of these are currently being listed to be sold on internet auctions. Nearly \$1,400 in online sales has already been made.
- The Everton Serials Database was begun and the effort continues. This database was created to give patrons a search tool to access the thousands of serial titles in the Everton Collection. Currently, the family serials are ¾'s of the way completed.
- Several new Everton Collection marketing publications were completed. A new tri-fold brochure which has been sent to all the neighboring libraries in the state was among these new publications.
- A new Everton Collection web site was launched in October.
- In October, the collection celebrated its first year open to the public with an open house.

Logan Library Performance Measure

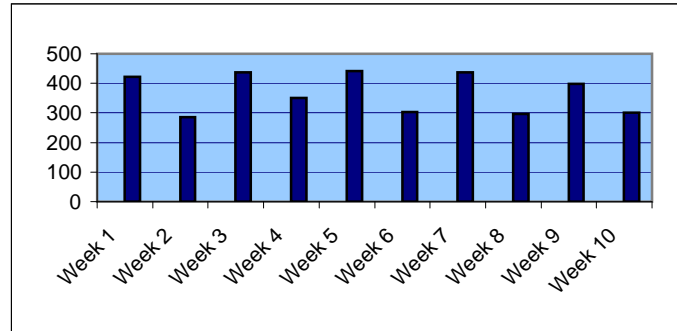
Summer Reading Program 2007 - Statistics

Enrollment: 1874 children

Last year's enrollment: 1952

Number of Reading Records turned in:

Week 1	422
Week 2	285
Week 3	438
Week 4	350
Week 5	441
Week 6	304
Week 7	438
Week 8	296
Week 9	398
Week 10	301
After Week 10	17



Total: 3690

Average of 369/week

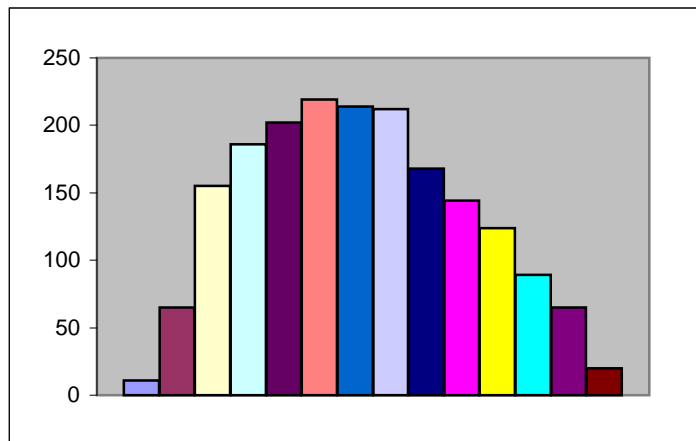
This represents 1,033,200 minutes of reading time, equaling 17220 hours or 717.5 24-hour days

(Last year: 3155 in 10 weeks - average of 315/week, 883,400 minutes or 614 days total)

Number of those enrolled who turned in at least one reading record: 1284 (69%)

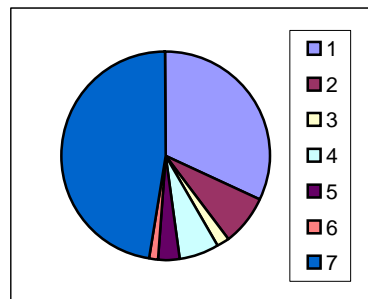
Breakdown by age:

0	11
1	65
2	155
3	186
4	202
5	219
6	214
7	212
8	168
9	144
10	124
11	89
12	65
no age given	20



Schools Attended:

1. Preschool-age children	598
2. County Schools	146
3. Home School	35
4. Private or Charter Schools	117
5. Edith Bowen	64
6. Summer Visitors	25
7. Logan City Schools	889



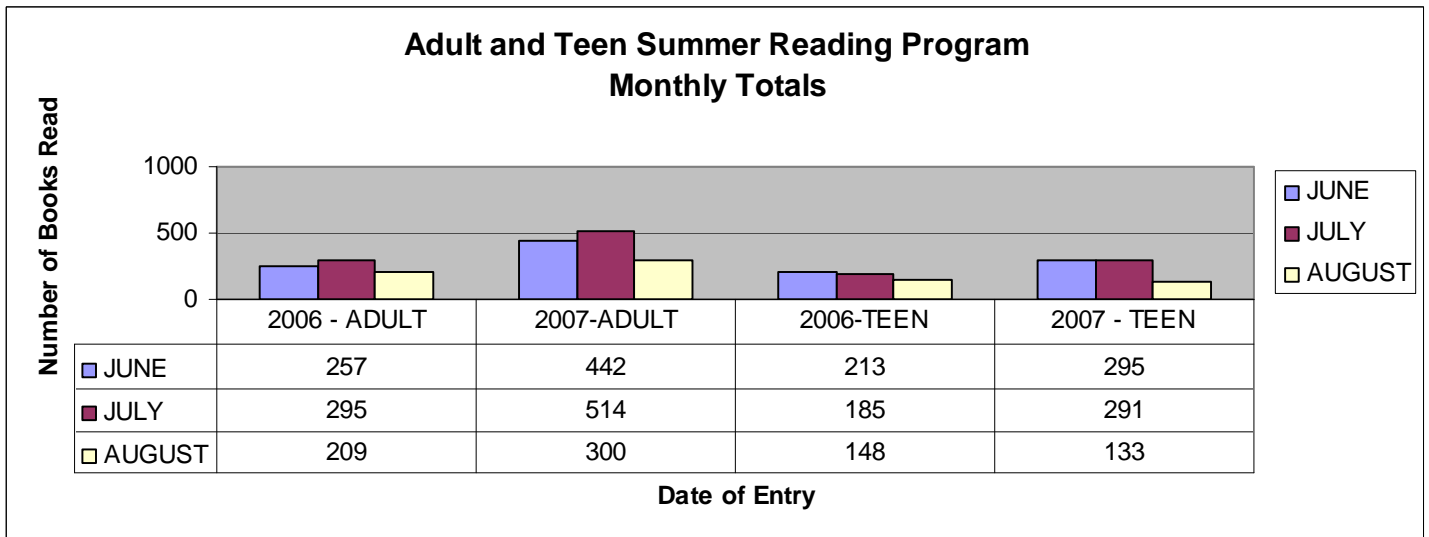
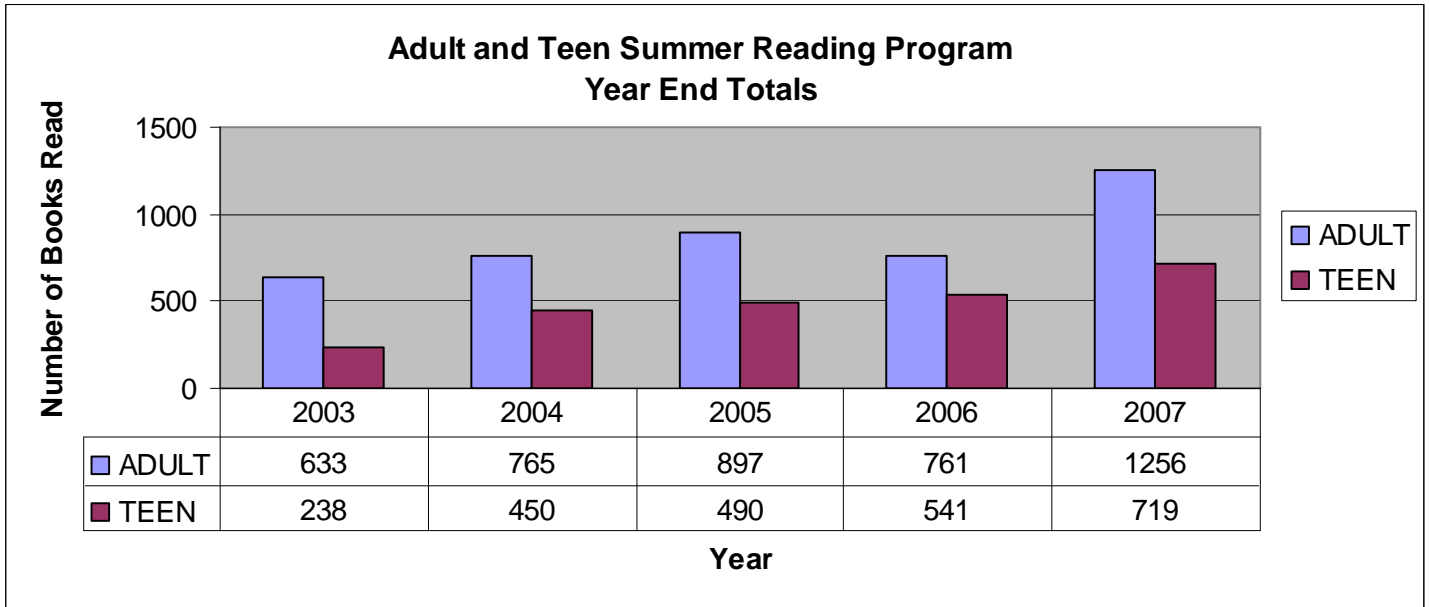
Logan City Schools:

Adams	116
Bridger	83
Ellis	127
Hillcrest	153
Wilson	162
Woodruff	113
MLMS	135

Summary:

Enrollment in the Summer Reading Program this year was down by approximately 5 percent. However, those who participated were more active in the program than in the past, turning in 535 more reading cards than in the previous year and 253 more than in 2005, when we had over 2200 children enrolled.

ADULT AND TEEN SUMMER READING PROGRAM SUMMER 2007



LOGAN LIBRARY BOARD 2007

Chair
Susan Jaggi
Dixie Poole
Susan Kadlec
Blythe Ahlstrom
Mary Anderson
Karren Pyfer
Herm Olsen

LOGAN LIBRARY STAFF

Director Ronald Jenkins

Senior Librarian Janet Fiesinger

Librarians
Karen Clark
Kara Huggard
Melanie Liechty
Patricia Record
Becky Smith

Associate Librarians
Jason Cornelius
Michelle Olsen
Debbie Ogilvie

Library Technical Assistants

Ann Calvert	Bron Logan
Lindsey Cannon	Jodie Miller
Kelsie Congdon	Julie Miller
Katrina Farrow	Laura Nelson
Allison Gonzalez	Sarah Pincock
Katie Jaggi	Barbara Price
Marie Kangas	Stefanie Rieben

Library Pages
Anna Baker
Shari Lundstrom
Rachel Anderson



255 North Main, Logan, Utah 84321 (435) 716-9123

Hours: Mon. - Thurs.: 10:00 a.m. - 9:00 p.m.

Fri. - Sat.: 10:00 a.m. - 6:00 p.m.

<http://library.loganutah.org>