

THE LOGAN LIBRARY ANNUAL REPORT 1999

1

INTRODUCTION:

The theme that the library uses, "A Bridge to the Past, A Highway to the Future" illustrates what has happened, is happening, and will continue to happen in the library. Through the resources that the library develops, collects, and maintains citizens are able to retrieve informational, educational, and recreational resources that remind them and instruct them concerning the past and its impact on the present. The library resources also provide direct access to current relevant information that is needed in today's world. In addition, the library is actively building the informational "highway" needed to access and provide resources that will be used in the future.

OVERALL USAGE OF THE LIBRARY

During 1999 the overall usage of library resources, access points, and facilities continued to climb. Total circulation of materials exceeded six hundred thousand items for the first time in the history of the library. While the number of library card holders increased by 712 new patrons overall, the circulation during the same time period increased by 35,938 items over the previous year. Reference questions answered remained at about the same rate but the librarians have noted an increased level of difficulty in questions asked and in expectations of patrons for full text resources to answer questions. The usage of the library by minors has continued with notable increases in circulation of materials for this age group. Library sponsored programs for children remains a high demand service.

TECHNOLOGY IN THE LIBRARY

The library is actively engaged in developing and enhancing electronic resources and access points in order to provide the public the ability to locate and use the resources now available in a variety of formats and locations. Development of the library home page has continued during 1999. The library's home page now provides hundreds of pages of information of particular interest to local residents as well as others seeking to learn more about Logan and the surrounding area. The library also enhanced its "Directory to the Internet" making it possible for the public to easily find and access hundreds of quality internet sites by subject. The library has also been working to provide direct patron access to the on line catalogs of other libraries throughout the State of Utah and the nation. This service is currently available through the library's home page on a limited basis.

For over two years the library has been preparing to upgrade its automated library management system. This project has been called the "Road to Taos". "Taos" is the name of the planned library management system. The preparation for this migration to a new system was completed during 1999 and the actual migration will occur during 2000.

THE LOGAN LIBRARY ANNUAL REPORT 1999

2

The end result of this migration will be a fully integrated NT based library management system capable of managing the internal and external informational, educational, and recreational resources of the library. The current Inlex library management system has served the library well since 1985 and it is expected that the new Taos product will continue to provide quality service well into the future.

LIBRARY AGREEMENTS

The library continues to be interested in and works toward forming partnerships and agreements that enhance access to resources for the Citizens of Logan. With this concept in mind the library signed an inter local agreement with Weber County Library system. This agreement allows Logan Library card holders the opportunity to apply for and receive a library card at the Weber County Library and to use their resources without an additional fee. Weber County residents in turn may likewise use the resources of the Logan Library.

The library board also recommended, during 1999, the sale of library cards to non-residents of the City of Logan. With the support of the City Administration and Council the library implemented the sale of library cards in October. There was much discussion prior to approving the sale of library cards. This discussion did not cease when the sale of cards was approved. The library board will continue to review and evaluate this issue and will make recommendations as needed in the future.

The library continues to participate in the Utah State Public Library network. This participation allows the library to provide the public direct access to the "Pioneer" databases that are provided at the state level including full text periodical databases, newspapers, encyclopedias, and a variety of other electronic resources.

FUTURE DIRECTIONS

The increasing usage of and demand for the library's collections, access points, and facilities during 1999 illustrates the need to continue to provide quality services and materials to the public. The library is committed to providing "A Bridge to the Past, a Highway to the Future" that will enhance each individual citizen as well as improve the overall quality of life in the City of Logan.

THE LOGAN LIBRARY ANNUAL REPORT 1999

LIBRARY USAGE INDICATORS STATISTICAL BREAKDOWN

1. Library Sponsored Programs: 184

Attendance: 4,986

BREAKDOWN:

	Times Held	Attendance
Special Story times	31	722
Preschool Story time	153	4,200

OTHER PROGRAMS:

(Not included in attendance figures)

Summer Reading Program: 2,076

2. Scheduled Public Meetings: 813

Attendance Unknown

3. Items Circulated: 600,250

1995	489,710
1996	527,637
1997	552,312
1998	564,312
1999	600,250

Per cent of change over previous year 9%

4. Interlibrary Loans

Interlibrary Loan Requests Processed:	4,310
Patron requests from our patrons:	1,748
Patron requests unfilled:	221
Requests from other libraries:	2,562
Requests filled for other libraries:	1,385
Per cent of change over previous year:	15%

5. Population served: 43,000 (1999 Utah Data Guide)

Total Number of Library Cards issued: 25,350

6. Volunteer Hours: 543.5

7. Patron Exit Count: 223,507

Per cent of change over previous year: (.02%)

THE LOGAN LIBRARY ANNUAL REPORT 1999

RESOURCES:

1. Catalogued items: 138,167
2. Serials: 175
Purchased Current Subscriptions: 157
Donated Current Subscriptions: 18
3. Newspapers: 16
Purchased Current Subscriptions: 13
Donated Current Subscriptions: 3

ACQUISITIONS: 1999:

1. New Items Purchased: 10,480
Source: Local funds, State and Federal grants
2. Donated Items: 1,547
Source: Private contributions
3. TOTAL: 12,027
Per cent of change over previous year: 11%

THE LOGAN LIBRARY ANNUAL REPORT 1999

5

LIBRARY USAGE INDICATORS:

1. **Collection Analysis**
2. **Average Circulation per volume Analysis**
3. **Patron Analysis**
4. **Circulation by Library Card Holder Analysis**
5. **Holds Analysis**
6. **Fine Activity**
7. **Reference Analysis**
8. **Interlibrary Loan Analysis**
9. **Children's Summer Reading Program Summary**

THE LOGAN LIBRARY ANNUAL REPORT 1999

6

COLLECTION ANALYSIS BREAKDOWN BY COLLECTION CATEGORY:

THREE YEAR COMPARISON:	1997	1998	1999
Archives	1,363	1,275	1,349
Art Print	29	1	0
Atlas	54	54	60
Biography	4,439	4,406	4,595
Board Books	1,045	1,329	1,359
Bk/Cass	537	545	496
BSA Booklets	364	344	293
Ca/Ad/Bk	1,374	1,436	1,727
Ca/Ad/Music	351	339	323
Ca/Ad/Nf	329	303	410
Ca/J/Bk	422	404	530
Ca/J/Mus	246	231	213
Ca/J/St	139	125	161
Ca/Y/Bk	-	156	196
CD/Ad/Music	599	617	784
CD/Ad/Nf	5	5	13
CD/J/BK	-	-	2
CD/J/Mus	-	-	348
CD/J/St	-	-	8
CD-ROM/Adult	378	286	326
CD-ROM/Juv	-	267	337
Consumer	64	64	59
Easy Read (Graded Readers)	1,648	1,601	1,682
Fiction (FIC)	13,462	14,207	14,934
Fantasy Science Fiction	7,127	7,573	7,933
HLAV	323	369	363
HLBk	2,203	2,366	2,601
Index	72	74	78
Juvenile Biography	1,263	1,280	1,295
Juvenile Fiction	8,819	8,892	9,575
Juvenile Nonfiction	2,590	2,602	2,573
Juvenile Story Collection	344	351	351
LDS Collection	2,882	2,915	3,019
Lit Fict	138	138	138
Lit Nonfict	43	43	43
LP/AD/FIC	616	683	729
LP/AD/NON-FIC	135	143	178
LP/JUV/FIC	57	57	58
LP/JUV/NON-FIC	1	1	1
Map	27	27	27
Mys (Mystery)	4,648	4,967	5,252
Nonfiction	44,028	45,274	47,352
PI (Picture Books)	7,538	7,771	8,175
Ref Desk	49	49	51
Reference	3,052	2,949	3,162
Serials (Bound)	1,093	1,123	1,142
Spa/Ad/Fic	168	164	160
Spa/AV	98	143	170
Spa/J/Fic	201	263	257
Spa/Nfic	420	421	430
Staff	178	175	173
Utah Reference	214	226	253
VidAdEnt	648	779	1,111
VidAdEduc	1,769	1,940	2,178
VidJEnt	1,593	1,962	2,263
VidJEduc	484	545	569
Young Adult	4,336	4,461	4,684
Young Reader	1,217	1,337	1,467

THE LOGAN LIBRARY ANNUAL REPORT 1999

7

AVERAGE CIRCULATION PER VOLUME ANALYSIS:

Collection Category	Volumes in Collection	Circulation 1999	Ave. Circ. per Volume
Biography	4,595	5,096	1.10
Board Books	1,359	25,238	18.57
Bk/Cass	496	8,233	16.59
BSA Booklets	293	685	2.33
Ca/Ad/Bk	1,727	21,655	12.53
Ca/Ad/Music	332	1,693	5.09
Ca/Ad/Nf	410	3,354	8.18
Ca/J/Bk	530	4,558	8.60
Ca/J/Mus	213	1,427	6.69
Ca/J/St	161	763	4.73
Ca/Y/Bk	196	1,061	5.41
CD/Ad/Music	784	9,285	11.84
CD/Ad/NonFic	13	83	6.38
CD/J/BK	1	4	4.00
CD/J/Mus	348	3,764	10.81
CD/J/S	8	67	8.37
CD-ROM/Adult	326	2,529	7.75
CD-ROM/Juv	337	8,937	26.51
Easy Read	1,682	18,416	10.94
Fiction	14,934	50,978	3.41
Fantasy Science Fiction	7,933	20,469	2.58
HlAv	363	3,888	10.71
HLBk	2,601	7,682	2.95
Juvenile Biography	1,295	1,640	1.26
Juvenile Fiction	9,575	27,371	2.85
Juvenile Nonfiction	2,573	14,131	5.49
Juvenile SC	351	675	1.92
LDS Collection	3,019	15,289	5.06
Lit Fict	138	29	0.21
Lit Nonfic	43	8	0.18
LP/AD/Fic	729	2,453	3.36
LP/AD/Non-Fic	178	285	1.60
LP/Juv/Fic	58	48	0.82
LP/Juv/Non-Fic	1	1	1.00
Mysteries	5,252	17,998	3.42
Nonfiction	47,352	107,604	2.27
Picture Books	8,175	62,331	7.62
Spa/Ad/Fic	160	251	1.56
Spa/AV	170	2,947	17.33
Spa/J/Fic	257	1,359	5.28
Spa/Nfic	430	1,101	2.56
Staff	173	1	.005
VidAdEnt	1,111	33,920	30.53
VidAdEduc	2,178	18,139	8.32
VidJEnt	2,263	65,404	28.90
VidJEduc	569	7,372	12.95
Young Adult	4,684	9,087	1.94
Y Read	1,467	7,187	4.89
TOTALS:	131,486	600,250	4.56

THE LOGAN LIBRARY ANNUAL REPORT 1999

PATRON ANALYSIS

BREAKDOWN OF REGISTERED CARD HOLDERS

	1995	1996	1997	1998	1999
Logan	22,031	22,922	24,207	24,638	25,350

New Cards registered during 1999: 3,976

Old Cards deleted during 1999: 3,277

Active cards modified during 1999: 16,228

CIRCULATION BY LIBRARY CARD HOLDER:

Year	Card Holders	Circulation	Average Circulation per card
1995	22,031	489,710	22.28
1996	22,922	527,637	23.02
1997	24,207	552,312	22.82
1998	24,638	564,312	22.90
1999	25,350	600,250	23.67

HOLD ANALYSIS

Requested	Filled	Canceled	Waiting
24,062	19,710	971	3,381

FINE ACTIVITY

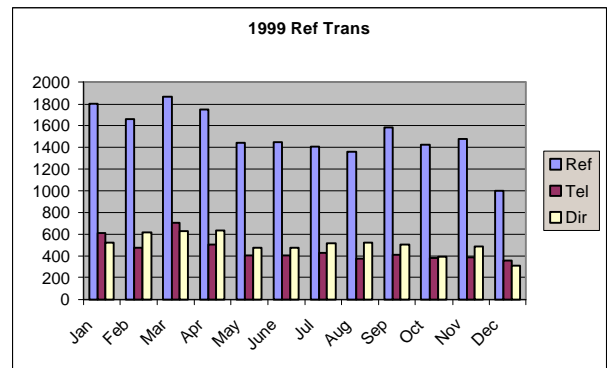
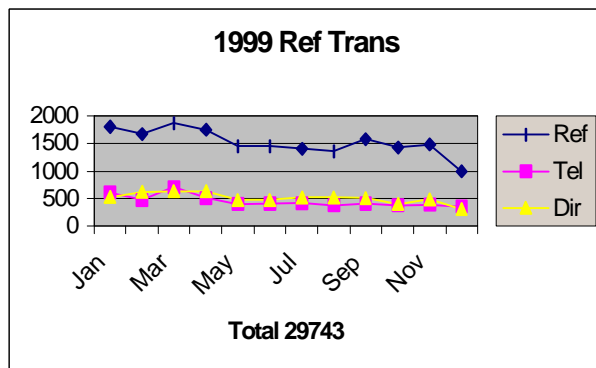
Fines:		Misc.:	
Number	Amount	Number	Amount
76,000	\$25,057.32	404	\$4,904.77
32.0 cents average per transaction		\$12.14 average per transaction	

THE LOGAN LIBRARY ANNUAL REPORT 1999

REFERENCE ANALYSIS

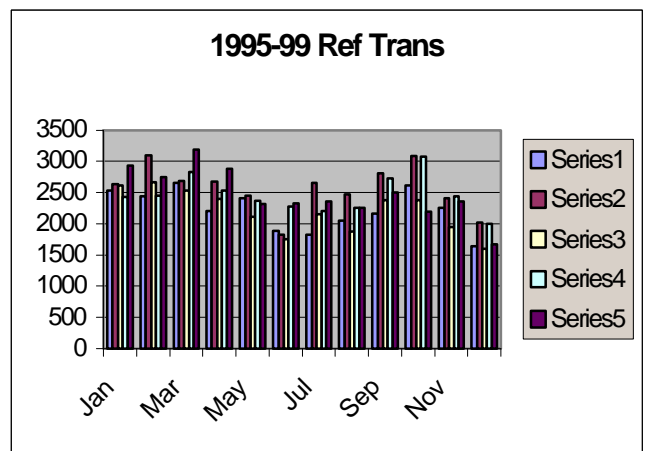
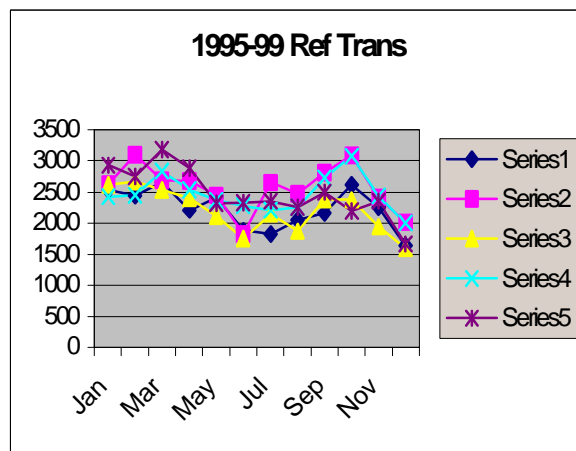
1999 Reference Transactions

	Jan	Feb	Mar	Apr	May	June	Jul	Aug	Sep	Oct	Nov	Dec	Total
Ref	1801	1663	1866	1746	1444	1446	1407	1357	1581	1422	1478	996	18207
Tel	609	471	707	504	403	405	425	377	412	378	390	356	5437
Dir	526	620	626	635	474	480	517	524	505	394	487	311	6099
Total	2936	2754	3199	2885	2321	2332	2349	2258	2498	2194	2355	1663	29743



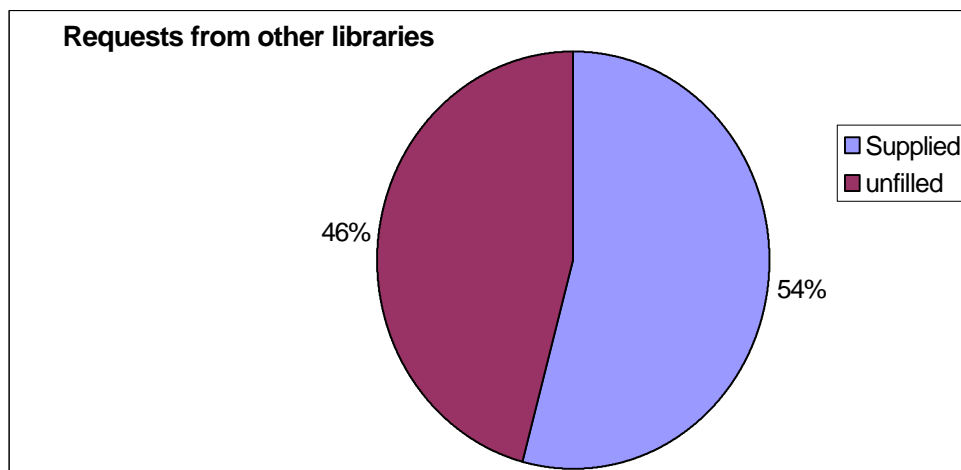
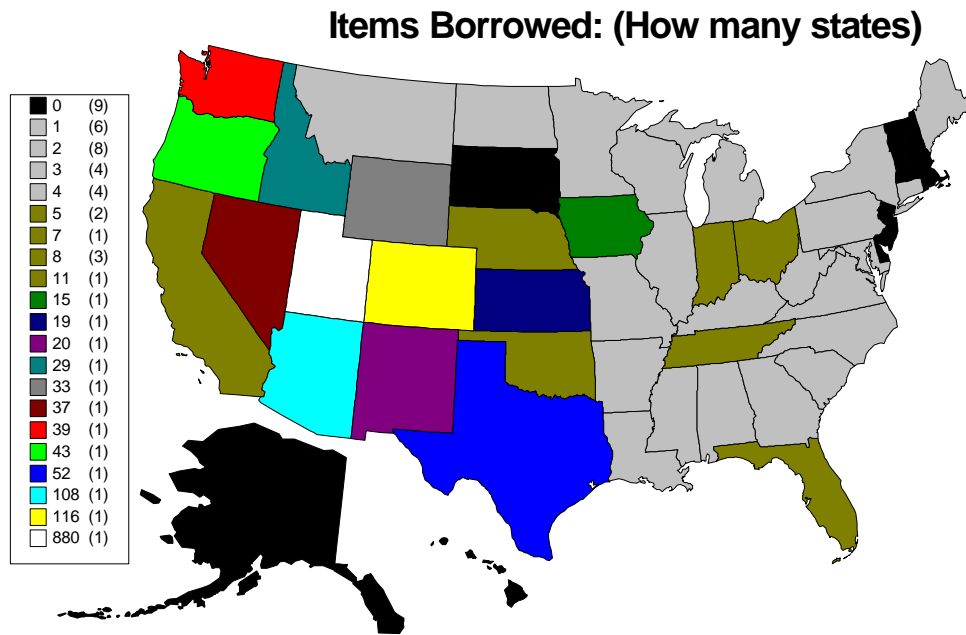
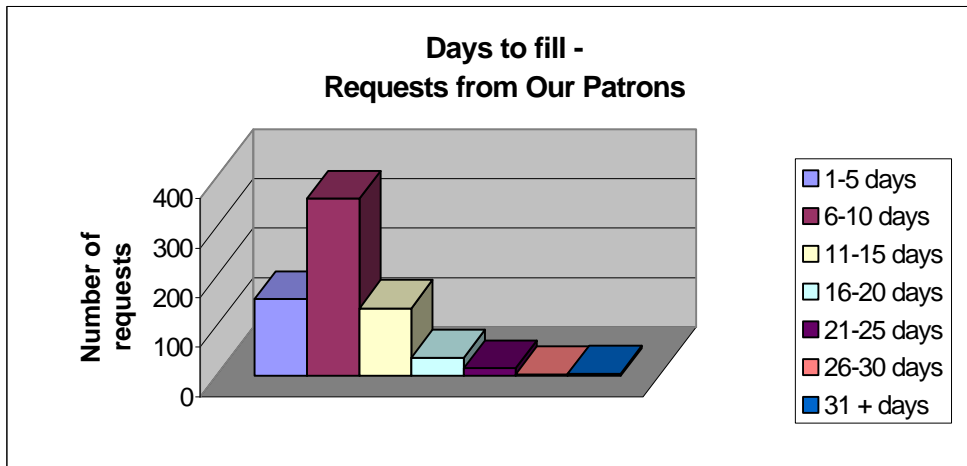
Reference Statistics 1995 to 1999

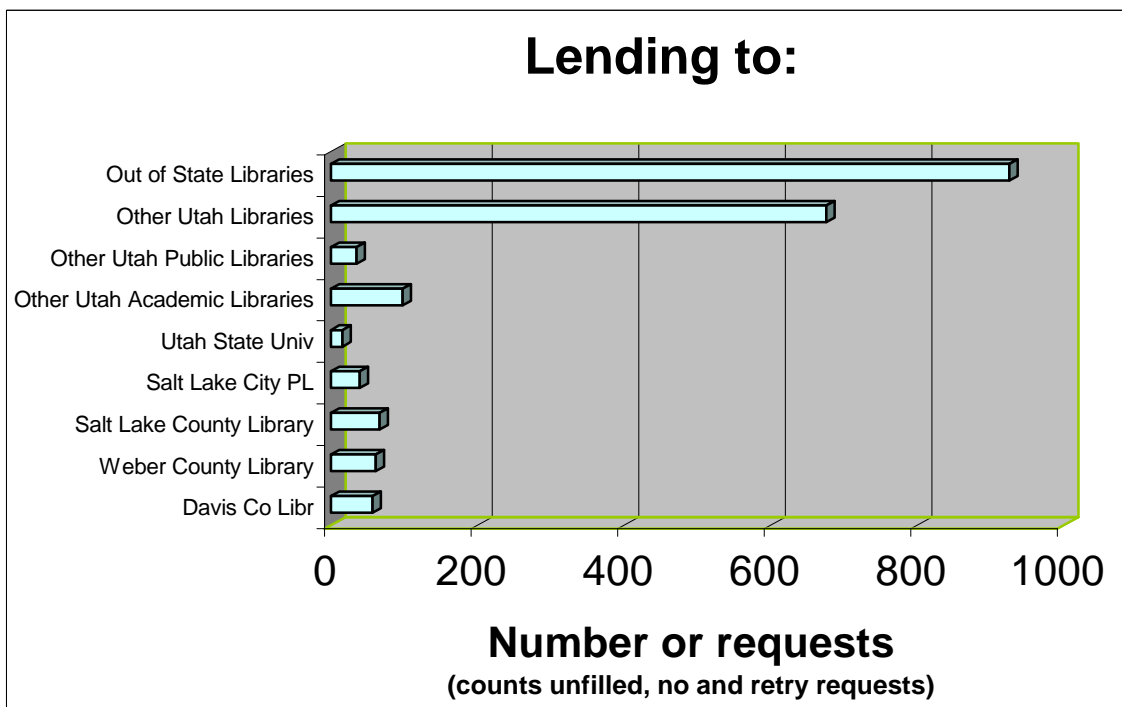
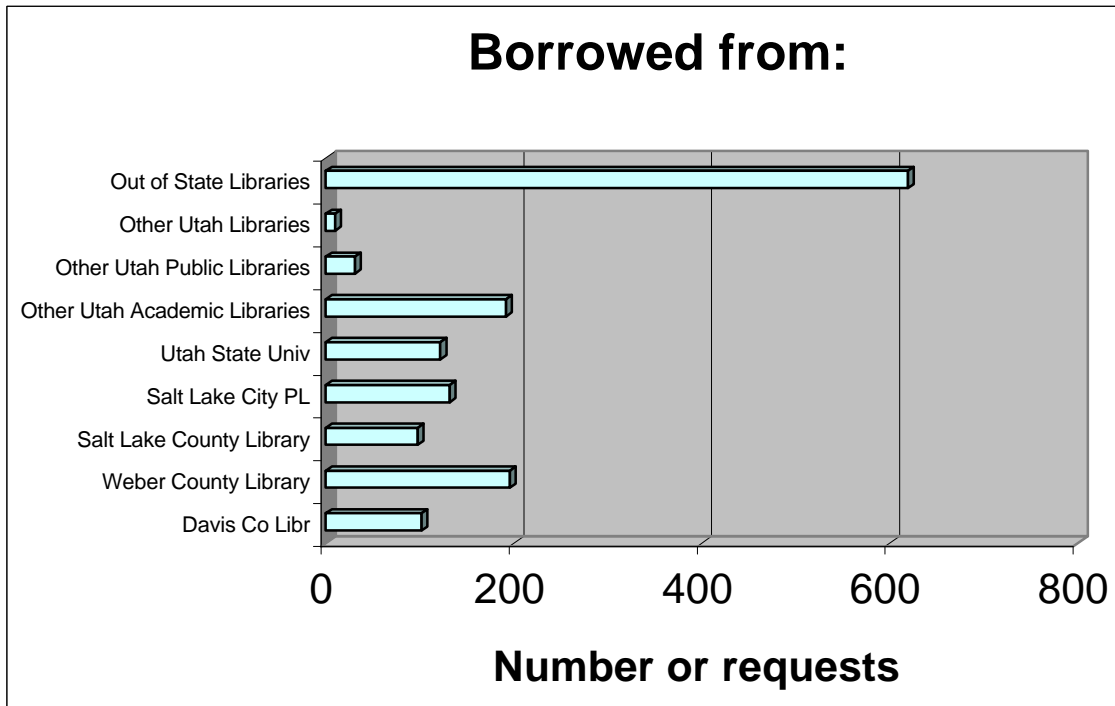
	Jan	Feb	Mar	Apr	May	Jun	Jul	Aug	Sep	Oct	Nov	Dec	Total
1995	2536	2441	2661	2211	2415	1883	1827	2049	2159	2623	2255	1647	26707
1996	2637	3097	2695	2679	2448	1817	2660	2477	2815	3085	2411	2014	30835
1997	2624	2671	2536	2406	2108	1746	2153	1866	2374	2379	1939	1588	26390
1998	2420	2456	2840	2533	2371	2287	2214	2262	2723	3074	2441	2002	29623
1999	2936	2754	3199	2885	2321	2331	2349	2258	2498	2194	2355	1663	29743



THE LOGAN LIBRARY ANNUAL REPORT 1999

INTERLIBRARY LOAN ANALYSIS





THE LOGAN LIBRARY ANNUAL REPORT 1999

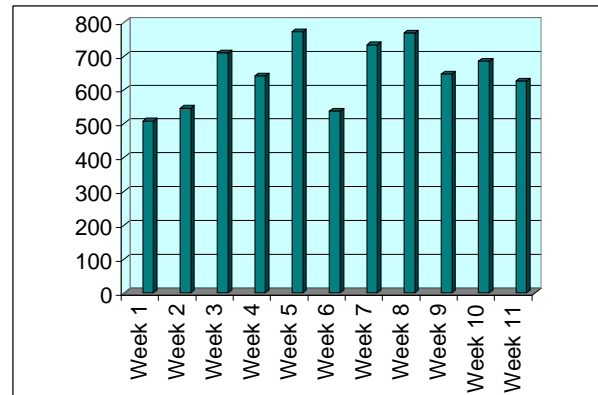
SUMMER READING PROGRAM 1999 - STATISTICS

Enrollment: 2076

Last year's enrollment: 1834 (This year saw an 11% increase in the number of participants.)

Number of Reading Records turned in:

Week 1	508
Week 2	546
Week 3	710
Week 4	642
Week 5	771
Week 6	538
Week 7	733
Week 8	768
Week 9	648
Week 10	685
Week 11	626



Total: 7175

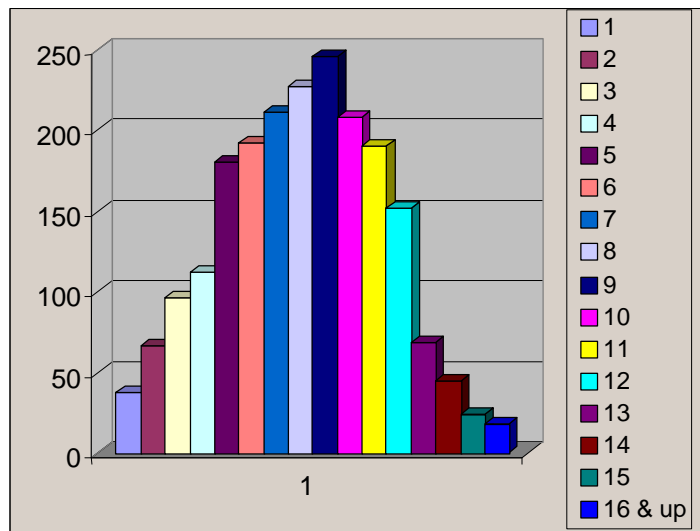
Average of 652/week (up from 556/week last year)

This represents at least 502,250 minutes of reading time, or 348 24-hour days.

Number of participants who turned in at least one reading record: 1851 (90%)

Breakdown by age:

1	38
2	67
3	96
4	112
5	180
6	192
7	211
8	227
9	246
10	208
11	190
12	152
13	69
14	45
15	24
16 & up	18



Schools Attended:

1. Preschoolers	308
2. County Schools	94
3. Home or Private Schools	156
4. Edith Bowen	210
5. Summer Visitors	26
6. Logan City Schools	1270
7. Other	14

